

U.S. PUBLIC LAND SURVEY MONUMENT RECORD - GRANT COUNTY, WI

Section 24, Town 7 North Range 1 West, Town of Castle Rock (a)

NOTE: This form is intended and designed to fulfill all requirements of the Wisconsin Administrative Code Chapter A-E 7.08, U.S. Public Land Survey Monument Record (3) (a) (b) (c) (d) (e) (f) (g) (h) (i).

CERTIFICATE: (i)

I, Aaron J. Austin, Wisconsin Professional Land Surveyor, do hereby certify that the corner location on this record was determined by me and/or under my direct supervision and that this U.S. Public Land Survey Monument Record is correct and complete to the best of my knowledge and belief.

Dated this 20th day of July, 2021.

Aaron J. Austin
Aaron J. Austin, S-2922



⊕ = CORNER LOCATION

Grant County Coordinates:
NAD 83 (2011)
Northing: 606,611.87
Easting: 888,787.64

HISTORY OF CORNER ESTABLISHMENT:

Original corner was set in 1833 by Sylvester Sibley.
Greg Jewell found a 1" Rebar and prepared a Survey Monument Record in 1993.

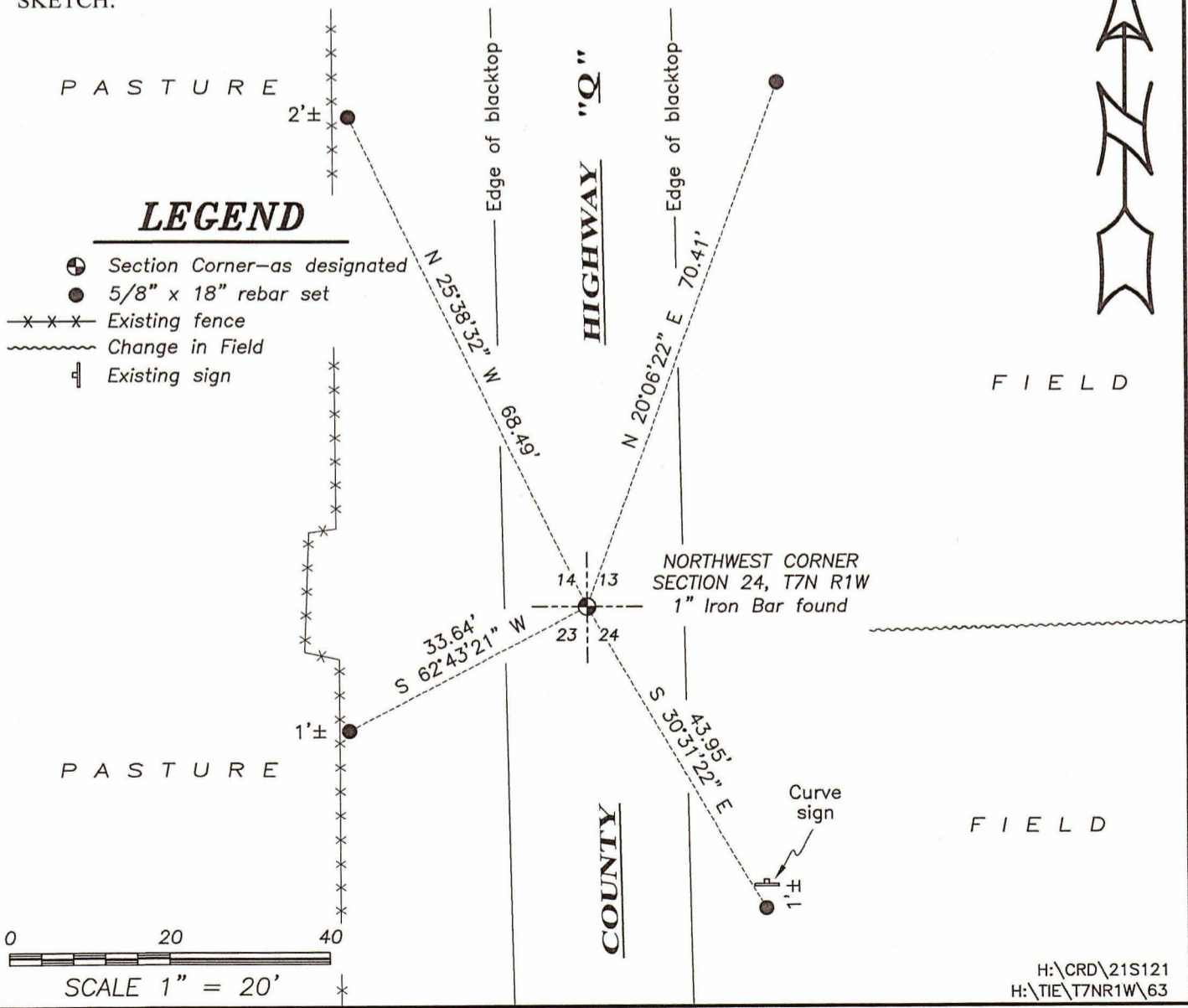
DESCRIPTION OF CORNER EVIDENCE FOUND: (b) (f) (g) (h)

I found the 1" Iron Bar in Jewell's location of the Corner. I set four witness corners after I verified the Monument's location with G.P.S. and E.D.M. methods.

DESCRIPTION OF CORNER AND WITNESS MONUMENTS, references and accessories used to perpetuate the original or re-established location of this corner. (c) (d) (e)

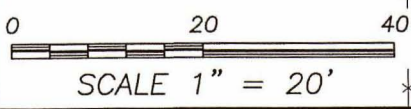
Witnesses to corner location Shane Austin.
Drawn by Owen Austin

SKETCH:



LEGEND

- ⊕ Section Corner—as designated
- 5/8" x 18" rebar set
- x-x-x- Existing fence
- ~~~~~ Change in Field
- ⊥ Existing sign

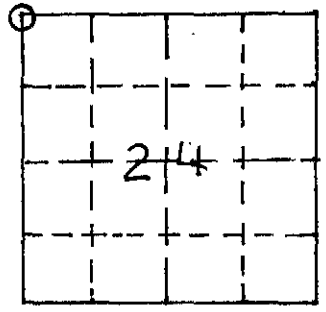


NOV 26 1993

U. S. PUBLIC LAND SURVEY MONUMENT RECORD

INSTRUCTIONS: This record shall show the location of the corner and shall include all the following nine elements (a through i).

- (a) Identify the corner by reference to the U.S. public land survey system.
 ○ = Corner monument restored.

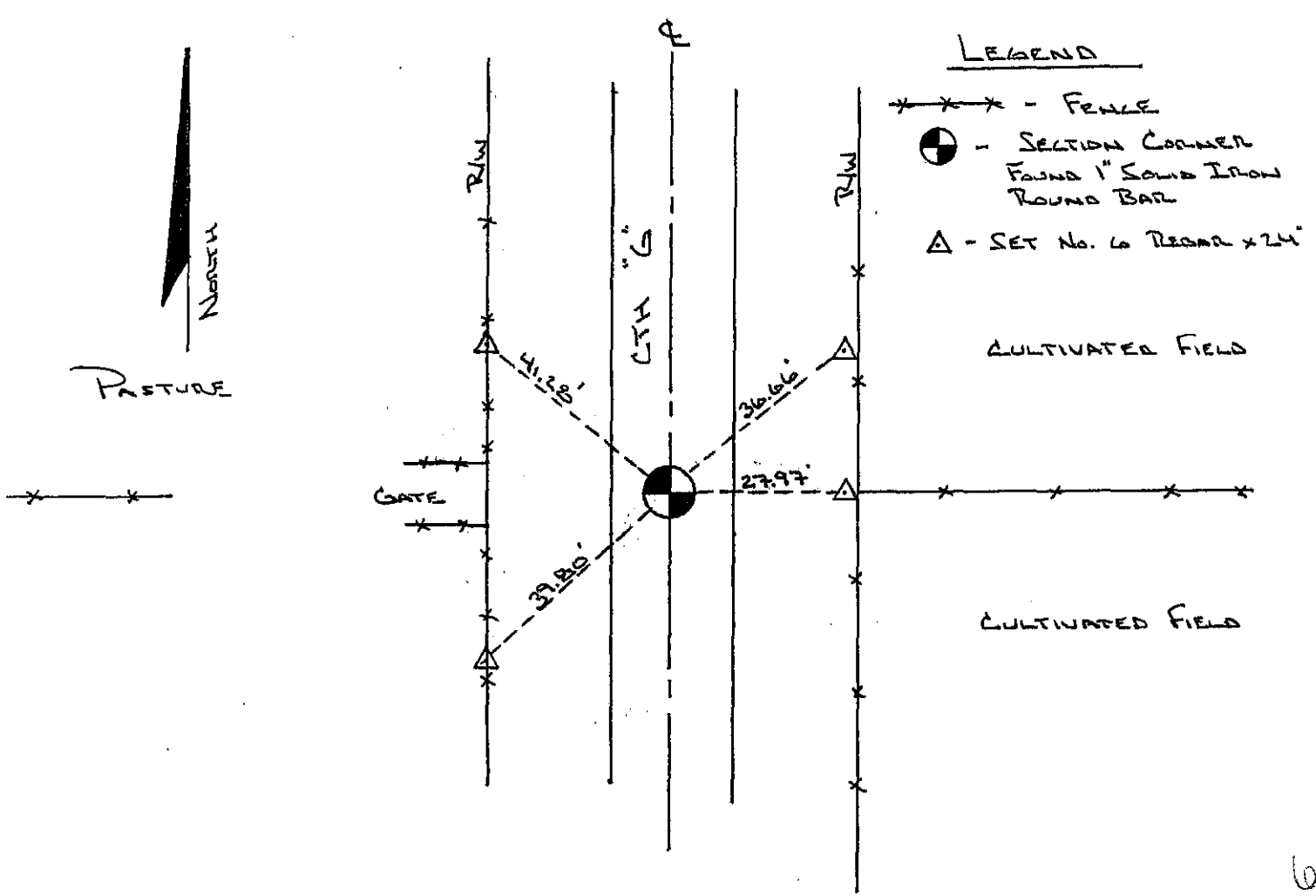


Northwest Corner of Section 24,
 Town 7 North, Range 1 West,
 Town of Castle Rock,
 Grant County, Wisconsin

- (b) Describe any record evidence, monument evidence, occupational evidence, testimonial evidence or any other material evidence you considered, and whether the monument was found or placed.
 No sign of the original corner or ties. A 1" iron bar was located in the centerline of CTH G where an east-west fence line intersects. No record of the placement of the bar was found. Omer and Alois Menke, life long residents of the area, indicated the corner has always been accepted as correct. The location was verified by an EDM traverse of the area and accepted as the corner location.

- (c) In the plan view drawing below, provide reference ties to at least 4 witness monuments, or, if the location is within a municipality, to at least 2 witness monuments. (Witness monuments shall be made of concrete, natural stone, iron or other equally durable material.) Describe witness monuments.

- (d) Show a plan view drawing depicting the relevant monuments and reference ties which is sufficient in detail to enable accurate relocation of the corner monument if the corner monument is disturbed. Indicate North.



(e) Describe any material discrepancy between the location of the corner as restored or reestablished and the location of that corner as previously restored or reestablished by distance and direction. Show the discrepancy on the plan view drawing under (d), and (1) the corner as restored or reestablished, and (2) to at least 2 of the witness monuments shown on the drawing in (d) above.

NONE.

(f) Was the corner restored through acceptance of (1) an obliterated evidence location, or, (2) a found perpetuated location?

(1) Obliterated evidence location.

(g & h) Was the corner reestablished through lost corner proportionate methods? If so, show the method, including the directions and distances to other public land survey corners used as evidence or used for proportioning in determining the corner location?

NO.

(i) I, Greg A. Jewell, certify that the corner location shown on this record was determined by me or under my direction and control and that this U.S. Public Land Survey Monument Record is correct and complete to the best of my knowledge and belief.

Affix Land Surveyor Seal

Signature