

71062

U.S. PUBLIC LAND SURVEY MONUMENT RECORD - GRANT COUNTY, WI

Section 24, Town 7 North Range 1 West, Town of Castle Rock (a)

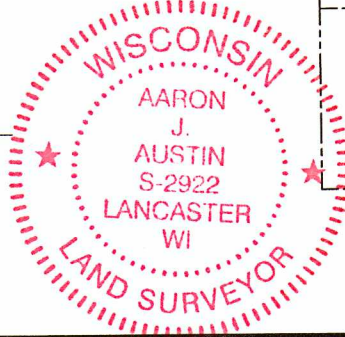
NOTE: This form is intended and designed to fulfill all requirements of the Wisconsin Administrative Code Chapter A-E 7.08, U.S. Public Land Survey Monument Record (3) (a) (b) (c) (d) (e) (f) (g) (h) (i).

CERTIFICATE: (i)

I, Aaron J. Austin, Wisconsin Professional Land Surveyor, do hereby certify that the corner location on this record was determined by me and/or under my direct supervision and that this U.S. Public Land Survey Monument Record is correct and complete to the best of my knowledge and belief.

Dated this 20th day of July, 2021.

Aaron J. Austin
Aaron J. Austin, S-2922



⊕ = CORNER LOCATION

Grant County Coordinates:
NAD 83 (2011)
Northing: 606,624.30
Easting: 891,425.18

HISTORY OF CORNER ESTABLISHMENT:

Original corner was set in 1833 by Sylvester Sibley.
No other record of this corner being set was found.

DESCRIPTION OF CORNER EVIDENCE FOUND: (b) (f) (g) (h)

No evidence from original field notes was found. I set a 3/4" Rebar midway and online between the Northwest and the Northeast of Section 24. This checked well with recorded dimensions. I set four witness corners after I verified the Monuments location with G.P.S. and E.D.M. methods.

DESCRIPTION OF CORNER AND WITNESS MONUMENTS, references and accessories used to perpetuate the original or re-established location of this corner. (c) (d) (e)

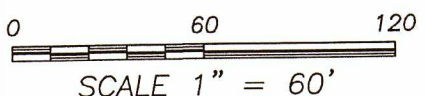
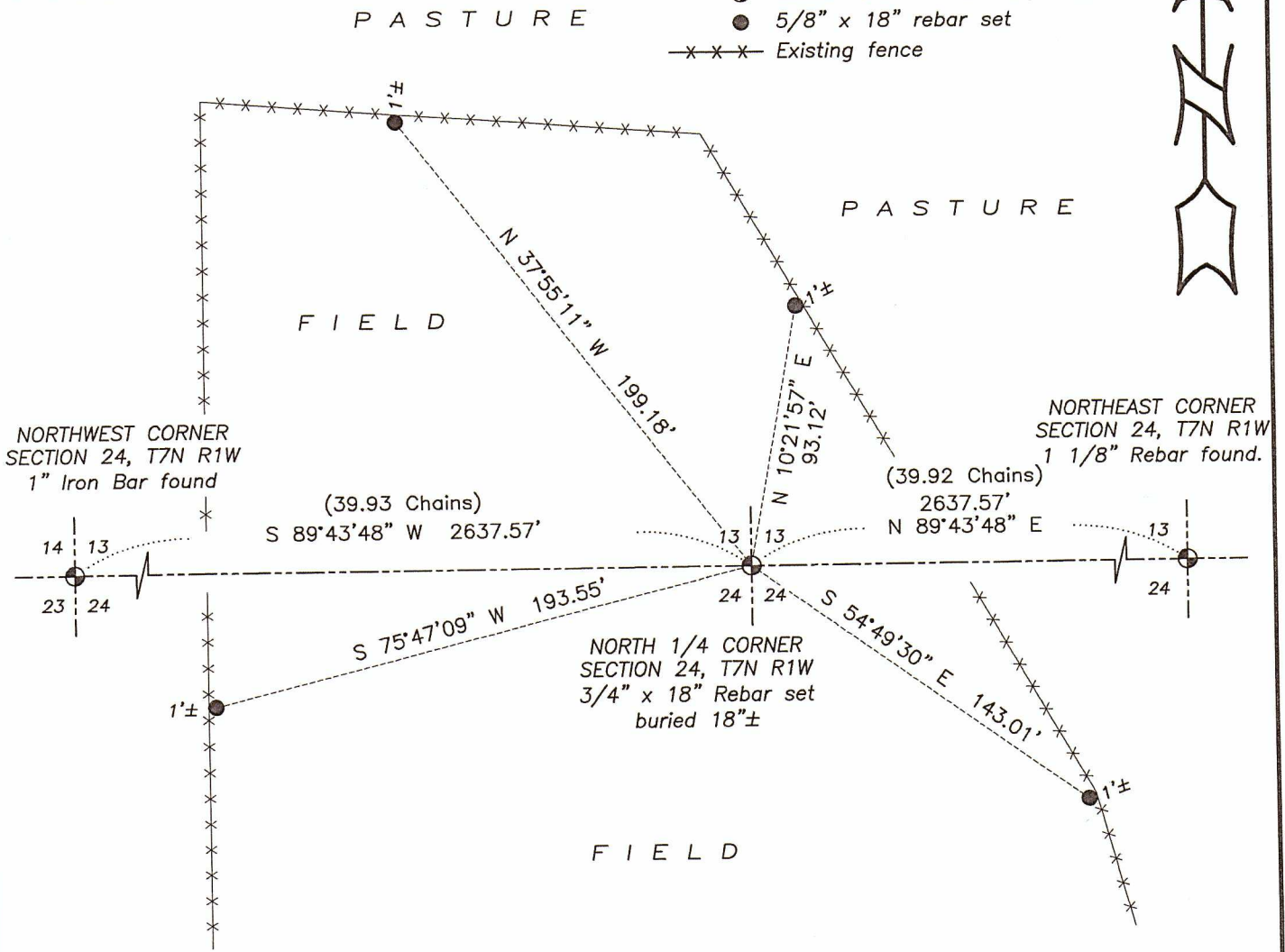
Witnesses to corner location Shane Austin.

Drawn by Owen Austin

SKETCH:

LEGEND

- ⊕ Section Corner—as designated
- 5/8" x 18" rebar set
- x-x-x- Existing fence



H:\CRD\21S121
H:\TIE\T7NR1W\62