

U.S. PUBLIC LAND SURVEY MONUMENT RECORD

(As Required By s. A-E 7.08, WI Adm. Code)

History of original corner establishment and subsequent restorations and description of any record, monument, occupational, testimonial or other evidence considered: *I found no recent survey records of this corner. An existing east-west fence was accepted for the notthing of the corner and was nearly 1/2 the distance between the NE and SE corners. I computed the corner on line between these corners at the fence. The corner fell on the northwest side of a 12" white oak at a change in fence types.*

Corner was: (Check All That Apply)

- Restored through acceptance of an obliterated evidence location
- Restored through acceptance of a found perpetuated location
- Considered a lost corner and reestablished through lost corner proportionate methods (include a plan view drawing showing distances and directions to other Public Land Survey Corners used for proportioning and determining the corner location)
- Restored or reestablished in a location that differs from a previous restoration or reestablishment (include a plan view drawing and indicate what was set and /or found)

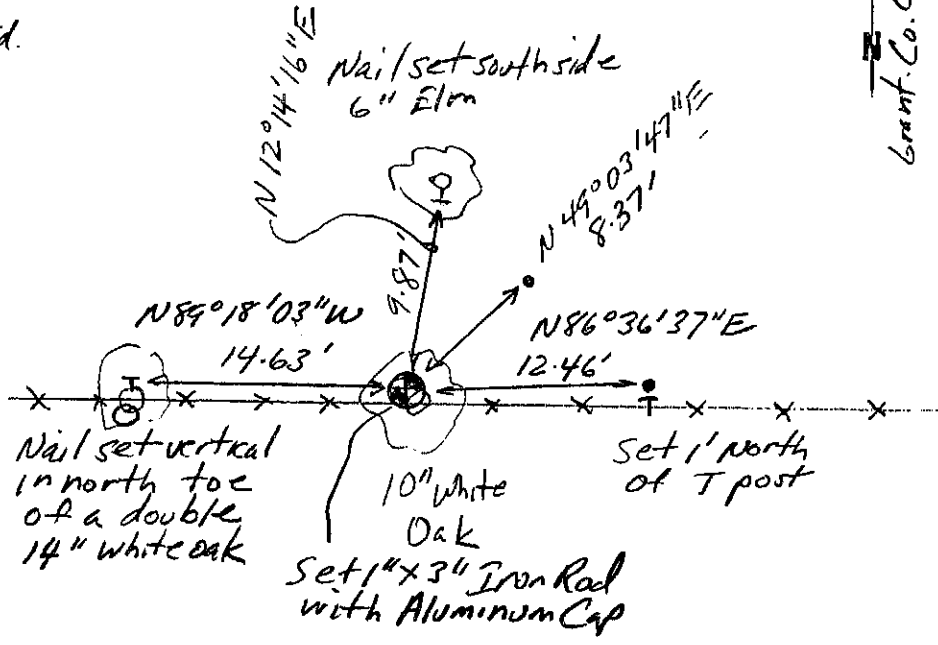
Describe the monument and accessories used to perpetuate the location of this corner. (Include a plan view drawing and indicate what was set and/or found)

Grant County
Coordinates
(N) 609109.02
(E) 878204.42

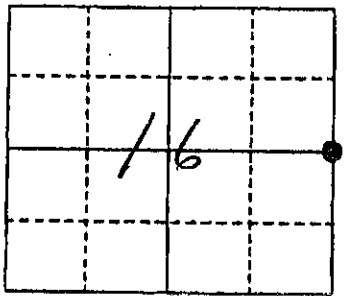
Alum. Mon. Fd.
50°05'16"W
2634.79'
50°05'16"W
2632.41'
3/4" I.R. Fd.

1" = 10' +/-
• 1/2" Iron Rod Set

The E 1/4
corner of Section 16
T. 7 N., R. 1 W.
Grant County, Wisconsin
Job ID: 2004-25
Book # 8



Grant Co. Coord. System



● = Location of Corner

Michael R. LaRosa
Type or print name) certify that the corner location shown on this record was determined by me or under my direction and control and that this U.S. Public Land Survey Monument Record is correct and complete to the best of my knowledge and belief.
Michael R. LaRosa 11/18/2004
Signature Date



Index No. 57