

**U.S. PUBLIC LAND SURVEY MONUMENT RECORD**

(As Required By s. A-E 7.08, WI Adm. Code)

History of original corner establishment and subsequent restorations and description of any record, monument, occupational, testimonial or other evidence considered: *Found and accepted a 1 1/4" Iron Rod at an ancient intersection of down Peaces west and north. This iron was placed by James Olson and Bruce Bowden in 1980 and noted in surveys by Laurence Schmit from 1980-81. It matches a record from a Survey by Sampson from 1897.*

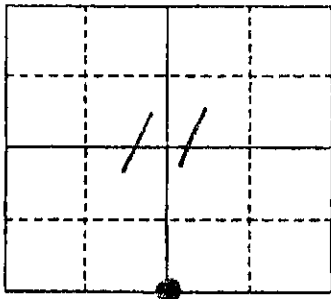
Corner was: (Check All That Apply)

- Restored through acceptance of an obliterated evidence location
- Restored through acceptance of a found perpetuated location
- Considered a lost corner and reestablished through lost corner proportionate methods (include a plan view drawing showing distances and directions to other Public Land Survey Corners used for proportioning and determining the corner location)
- Restored or reestablished in a location that differs from a previous restoration or reestablishment (include a plan view drawing and indicate what was set and /or found)

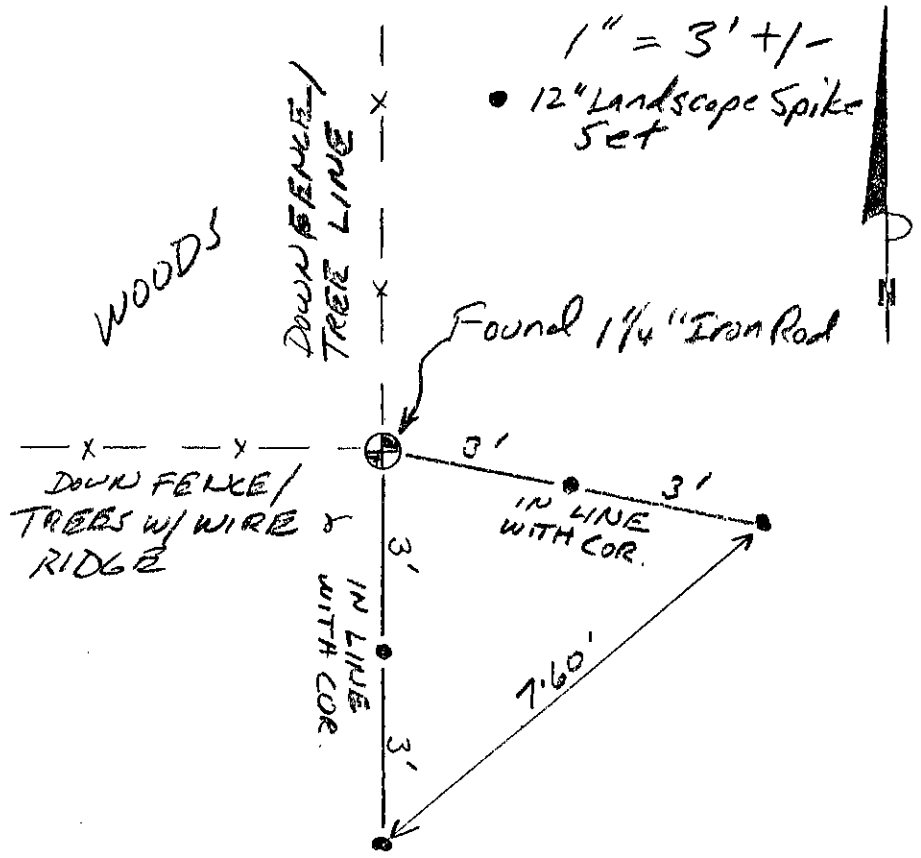
Describe the monument and accessories used to perpetuate the location of this corner. (Include a plan view drawing and indicate what was set and/or found)

*Grant County  
Coordinates  
(N) 611812.59  
(E) 886151.45*

The 5 1/4  
corner of Section 11  
T. 7 N., R. 1 W  
Grant County, Wisconsin  
Job ID: 2005-40  
Book # 9



● = Location of Corner



Michael R LaRosa

Type or print name) certify that the corner location shown on this record was determined by me or under my direction and control and that this U.S. Public Land Survey Monument Record is correct and complete to the best of my knowledge and belief.

Michael R. LaRosa 12/1/2005

Signature

Date

Index No. 44