

U.S. PUBLIC LAND SURVEY MONUMENT RECORD

(As Required By s. A-E 7.08, WI Adm. Code)

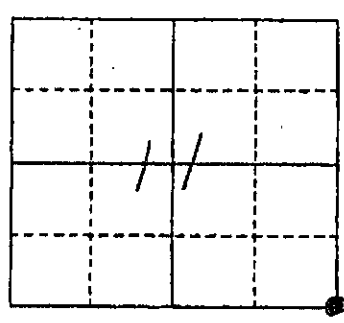
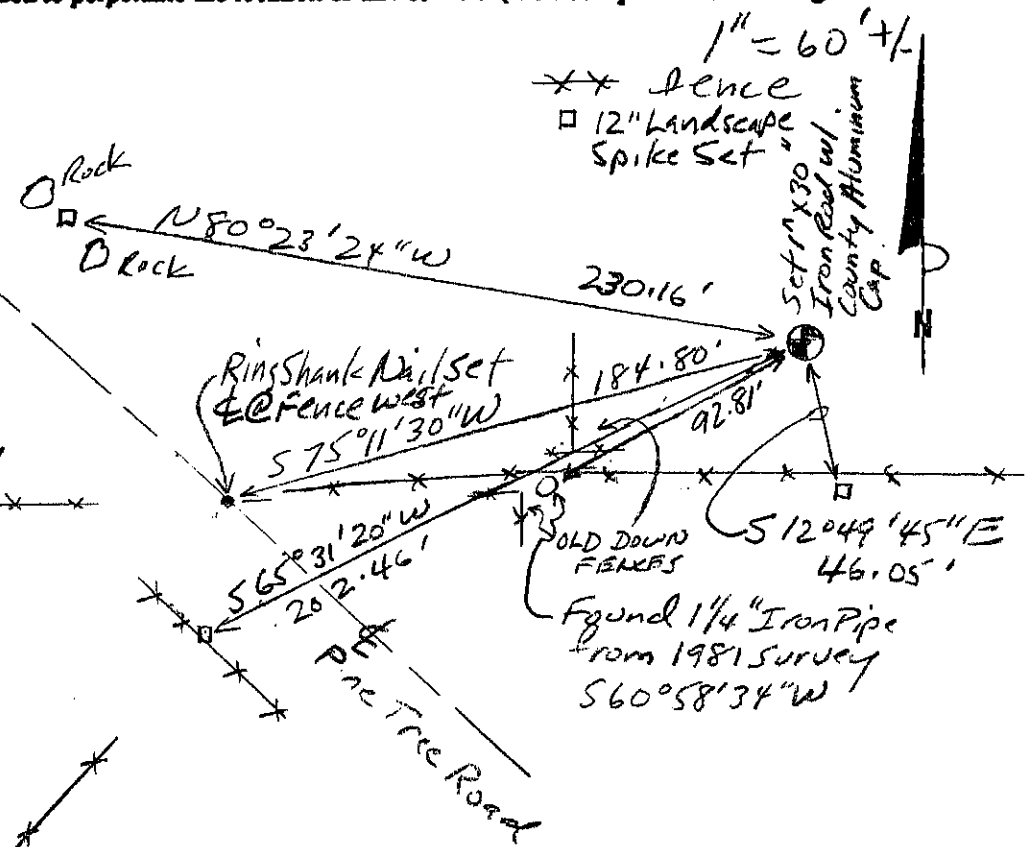
History of original corner establishment and subsequent restorations and description of any record, monument, occupational, testimonial or other evidence considered: A survey from 1981 was tied to the SW 1/4 of the section and referenced to south line of the SE 1/4. I contacted the surveyor and he reviewed his crews field notes and provided details to locate a pipe placed by his crew. I located a 1 1/4" Iron Pipe at a jumbled intersection of several fences. This location was not harmonious with any other government corners in the area. It appears to have been placed 5280' from the county line and 3/4 mile from an occupied 40 to the north at the turn of the last century. I computed the corner by double proportion.

- Restored through acceptance of an obliterated evidence location
- Restored through acceptance of a found perpetuated location
- Considered a lost corner and reestablished through lost corner proportionate methods (include a plan view drawing showing distances and directions to other Public Land Survey Corners used for proportioning and determining the corner location)
- Restored or reestablished in a location that differs from a previous restoration or reestablishment (include a plan view drawing and indicate what was set and/or found)

SEE SECTION SUMMARY FOR RELATIONSHIPS TO OTHER CORNERS!
Describe the monument and accessories used to perpetuate the location of this corner. (Include a plan view drawing and indicate what was set and/or found)

Grant County
Coordinates
(N) 611884.76
(E) 888748.48

The SE
corner of Section 11
T. 7 N., R. 1 W.
Grant County, Wisconsin
Job ID: 2005-40
Book # 9



● = Location of Corner

Michael R. LaRosa
Type or print name certify that the corner location shown on this record was determined by me or under my direction and control and that this U.S. Public Land Survey Monument Record is correct and complete to the best of my knowledge and belief.
Michael R. LaRosa 12/1/2005
Signature Date



Index No. 43