

U.S. PUBLIC LAND SURVEY MONUMENT RECORD

(As Required By s. A-E 7.08, WI Adm. Code)

History of original corner establishment and subsequent restorations and description of any record, monument, occupational, testimonial or other evidence considered: *ownership records indicate that this corner was never occupied after the original government survey so no physical evidence exists. Charles Sampson located this corner by the southwest bearing tree, now gone. He laid out the SW 1/4 of the SW 1/4 in 1897. I projected the west line of this forty north to re set the corner as shown below. It falls 70' +/- east of a straight line between the SW & NW corners but fits fence evidence near the section center much better than the projected location.*

- Corner was: (Check All That Apply)
- Restored through acceptance of an obliterated evidence location
 - Restored through acceptance of a found perpetuated location
 - Considered a lost corner and reestablished through lost corner proportionate methods (include a plan view drawing showing distances and directions to other Public Land Survey Corners used for proportioning and determining the corner location)
 - Restored or reestablished in a location that differs from a previous restoration or reestablishment (include a plan view drawing and indicate what was set and/or found)

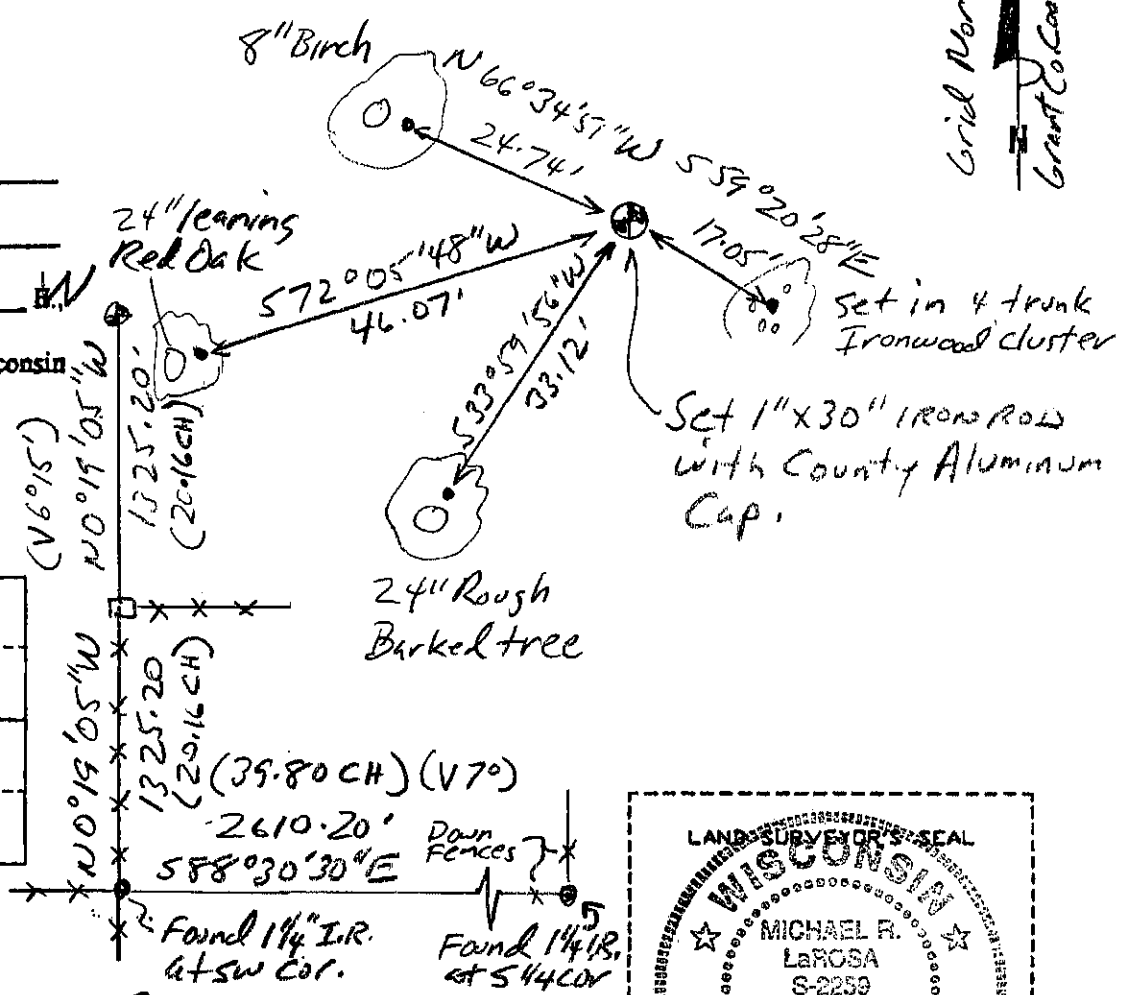
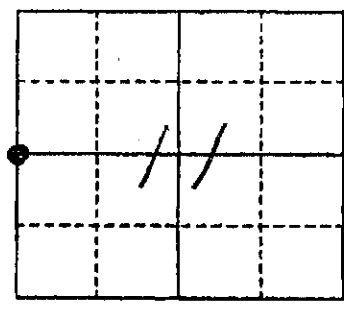
Describe the monument and accessories used to perpetuate the location of this corner. (Include a plan view drawing and indicate what was set and/or found)

*Grant County
Coordinates
(N) 614395.01
(E) 883527.41*

*• 3/8" Iron Rod Set
1" = 20' +/-*

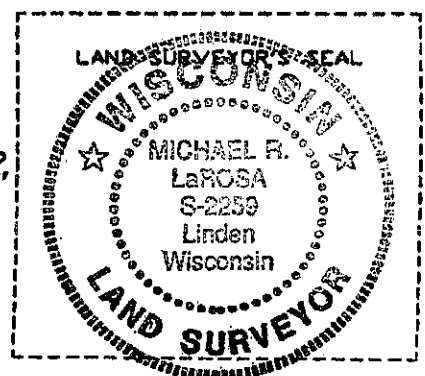
*Grid North
Grant Co. Coord. Sys.*

The W 1/4
corner of Section 11
T. 7 N., R. 1 E.
Grant County, Wisconsin
Job ID: 2005-40
Book # 9



● = Location of Corner

Michael R. LaRosa
Type or print name certify that the corner location shown on this record was determined by me or under my direction and control and that this U.S. Public Land Survey Monument Record is correct and complete to the best of my knowledge and belief.
Michael R. LaRosa 12/1/2005



Index No. 38