

# GRANT COUNTY CERTIFIED LAND CORNER

CORNER NUMBER 25

**CERTIFICATE:**

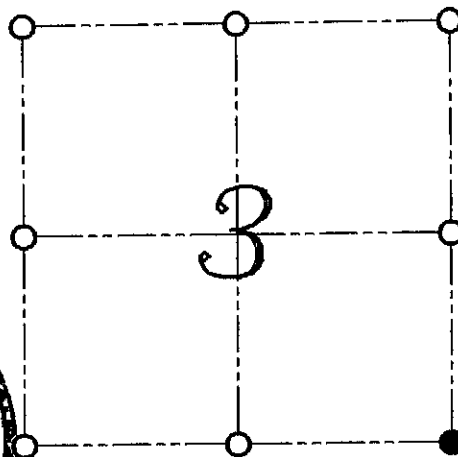
I, LARRY L. AUSTIN, DO HEREBY CERTIFY THAT ON 25th DAY OF OCTOBER, 1999, I FOUND NO EVIDENCE OF THE SOUTHEAST CORNER OF SECTION 3, TOWN 7 NORTH, RANGE 1 WEST, OF THE FOURTH PRINCIPAL MERIDIAN, AND I RE-ESTABLISHED SAID CORNER ACCORDING TO THE WISCONSIN STATUTES AS SHOWN AND DESCRIBED HEREON.

DATED THIS 4th DAY OF NOVEMBER, 1999

*Larry L. Austin*  
LARRY L. AUSTIN S-1903



SEAL



● = CORNER LOCATION  
SOUTHEAST CORNER OF  
SECTION 3, T 7 N R 1 W  
TOWN OF CASTLE ROCK

**HISTORY OF ORIGINAL CORNER ESTABLISHMENT:**

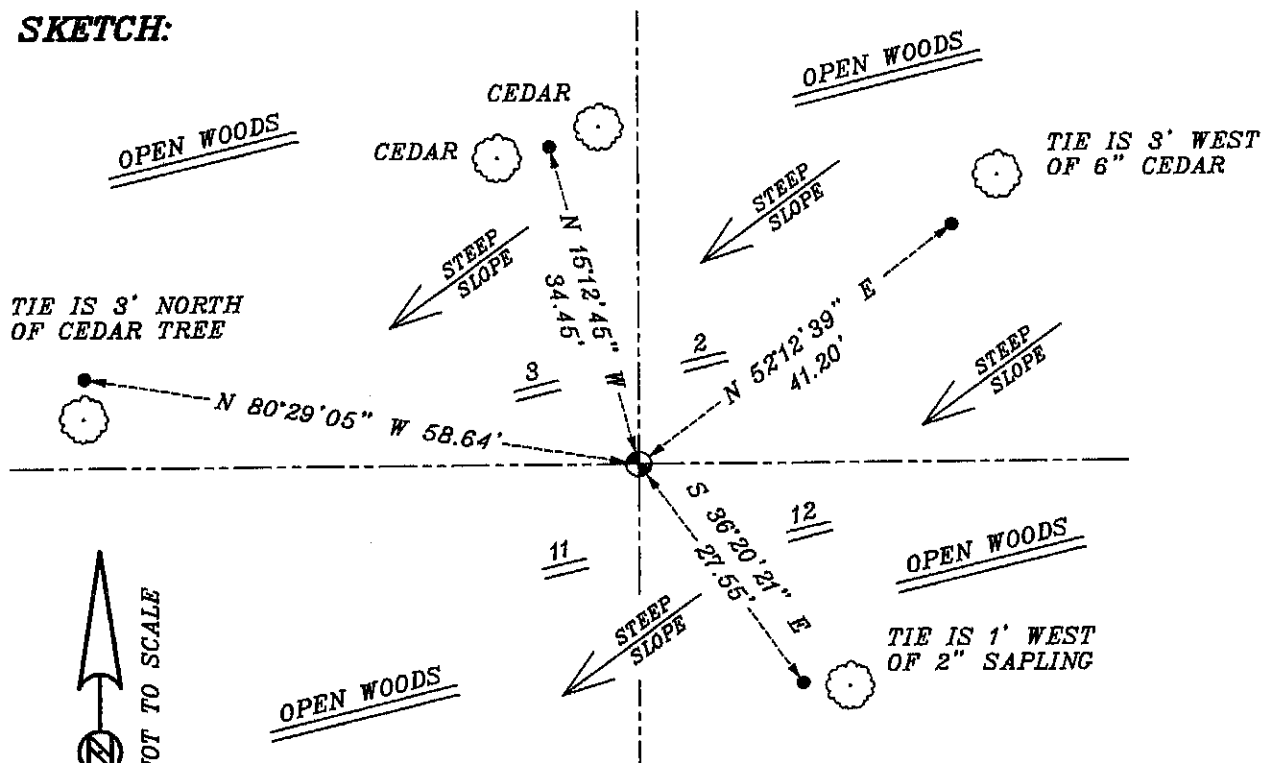
CORNER WAS SET IN 1833 BY SIBLEY. IN 1880 JOEL BARBER TIED TO THE CORNER. (WHAT HE FOUND IS UNKNOWN)

**DESCRIPTION OF CORNER EVIDENCE FOUND:**

I FOUND NO EVIDENCE TO THE LOCATION OF THIS CORNER. I RESET THE CORNER BASED ON PROPORTIONAL METHODS. VERIFIED THIS LOCATION USING E.D.M. AND G.P.S. METHODS.

**DESCRIPTION OF CORNER AND WITNESS MONUMENTS, REFERENCES AND ACCESSORIES USED TO PERPETUATE THE ORIGINAL OR RE-ESTABLISHED LOCATION OF THIS CORNER:**  
WITNESS TO THE CORNER LOCATION: BOBBY SEDGWICK ; SHELBY BLINDERT

**SKETCH:**



**LEGEND**

- NUMBER 8 X 30" REBAR SET WITH GRANT COUNTY ALUMINUM CAP
- NUMBER 4 X 24" REBAR SET WITH RED PLASTIC CAP