

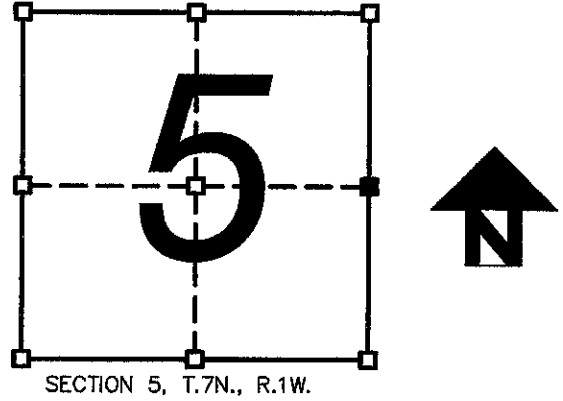
GRANT COUNTY CERTIFIED U.S. PUBLIC LAND SURVEY MONUMENT RECORD

INSTRUCTIONS: THIS RECORD SHALL SHOW THE LOCATION OF THE CORNER AND SHALL INCLUDE ALL OF THE FOLLOWING NINE ELEMENTS (A THROUGH I)

- (A) IDENTIFY THE CORNER BY REFERENCE TO THE U.S. PUBLIC LAND SURVEY SYSTEM
 ■ = CORNER MONUMENT RESTORED

WITNESSES TO CORNER LOCATION:
 TERRY PREM
 WES KRAEMER
 JASON PELLOCK

GRANT COUNTY COORDINATES
 NORTHING: 619,697.34'
 EASTING: 872,691.01'



- (B) DESCRIBE ANY RECORD EVIDENCE, MONUMENT EVIDENCE, OCCUPATIONAL EVIDENCE, TESTIMONIAL EVIDENCE, OR ANY OTHER MATERIAL EVIDENCE YOU CONSIDERED, AND WHETHER THE MONUMENT WAS FOUND OR PLACED.

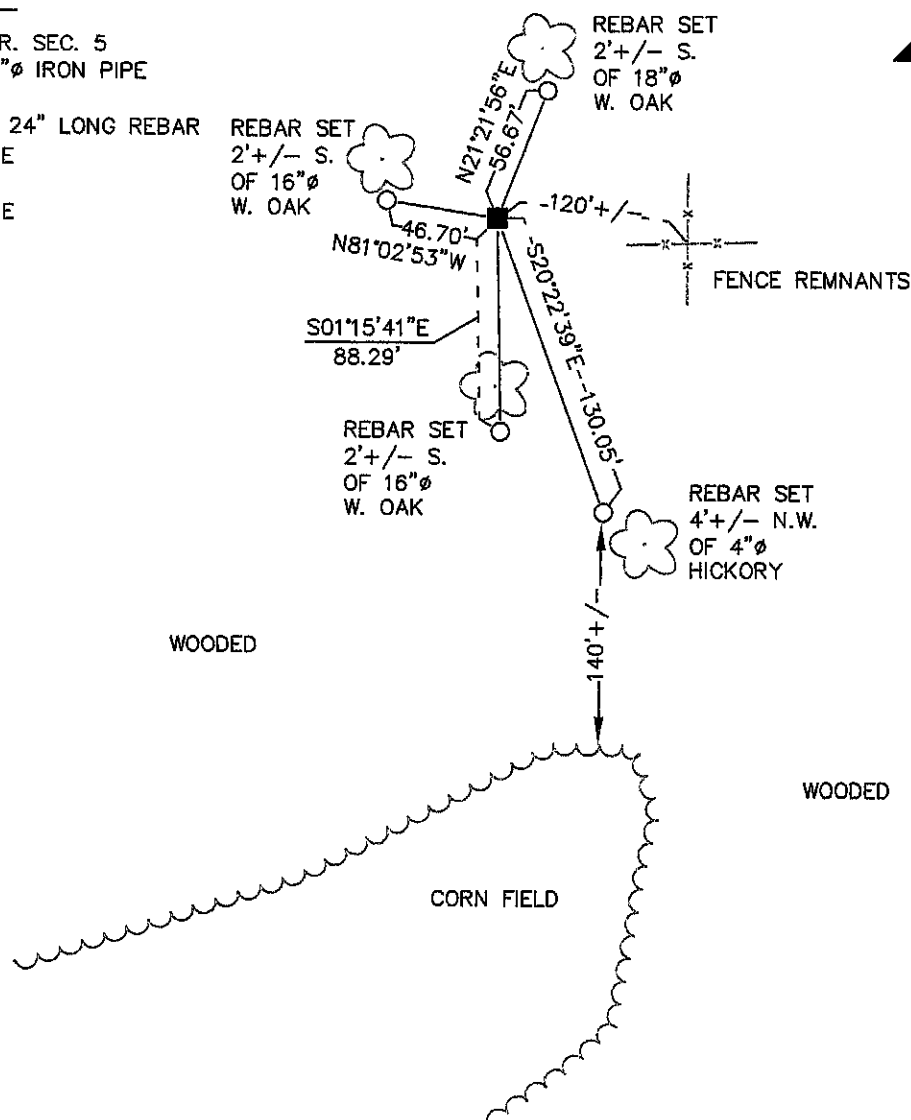
I FOUND A 1 1/2" DIAMETER IRON PIPE AT THIS CORNER. I FOUND NO RECORD OF THIS PIPE IN THE SURVEY RECORDS. HOWEVER, THE PIPE FITS WELL WITH OCCUPATIONAL EVIDENCE TO THE WEST AND SOUTH OF THE CORNER SO I ACCEPTED IT.

- (C) IN THE PLAN VIEW DRAWING BELOW, PROVIDE REFERENCE TIES TO AT LEAST 4 WITNESS MONUMENTS, OR, IF THE LOCATION IS WITHIN A MUNICIPALITY, TO AT LEAST 2 WITNESS MONUMENTS, (WITNESS MONUMENTS SHALL BE MADE OF CONCRETE, NATURAL STONE, IRON OR OTHER EQUALLY DURABLE MATERIAL). DESCRIBE WITNESS MONUMENTS.

- (D) SHOW A PLAN VIEW DRAWING DEPICTING THE RELEVANT MONUMENTS AND REFERENCE TIES WHICH IS SUFFICIENT IN DETAIL TO ENABLE ACCURATE RELOCATION OF THE CORNER MONUMENT IF IT IS DISTURBED.

LEGEND

- E 1/4 COR. SEC. 5
FD. 1 1/2" Ø IRON PIPE
- 3/4" Ø X 24" LONG REBAR SET AS TIE
- x—x— FENCE LINE
- ~~~~~ TREE LINE



(E) DESCRIBE ANY MATERIAL DISCREPANCY BETWEEN THE LOCATION OF THE CORNER AS RESTORED OR REESTABLISHED AND THE LOCATION OF THAT CORNER AS PREVIOUSLY RESTORED OR REESTABLISHED BY DISTANCE AND DIRECTION. SHOW THE DISCREPANCY ON THE PLAN VIEW DRAWING UNDER (D), ABOVE. SHOW THE DISTANCES BETWEEN THE CORNER AS PREVIOUSLY RESTORED OR REESTABLISHED AND (1) THE CORNER AS RESTORED OR REESTABLISHED, AND (2) TO AT LEAST 2 OF THE WITNESS MONUMENTS SHOWN ON THE DRAWING IN (D) ABOVE.

NO DISCREPANCY FOUND

(F) WAS THE CORNER RESTORED THROUGH ACCEPTANCE OF (1) AN OBLITERATED EVIDENCE LOCATION, OR, (2) A FOUND PERPETUATED LOCATION?

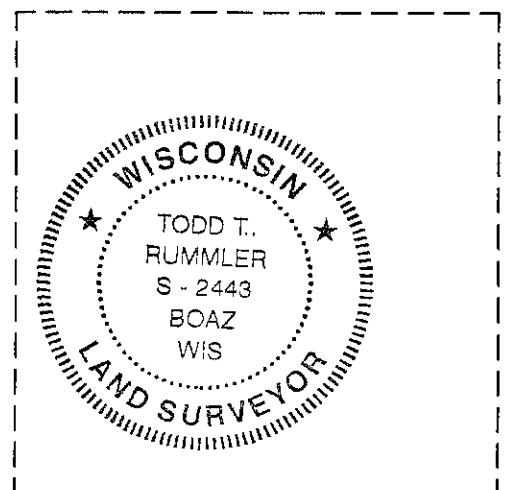
(2) A FOUND PERPETUATED LOCATION.

(G&H) WAS THE CORNER REESTABLISHED THROUGH LOST CORNER PROPORTIONATE METHODS? IF SO, SHOW THE METHOD, INCLUDING THE DIRECTIONS AND DISTANCES TO OTHER PUBLIC LAND SURVEY CORNERS USED AS EVIDENCE OR USED FOR PROPORTIONING IN DETERMINING THE CORNER LOCATION.

NO

AFFIX LAND SURVEYOR SEAL

(I) I, TODD T. RUMMLER, RLS- 2443,
CERTIFY THAT THE CORNER LOCATION SHOWN ON
THIS RECORD WAS DETERMINED BY ME OR UNDER MY
DIRECTION AND CONTROL AND THAT THIS U.S. PUBLIC LAND
SURVEY MONUMENT RECORD IS CORRECT AND COMPLETE
TO THE BEST OF MY KNOWLEDGE AND BELIEF.



 
SIGNATURE DATE