

GRANT COUNTY CERTIFIED LAND CORNER

CERTIFICATE:

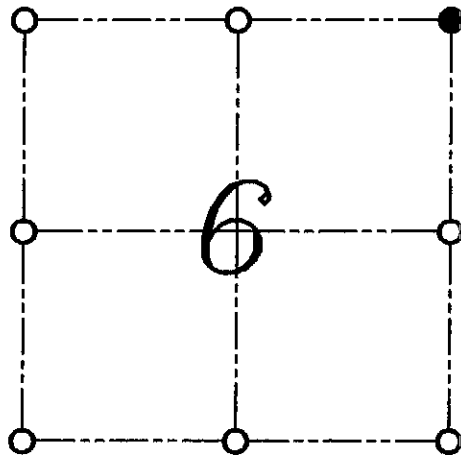
I, LARRY L. AUSTIN, DO HEREBY CERTIFY THAT ON SIXTEENTH DAY OF APRIL, 1999, I FOUND NO EVIDENCE OF THE NORTHEAST CORNER OF SECTION 6, TOWN 7 NORTH, RANGE 1 WEST, OF THE FOURTH PRINCIPAL MERIDIAN, AND I RE-ESTABLISHED SAID CORNER ACCORDING TO THE WISCONSIN STATUTES AS SHOWN AND DESCRIBED HEREON.

DATED THIS NINETEENTH DAY OF APRIL, 1999

Larry L. Austin
LARRY L. AUSTIN S-1903



CORNER NUMBER 11



NORTHEAST CORNER OF SECTION 6, T 7 N R 1 W TOWN OF CASTLE ROCK

HISTORY OF ORIGINAL CORNER ESTABLISHMENT:

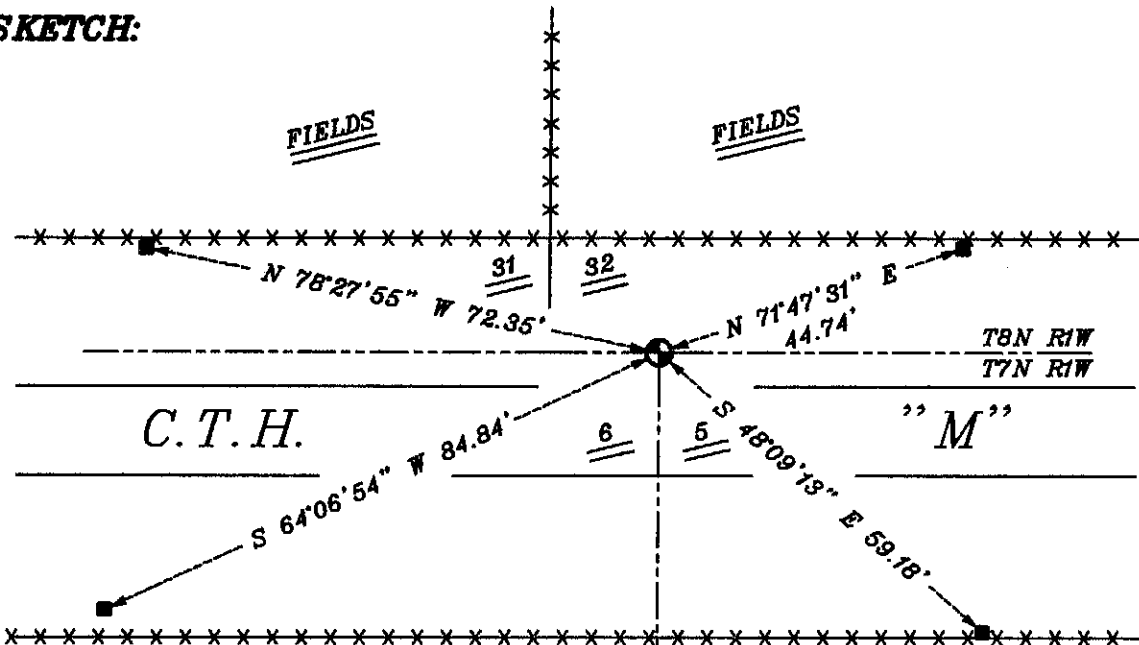
CORNER WAS SET IN 1833 BY SIBLEY.

DESCRIPTION OF CORNER EVIDENCE FOUND:

I SET THE CORNER AT THE RECORDED OFFSET FROM THE OCCUPIED FENCE NORTH AND AND ONLINE WITH AREA FENCES EAST-WEST OF THE CORNER; VERIFIED THIS LOCATION USING E.D.M. AND G.P.S. METHODS.

DESCRIPTION OF CORNER AND WITNESS MONUMENTS, REFERENCES AND ACCESSORIES USED TO PERPETUATE THE ORIGINAL OR RE-ESTABLISHED LOCATION OF THIS CORNER:
WITNESS TO THE CORNER LOCATION: BOBBY SEDGWICK ; SHELBY BLINDERT

SKETCH:



LEGEND

- ⊙ NUMBER 8 X 30" REBAR SET WITH GRANT COUNTY ALUMINUM CAP
- NUMBER 4 X 24" REBAR SET WITH RED PLASTIC CAP
- *** EXISTING FENCE LOCATION