

GRANT COUNTY CERTIFIED U.S. PUBLIC LAND SURVEY MONUMENT RECORD

INSTRUCTIONS: THIS RECORD SHALL SHOW THE LOCATION OF THE CORNER AND SHALL INCLUDE ALL OF THE FOLLOWING NINE ELEMENTS (A THROUGH I)

(A) IDENTIFY THE CORNER BY REFERENCE TO THE U.S. PUBLIC LAND SURVEY SYSTEM

■ = CORNER MONUMENT RESTORED

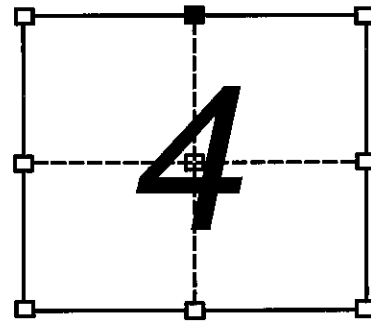
WITNESS TO CORNER LOCATION:

Todd T. Rummier
Terrance M. Prem

GRANT COUNTY COORDINATES:

NORTHING: 622350.51'

EASTING: 875318.18'



SECTION 4, T7N, R1W



(B) DESCRIBE ANY RECORD EVIDENCE, MONUMENT EVIDENCE, OCCUPATIONAL EVIDENCE, TESTIMONIAL EVIDENCE, OR ANY OTHER MATERIAL EVIDENCE YOU CONSIDERED, AND WHETHER THE MONUMENT WAS FOUND OR PLACED.

I PLACED THIS CORNER ON THE LINE BETWEEN THE SOUTH QUARTER CORNER AND THE SOUTHWEST CORNER OF SECTION 33, T8N, R1W AT THE RECORD AVERAGE GOVERNMENT OFFSET FROM THE SOUTH QUARTER CORNER.

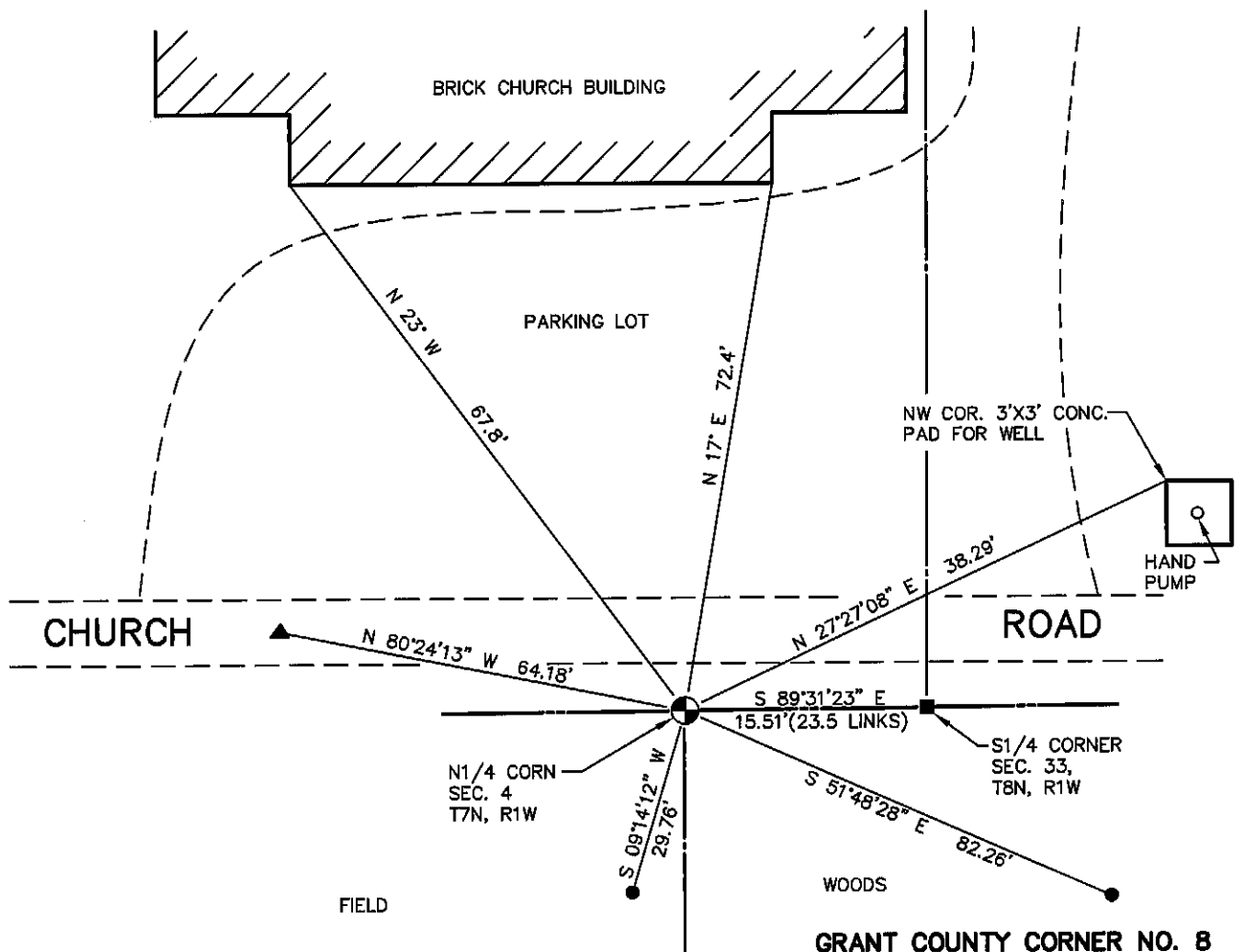
(C) IN THE PLAN VIEW DRAWING BELOW, PROVIDE REFERENCE TIES TO AT LEAST 4 WITNESS MONUMENTS, OR, IF THE LOCATION IS WITHIN A MUNICIPALITY, TO AT LEAST 2 WITNESS MONUMENTS, (WITNESS MONUMENTS SHALL BE MADE OF CONCRETE, NATURAL STONE, IRON OR OTHER EQUALLY DURABLE MATERIAL). DESCRIBE WITNESS MONUMENTS.

(D) SHOW A PLAN VIEW DRAWING DEPICTING THE RELEVANT MONUMENTS AND REFERENCE TIES WHICH IS SUFFICIENT IN DETAIL TO ENABLE ACCURATE RELOCATION OF THE CORNER MONUMENT IF IT IS DISTURBED.

LEGEND

- 3/4" X 24" IRON ROD FOUND
- ⊙ 3/4" ϕ X 24" IRON ROD WITH GRANT COUNTY ALUMINUM CAP SET
- 1" ϕ IRON PIPE FOUND
- ▲ COTTON GIN SPIKE SET AS TIE

TIE INFO. BY TOTAL STATION



GRANT COUNTY CORNER NO. 8

(E) DESCRIBE ANY MATERIAL DISCREPANCY BETWEEN THE LOCATION OF THE CORNER AS RESTORED OR REESTABLISHED AND THE LOCATION OF THAT CORNER AS PREVIOUSLY RESTORED OR REESTABLISHED BY DISTANCE AND DIRECTION. SHOW THE DISCREPANCY ON THE PLAN VIEW DRAWING UNDER (D), ABOVE. SHOW THE DISTANCES BETWEEN THE CORNER AS PREVIOUSLY RESTORED OR REESTABLISHED AND (1) THE CORNER AS RESTORED OR REESTABLISHED, AND (2) TO AT LEAST 2 OF THE WITNESS MONUMENTS SHOWN ON THE DRAWING IN (D) ABOVE.

NONE

(F) WAS THE CORNER RESTORED THROUGH ACCEPTANCE OF (1) AN OBLITERATED EVIDENCE LOCATION, OR, (2) A FOUND PERPETUATED LOCATION?

2) A FOUND LOCATION, PERPETUATED

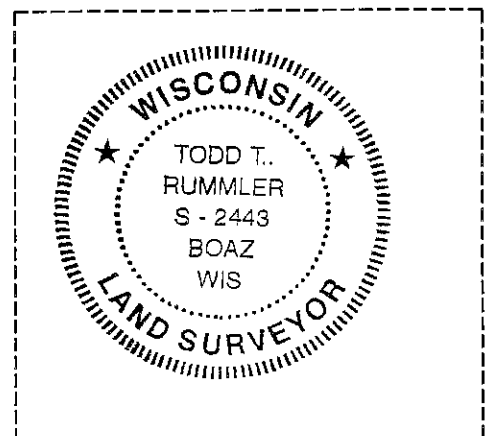
(G&H) WAS THE CORNER REESTABLISHED THROUGH LOST CORNER PROPORTIONATE METHODS? IF SO, SHOW THE METHOD, INCLUDING THE DIRECTIONS AND DISTANCES TO OTHER PUBLIC LAND SURVEY CORNERS USED AS EVIDENCE OR USED FOR PROPORTIONING IN DETERMINING THE CORNER LOCATION.

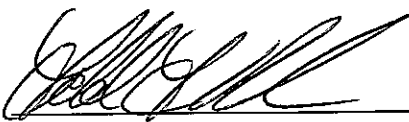
NO

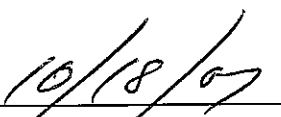
AFFIX LAND SURVEYOR SEAL

(I) I, TODD T. RUMMLER, RLS-2443

CERTIFY THAT THE CORNER LOCATION SHOWN ON THIS RECORD WAS DETERMINED BY ME OR UNDER MY DIRECTION AND CONTROL AND THAT THIS U.S. PUBLIC LAND SURVEY MONUMENT RECORD IS CORRECT AND COMPLETE TO THE BEST OF MY KNOWLEDGE AND BELIEF.




SIGNATURE


DATE