

GRANT COUNTY U.S. PUBLIC LAND SURVEY MONUMENT RECORD

INSTRUCTIONS: THIS RECORD SHALL SHOW THE LOCATION OF THE CORNER AND SHALL INCLUDE ALL OF THE FOLLOWING ELEMENTS (A THROUGH I).

(A) IDENTIFY THE CORNER AS REFERENCED TO THE U.S. PUBLIC LAND SURVEY SYSTEM

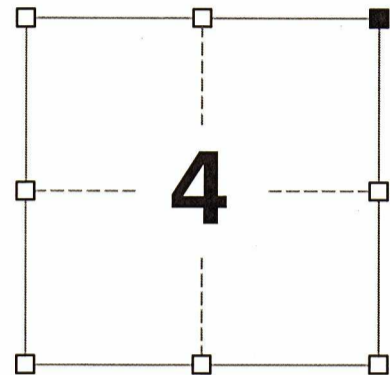
■ = CORNER MONUMENT RESTORED

WITNESSES TO CORNER LOCATION:
BRADLEY A. SCHROEDER

GEOGRAPHIC COORDINATES,
NAD 83 (2011) ADJUSTMENT:
LATITUDE: 43° 07' 06.6438"
LONGITUDE: 90° 29' 22.9028"

WISCONSIN COORDINATE REFERENCE SYSTEM (WISCRS),
GRANT COUNTY, NAD 83 (2011) ADJUSTMENT:
NORTHING: 622,403.03
EASTING: 877,856.65

DEC 07 2016



SECTION 4
TOWNSHIP 7 NORTH, RANGE 1 WEST
TOWN OF CASTLE ROCK

(B) DESCRIBE ANY RECORD EVIDENCE, MONUMENT EVIDENCE, OCCUPATIONAL EVIDENCE, TESTIMONIAL EVIDENCE OR ANY OTHER MATERIAL EVIDENCE YOU CONSIDERED, AND WHETHER THE MONUMENT WAS FOUND OR PLACED.

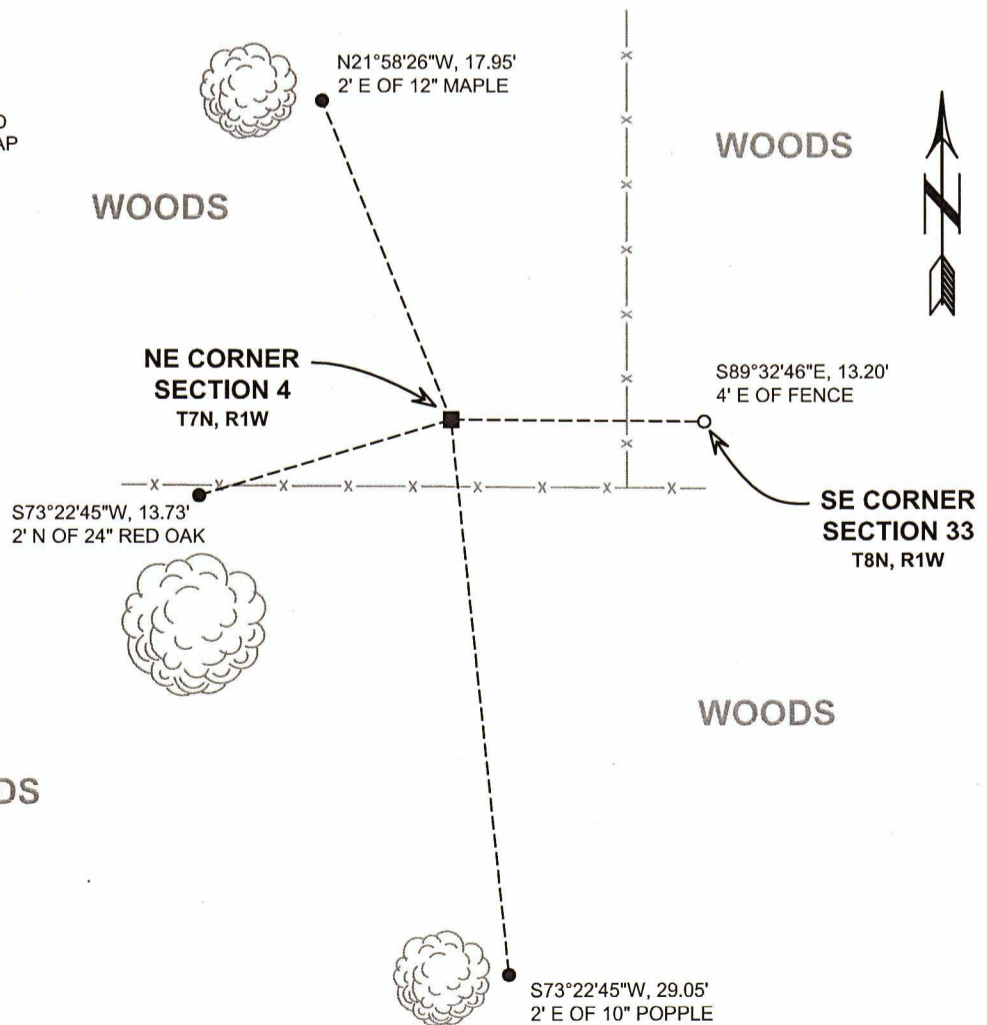
I COULD FIND NO MONUMENTS OR BEARING TREES FROM THE ORIGINAL GOVERNMENT SURVEY. I RECOVERED THE 1" IRON PIPE NOTED BY WALSH AS BEING AT THE SOUTHEAST CORNER OF SECTION 33, T8N, R1W AND ACCEPTED ITS LOCATION AS THE BEST AVAILABLE EVIDENCE AS TO THE LOCATION OF THE NORTHEAST CORNER OF SECTION 4. THIS CORNER WAS REMONUMENTED WITH A 1 1/4" x 30" IRON ROD WITH A GRANT COUNTY ALUMINUM CAP AT THE RECORD GOVERNMENT OFFSET FROM THE SOUTHEAST CORNER OF SECTION 33 ON THE SENIOR TOWN LINE BETWEEN THE SOUTHEAST CORNER AND THE SOUTH QUARTER CORNER OF SAID SECTION 33.

(C) IN THE PLAN VIEW DRAWING BELOW, PROVIDE REFERENCE TIES TO AT LEAST 4 WITNESS MONUMENTS. WITNESS MONUMENTS SHALL BE MADE OF CONCRETE, NATURAL STONE, IRON, BEARING TREES OR ANY OTHER EQUALLY DURABLE MATERIAL. DEPICT THE RELEVANT MONUMENTS AND REFERENCE TIES WITH SUFFICIENT DETAIL TO ENABLE ACCURATE RELOCATION OF THE CORNER IF THE CORNER MONUMENT IS DISTURBED.

(D)

LEGEND:

- SET 1 1/4" x 30" IRON ROD w/ GRANT CO. ALUM. CAP
- 1" IRON PIPE RECOVERED
- 3/4" x 24" IRON ROD SET AS ACCESSORY



(E) DESCRIBE ANY MATERIAL DISCREPANCY BETWEEN THE LOCATION OF THE CORNER AS RESTORED OR REESTABLISHED AND THE LOCATION OF THAT CORNER AS PREVIOUSLY RESTORED OR REESTABLISHED BY DISTANCE AND DIRECTION. SHOW THE DISCREPANCY ON THE PLAN VIEW DRAWING UNDER (D), ABOVE. SHOW THE DISTANCES BETWEEN THE CORNER AS PREVIOUSLY RESTORED OR REESTABLISHED AND (1) THE CORNER AS RESTORED OR REESTABLISHED, AND (2) TO AT LEAST 2 OF THE WITNESS MONUMENTS SHOWN ON THE DRAWING IN (D) ABOVE.

N/A

(F) WAS THE CORNER RESTORED THROUGH ACCEPTANCE OF (1) AN OBLITERATED EVIDENCE LOCATION, OR (2) A FOUND PERPETUATED LOCATION?

(2) A FOUND PERPETUATED LOCATION

(G&H) WAS THE CORNER REESTABLISHED THROUGH LOST CORNER PROPORTIONATE METHODS? IF SO, SHOW THE METHOD, INCLUDING THE DIRECTIONS AND DISTANCES TO OTHER PUBLIC LAND SURVEY CORNERS USED AS EVIDENCE OR USED FOR PROPORTIONING IN DETERMINING THE CORNER LOCATION.

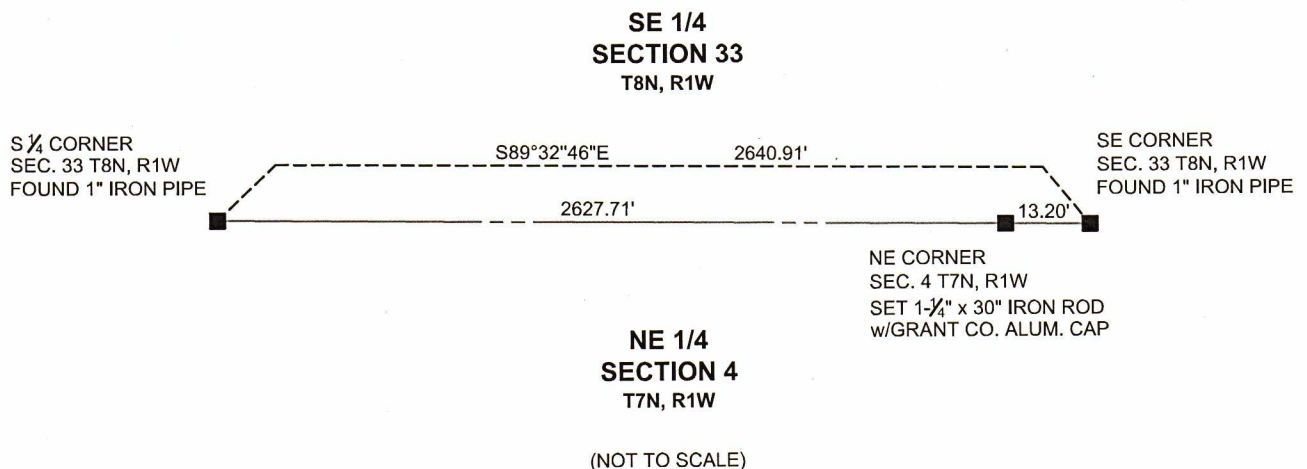
N/A

CORNER HISTORY

ORIGINAL GOVERNMENT CORNER ESTABLISHED BY SYLVESTER SIBLEY IN THE FIRST QUARTER OF 1833.

IN A SURVEY DATED 8 MARCH 1880, JOEL BARBER MAKES NOTE OF THE SENIOR CORNER AT THIS LOCATION AS BEING "WELL ESTABLISHED."

IN A TIE SHEET DATED 25 SEPTEMBER 1996, SEAN M. WALSH ACCEPTED A 1" IRON PIPE SET BY TERRY CORNELL AT THE SOUTHEAST CORNER OF SECTION 33, T8N, R1W.



AFFIX LAND SURVEYOR SEAL

(I) I, JAY P. ADAMS, P.L.S. - 2879, CERTIFY THAT THE CORNER LOCATION SHOWN ON THIS RECORD WAS DETERMINED BY ME OR UNDER MY DIRECTION AND CONTROL AND THAT THIS U.S. PUBLIC LAND SURVEY MONUMENT RECORD IS CORRECT AND COMPLETE TO THE BEST OF MY KNOWLEDGE AND BELIEF.

SIGNATURE

11 MARCH 2016
DATE

