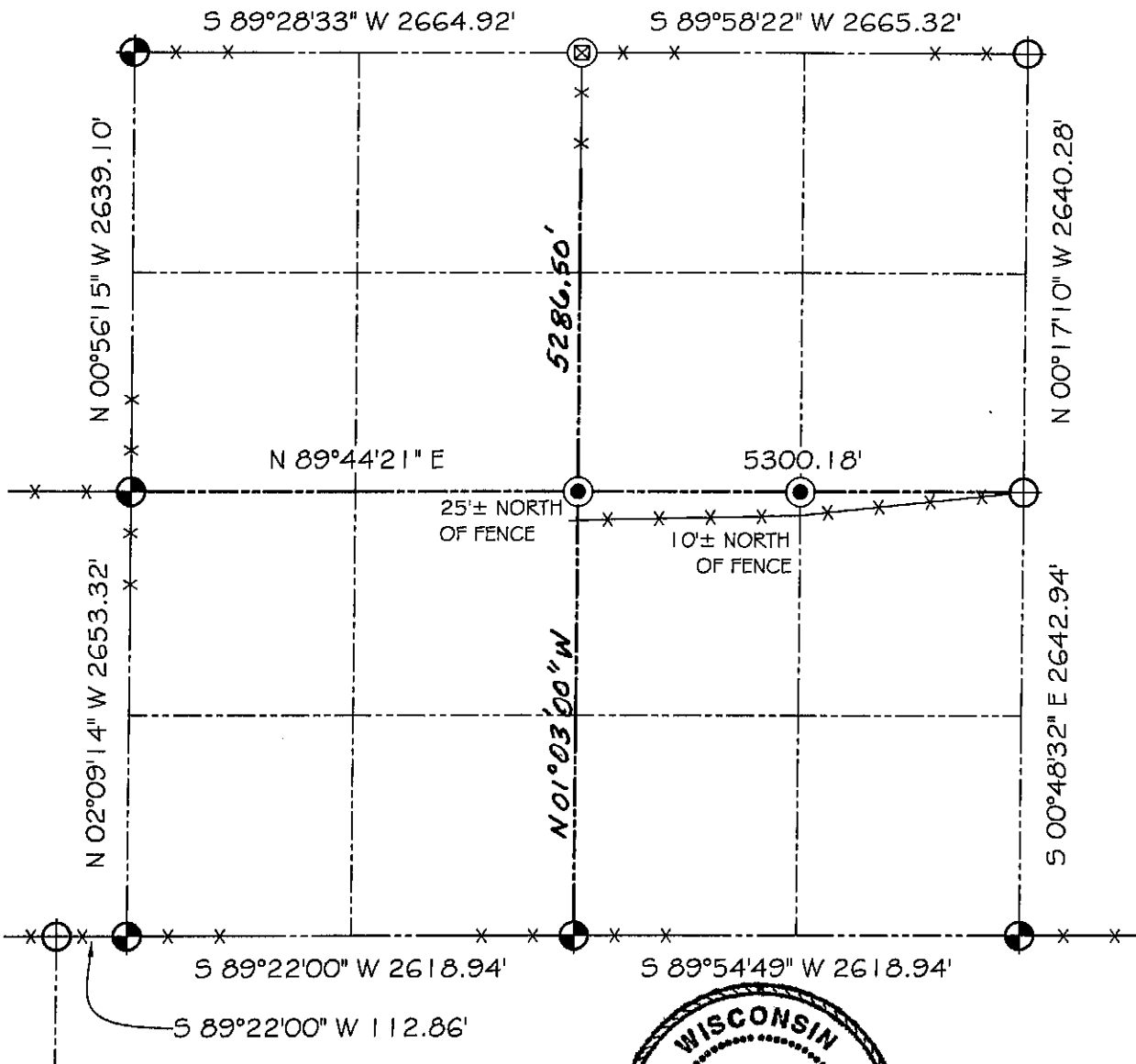


GRANT COUNTY SECTION SUMMARY

33 - 6N - 6W
 SECTION TOWN RANGE



LEGEND

- NO. 8 X 30" REBAR SET WITH GRANT COUNTY ALUMINUM CAP
- NO. 6 X 24" REBAR SET WITH YELLOW PLASTIC CAP
- NO. 6 REBAR FOUND
- NO. 6 REBAR WITH ALUMINUM CAP FOUND

NOTE:

Relationships of all section corners to other section corners shall be shown hereon by bearing and distance or grid coordinates
Show or describe bearing reference



BEARINGS REFERENCED TO THE NORTH LINE OF THE NORTHEAST 1/4 OF SECTION 33, WHICH IS ASSUMED TO BEAR S 89°58'22" W.