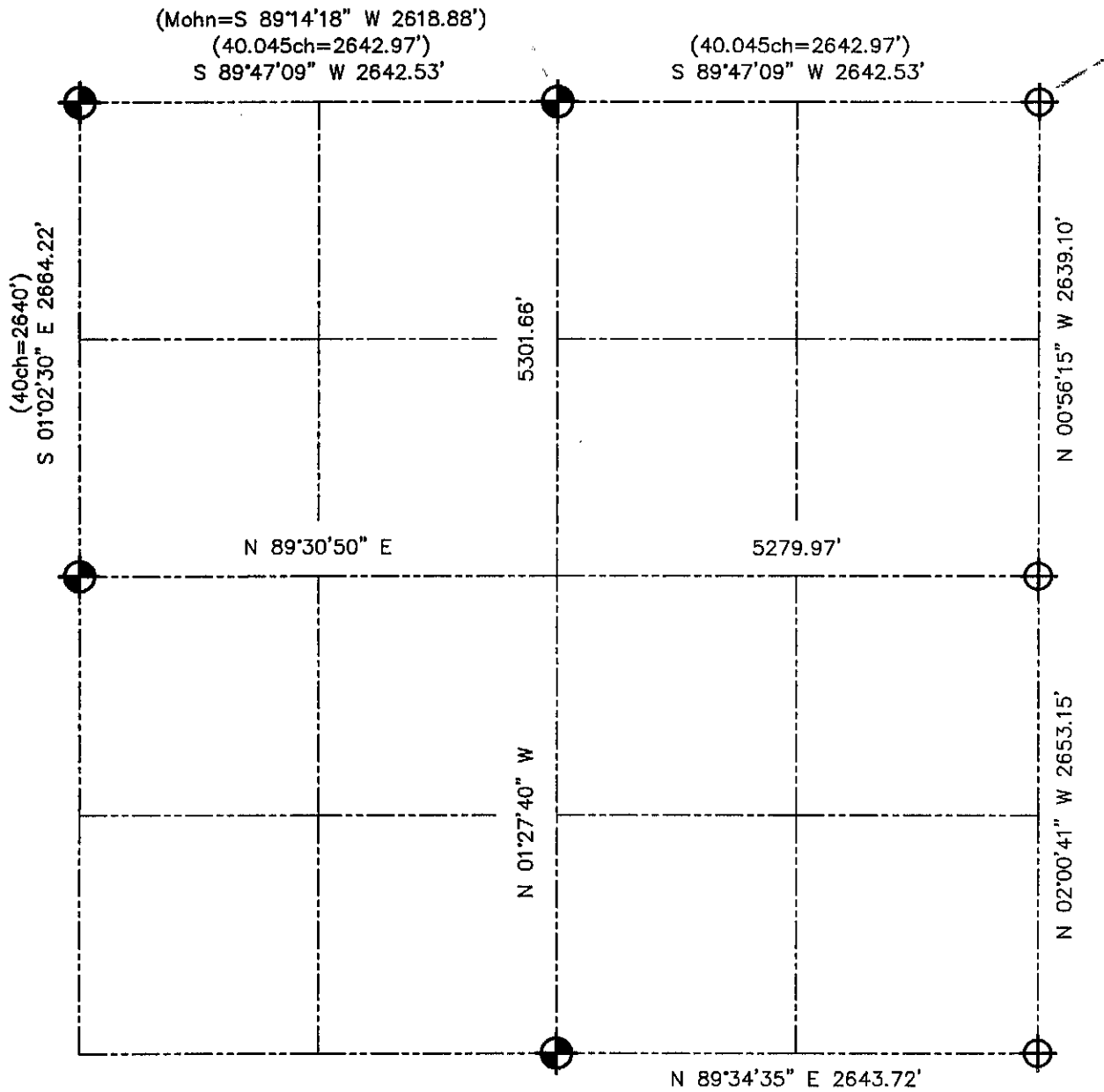




U.S. PUBLIC LAND SURVEY MONUMENT RECORD - GRANT COUNTY, WI
 Summary of Section 32, Town 6 North Range 6 West, Town of Wyalusing

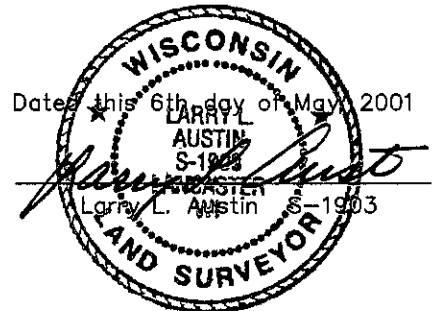


LEGEND

-  NUMBER 8 x 30" REBAR SET WITH GRANT COUNTY ALUMINUM CAP
-  NUMBER 8 REBAR FOUND WITH GRANT COUNTY ALUMINUM CAP
- () RECORDED AS



Relationship of all section corners to other section corners shall be shown hereon by bearing and distance or grid coordinates. Bearing reference shown below.



Bearings referenced to the East-West 1/4 line of Section 32, which is assumed to bear N 89°30'50" E.

SKETCH NOT TO SCALE