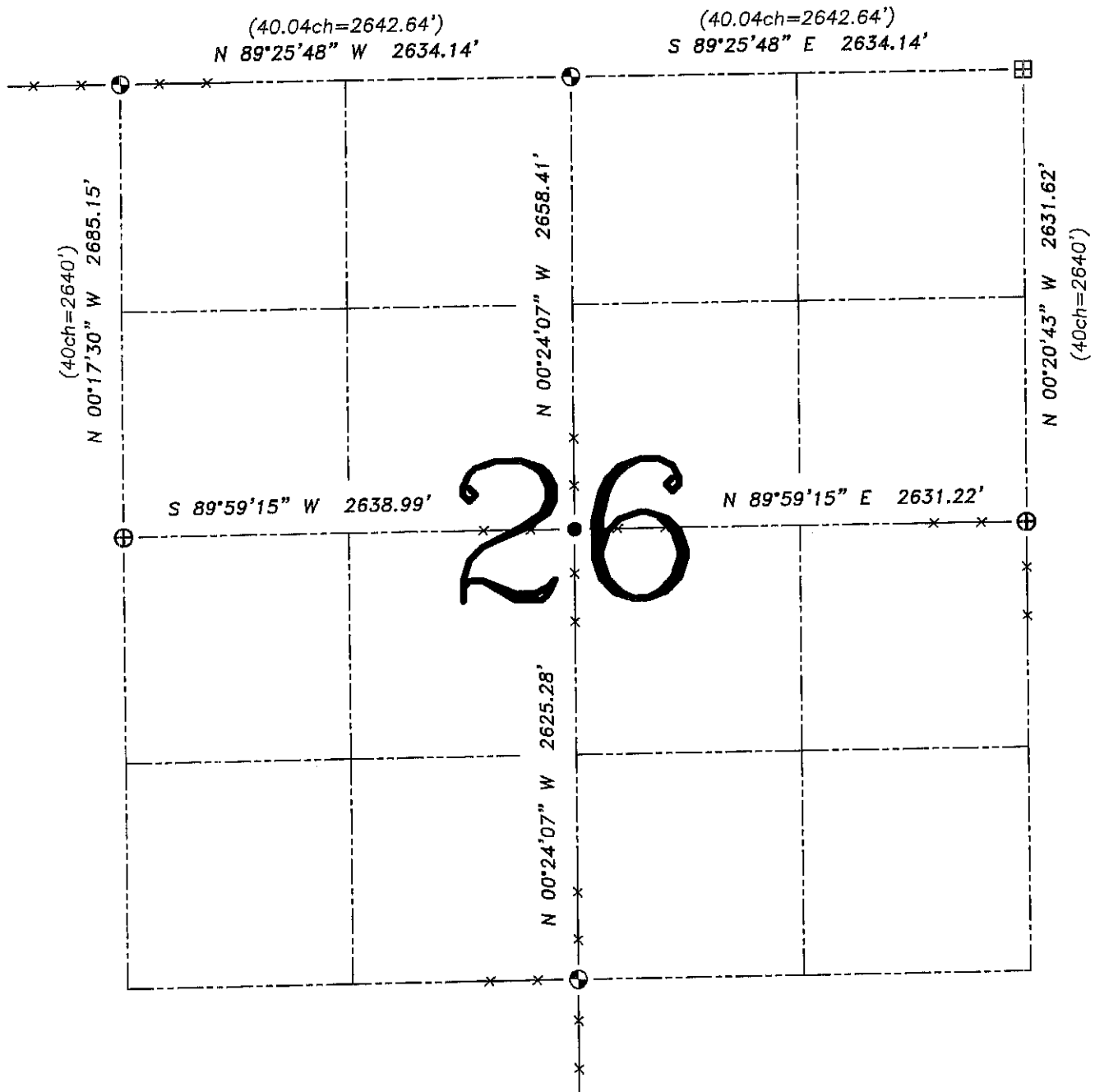


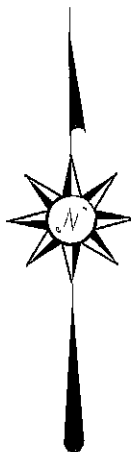
**U.S. PUBLIC LAND SURVEY MONUMENT RECORD – GRANT COUNTY, WI**

**Summary of Section 26, Town 6 North, Range 6 West, Town of Wyalusing**



**LEGEND**

- ⊕ No. 8 rebar found with Grant County Aluminum Cap
- ⊙ No. 8 x 30" rebar set with Grant County Aluminum Cap – wt=2.67#/l.f.
- No. 6 x 24" rebar set with cap – wt=1.50 #/l.f.
- ⊞ Bernsten Cast Aluminum Monument found
- ( ) Recorded as
- x— Approximate location of existing fence



Relationship of all section corners to other section corners shall be shown hereon by bearing and distance or grid coordinates. Bearing reference shown below.

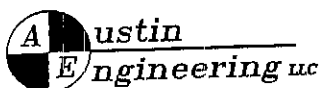
Dated this 10th day of December, 2005

*Larry L. Austin*  
 Larry L. Austin S-1903



Bearings referenced to the South-North Quarter line of Section 26, which is assumed to bear N 00°24'07" W.

SKETCH NOT TO SCALE



4211 HWY 81 E, LANCASTER, WI 53813  
 PHONE 608-723-6363 FAX 608-723-6702

JOB NUMBER: 04S217  
 FIELDBOOK: 2507  
 G:\T6NR6W\18  
 H:\TIE\T6NR6W\26SUM

DRAWN BY: ML DIGMAN  
 APPROVED: LL AUSTIN