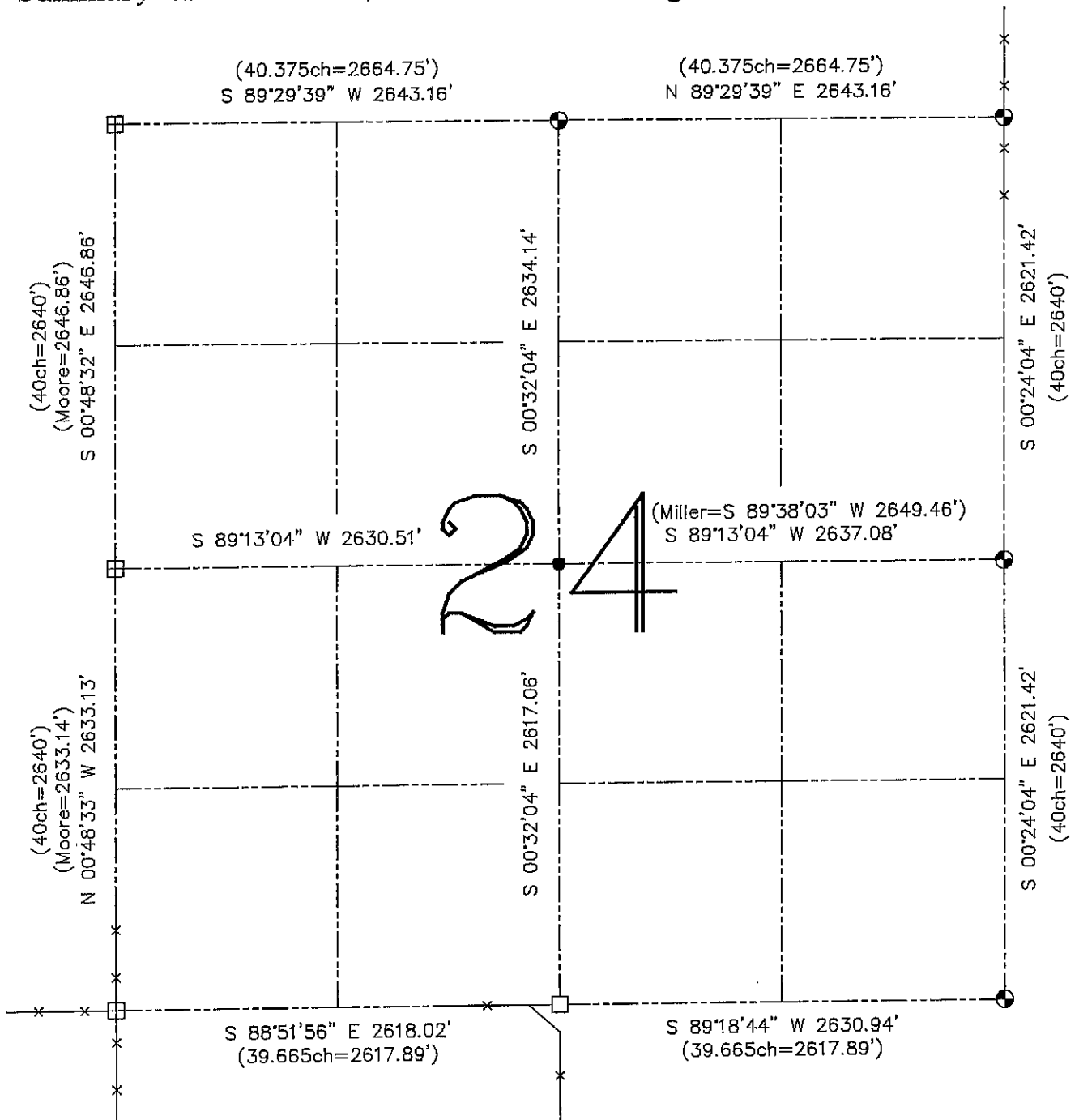


U.S. PUBLIC LAND SURVEY MONUMENT RECORD – GRANT COUNTY, WI

Summary of Section 24, Town 6 North, Range 6 West, Town of Wyalusing

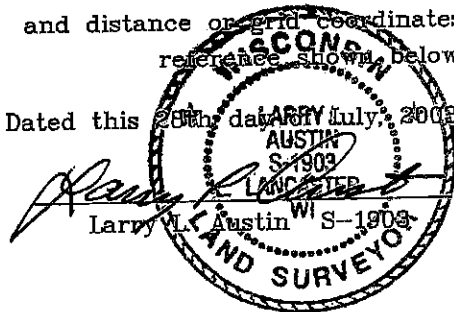


LEGEND

- No. 8 x 30" rebar set with Grant County Aluminum Cap – wt=2.67#/l.f.
- No. 6 x 24" rebar set with cap – wt=1.50 #/l.f.
- No. 10 rebar found
- ▣ Aluminum Monument found
- () Recorded as
- x— Approximate location of existing fence

Relationship of all section corners to other section corners shall be shown hereon by bearing and distance or grid coordinates. Bearing reference shown below.

Dated this 28th day of July, 2008



Bearings referenced to the East-West Quarter line of this Section, which is assumed to bear as shown hereon.

SKETCH NOT TO SCALE

AUSTIN ENGINEERING, LLC

4211 HWY 81 EAST, LANCASTER, WI 53813
PHONE 608-723-6363 FAX 608-723-6702

FIELDBOOK: TDS RNGR, 2307,
G:\T6NR6W\18 2317
H:\TIE\T6NR6W\24SUM
JOB NUMBER 03S122

CREW: BS-SB-SA-BD
DRAWN BY: SW AUSTIN
APPROVED: LL AUSTIN