

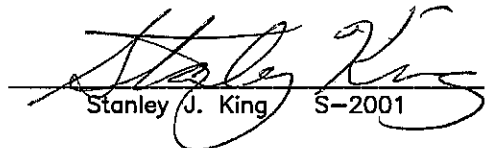
CERTIFIED LAND CORNER

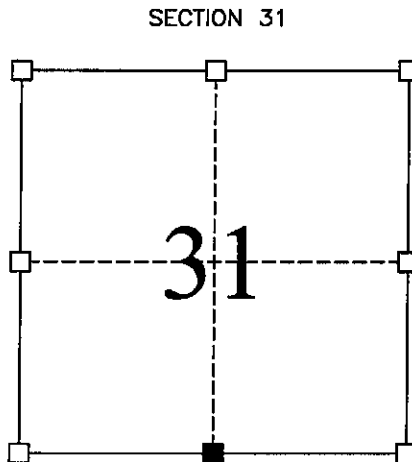
STATE OF WISCONSIN
COUNTY OF GRANT

CERTIFICATE

I, Stanley J. King, do hereby certify that the corner location of this record was determined by me and/or under my direct supervision and that this U.S. public land survey monument record is correct and complete to the best of my knowledge and belief.

Dated this 3rd day of March, 2002


Stanley J. King S-2001



■ = Corner Location
T6N R6W
Town of: WYALUSING

Seal:

History of original corner establishment:

Original corner was set in 1832
In 1993 Richard Marks set the Northwest corner and the North One-Quarter of section 6.

Description of corner evidence found:

I found the Northwest corner, the North One-Quarter, and the Northeast corner of Section 6 and set the South One-Quarter of Section 31 at the propoportistante offset. This was verified using EDM methods.

Description of corner and witness monuments, references, and accessories used to perpetuate the original or re-established location of this corner:

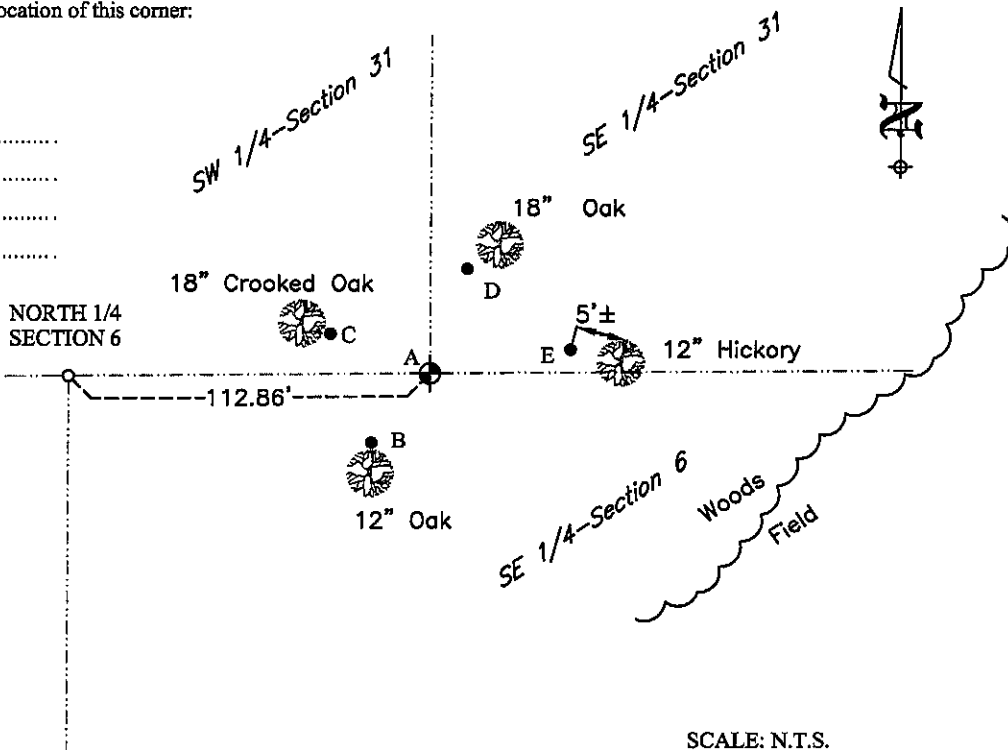
Witnesses to corner location:

Daniel J. Dreesens
Kathie A. Kobbervig
.....
.....

LEGEND

- ⊕ = SECTION CORNER (GRANT COUNTY ALUM. MONUMENT)
- = TIE BAR
- = 3/4" BAR FOUND

(A-B) = S 39°58'28" W 28.26'
(A-C) = N 68°21'39" W 33.46'
(A-D) = N 19°21'32" E 34.70'
(A-E) = N 80°15'54" E 44.25'



SCALE: N.T.S.



BLACKHAWK
ENGINEERING, Ltd.

Civil & Municipal Engineers and Building Design
2 INSIGHT DRIVE OFFICE PHONE: (608) 348-4433
PLATTEVILLE, WISCONSIN FAX: (608) 348-4449

SURVEY CREW: DJD, KAK
DRAWN BY: DJD
DATE: MARCH 3, 2002
FILE: F:\ACAD12\2001\01-123\TIESHEET\WYALUSING(SOUTH31).DWG