

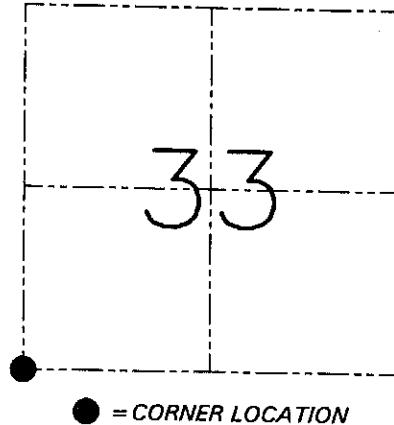
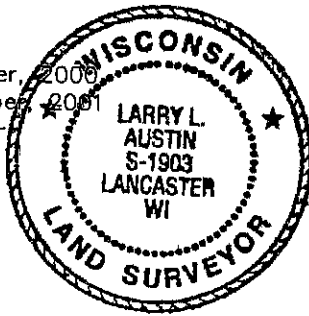
**U.S. PUBLIC LAND SURVEY MONUMENT RECORD - GRANT COUNTY, WI**  
 Section 33, Town 6 North Range 6 West, Town of Wyalusing

**CERTIFICATE**

I, Larry L. Austin, do hereby certify that the corner location on this record was determined by me and/or under my direct supervision and that this U.S. public land survey monument record is correct and complete to the best of my knowledge and belief.

Dated this 8th day of September, 2008  
 Revised this 7th day of November, 2008

*Larry L. Austin*  
 Larry L. Austin S-1903



**HISTORY OF CORNER ESTABLISHMENT**

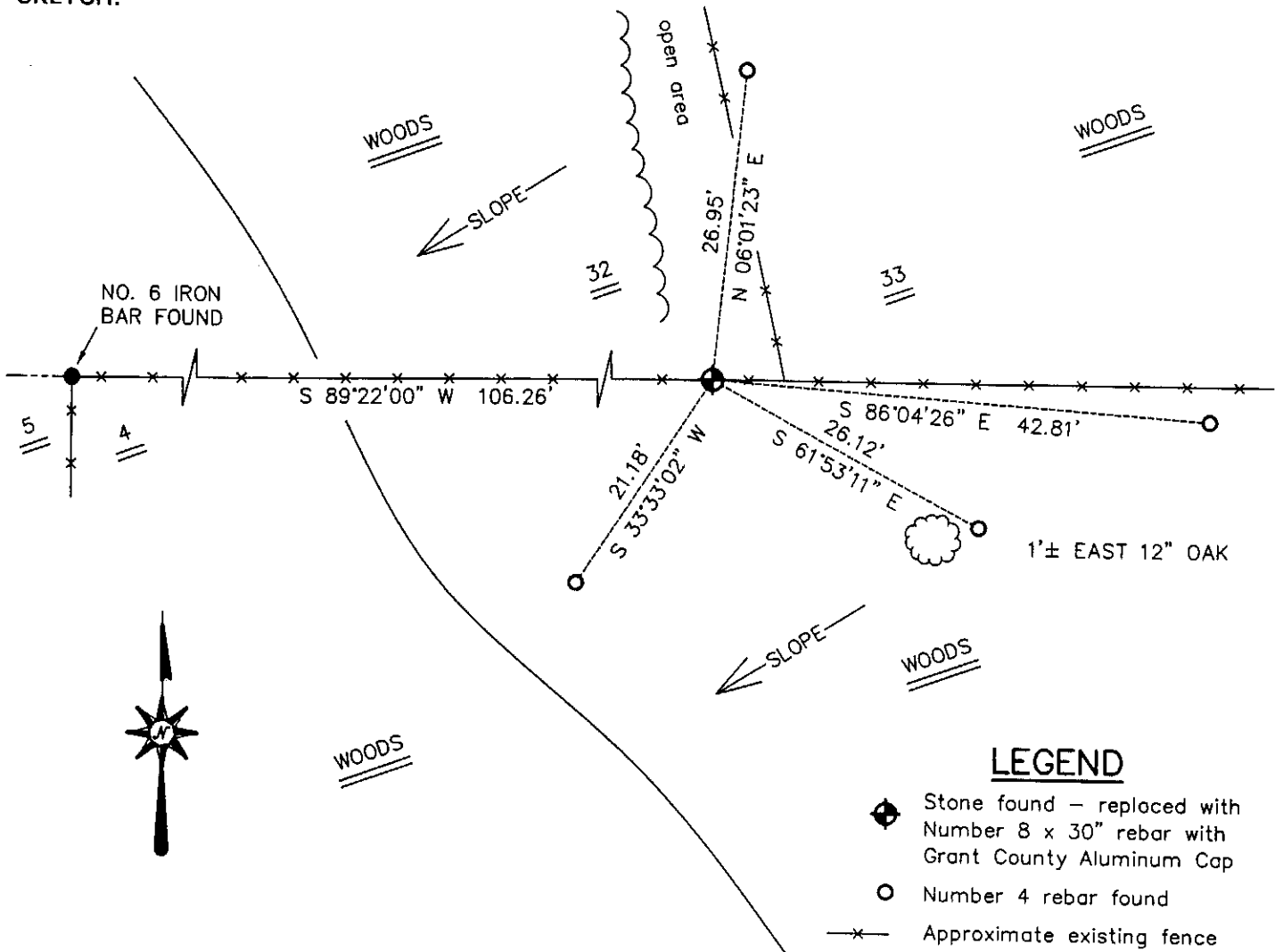
Corner was originally set in 1832 by Sibley.  
 In 1991 Richard Marks found an existing stone.

**DESCRIPTION OF CORNER EVIDENCE FOUND**

I found the existing Stone and replaced it with a No 8 iron bar with cap. Verified this location using EDM & GPS methods.

**DESCRIPTION OF CORNER AND WITNESS MONUMENTS, references and accessories used to perpetuate the original or re-established location of this corner. Witnesses to the corner location Bobby Sedgwick & Shelby Blindert**

**SKETCH:**



**LEGEND**

- ◆ Stone found - replaced with Number 8 x 30" rebar with Grant County Aluminum Cap
- Number 4 rebar found
- x— Approximate existing fence

SKETCH NOT TO SCALE

**AUSTIN ENGINEERING, LLC**

4211 HWY 81 EAST, LANCASTER, WI 53813  
 PHONE 608-723-6363 FAX 608-723-6702

FIELDBOOK: SDR33, 20-42  
 G: \T6NR6W\33  
 C: \SWA\TIE\T6NR6W\129  
 CREW: BS-SB-SA-TF

DRAWN BY: SW AUSTIN  
 APPROVED: LL AUSTIN

**CORNER NUMBER 129**

# GRANT COUNTY CERTIFIED LAND CORNER

CORNER NUMBER 129

**CERTIFICATE:**

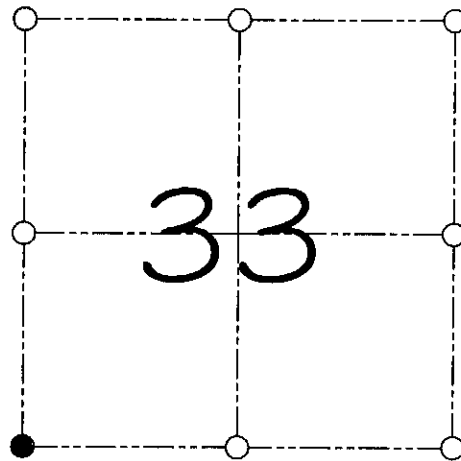
I, Larry L. Austin, do hereby certify that on the 5th day of September, 2000, I found evidence of the Southwest corner of Section 33, Town 6 North, Range 6 West, of the 4th Principal Meridian, and I re-established said corner according to the Wisconsin statutes as shown and described hereon.

Dated this 8th day of September, 2000

*Larry L. Austin*  
Larry L. Austin S-1903



SEAL



● = CORNER LOCATION

SOUTHWEST CORNER OF  
SECTION 33, T 6 N R 6 W  
TOWN OF WYALUSING

**HISTORY OF ORIGINAL CORNER ESTABLISHMENT:**

Corner was originally set in 1832 by Sibley.  
In 1991 Richard Marks found an existing stone.

**DESCRIPTION OF CORNER EVIDENCE FOUND:**

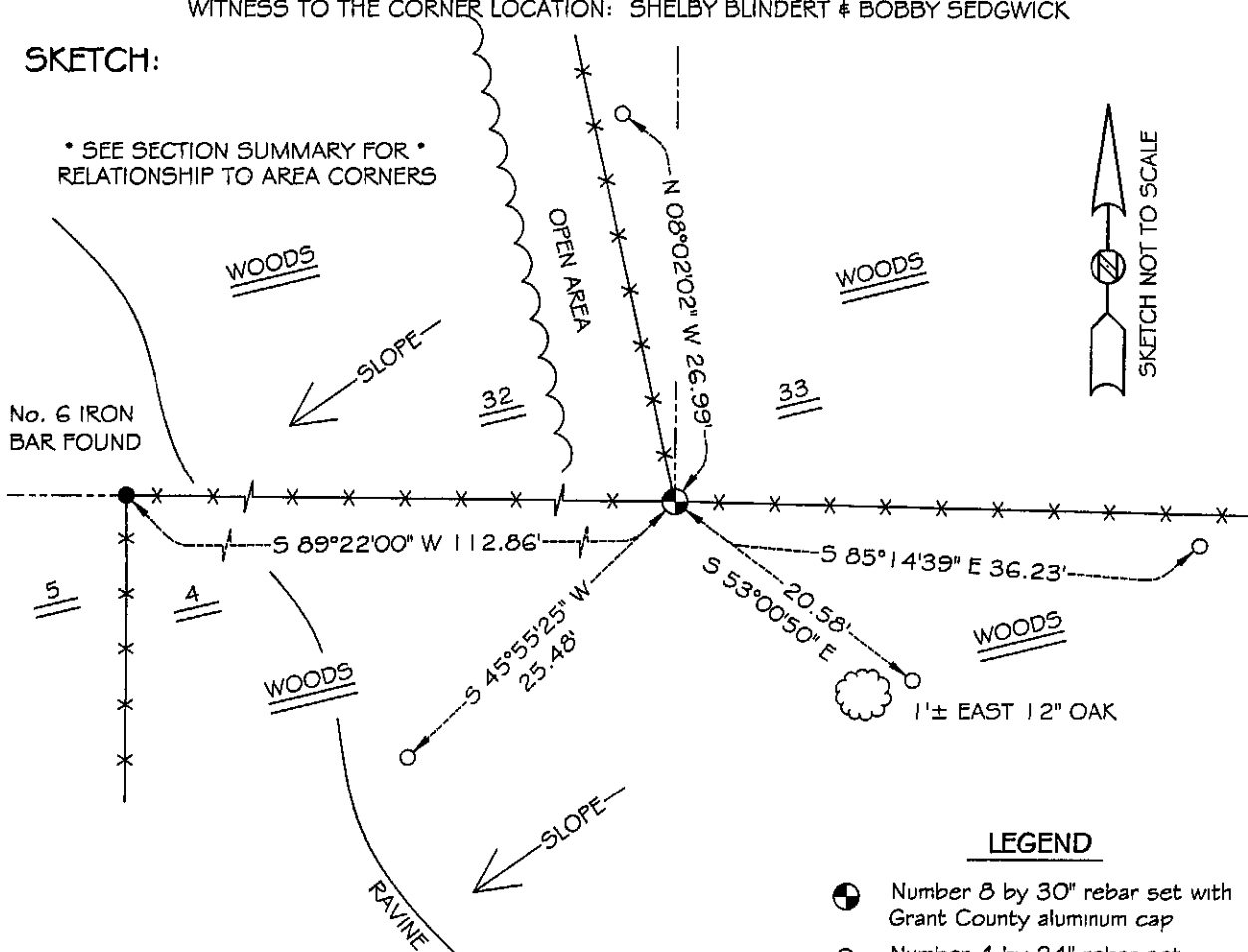
I accepted Mark's location and set a 1" x 30" iron bar with aluminum cap at this location. Verified this location using E.D.M. & G.P.S. methods.

**DESCRIPTION OF CORNER AND WITNESS MONUMENTS, references and accessories used to perpetuate the original or re-established location of this corner**

WITNESS TO THE CORNER LOCATION: SHELBY BLINDERT & BOBBY SEDGWICK

**SKETCH:**

\* SEE SECTION SUMMARY FOR \*  
RELATIONSHIP TO AREA CORNERS



LEGEND

- Number 6 by 30" rebar set with Grant County aluminum cap
- Number 4 by 24" rebar set with red plastic cap
- X- Existing fence location