

GRANT COUNTY CERTIFIED LAND CORNER

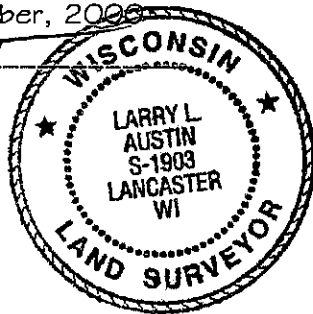
CORNER NUMBER 127

CERTIFICATE:

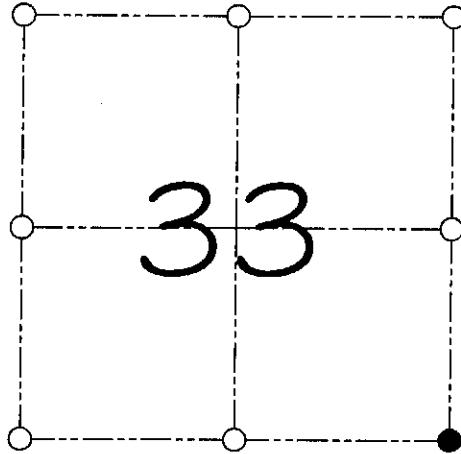
I, Larry L. Austin, do hereby certify that on the 5th day of September, 2000, I found no evidence of the Southeast corner of Section 33, Town 6 North, Range 6 West, of the 4th Principal Meridian, and I re-established said corner according to the Wisconsin statutes as shown and described hereon.

Dated this 8th day of September, 2000

Larry L. Austin
Larry L. Austin S-1903



SEAL



● = CORNER LOCATION

SOUTHEAST CORNER OF SECTION 33, T 6 N R 6 W TOWN OF WYALUSING

HISTORY OF ORIGINAL CORNER ESTABLISHMENT:

Corner was originally set in 1832 by Sibley.
No other record of the corner was found.

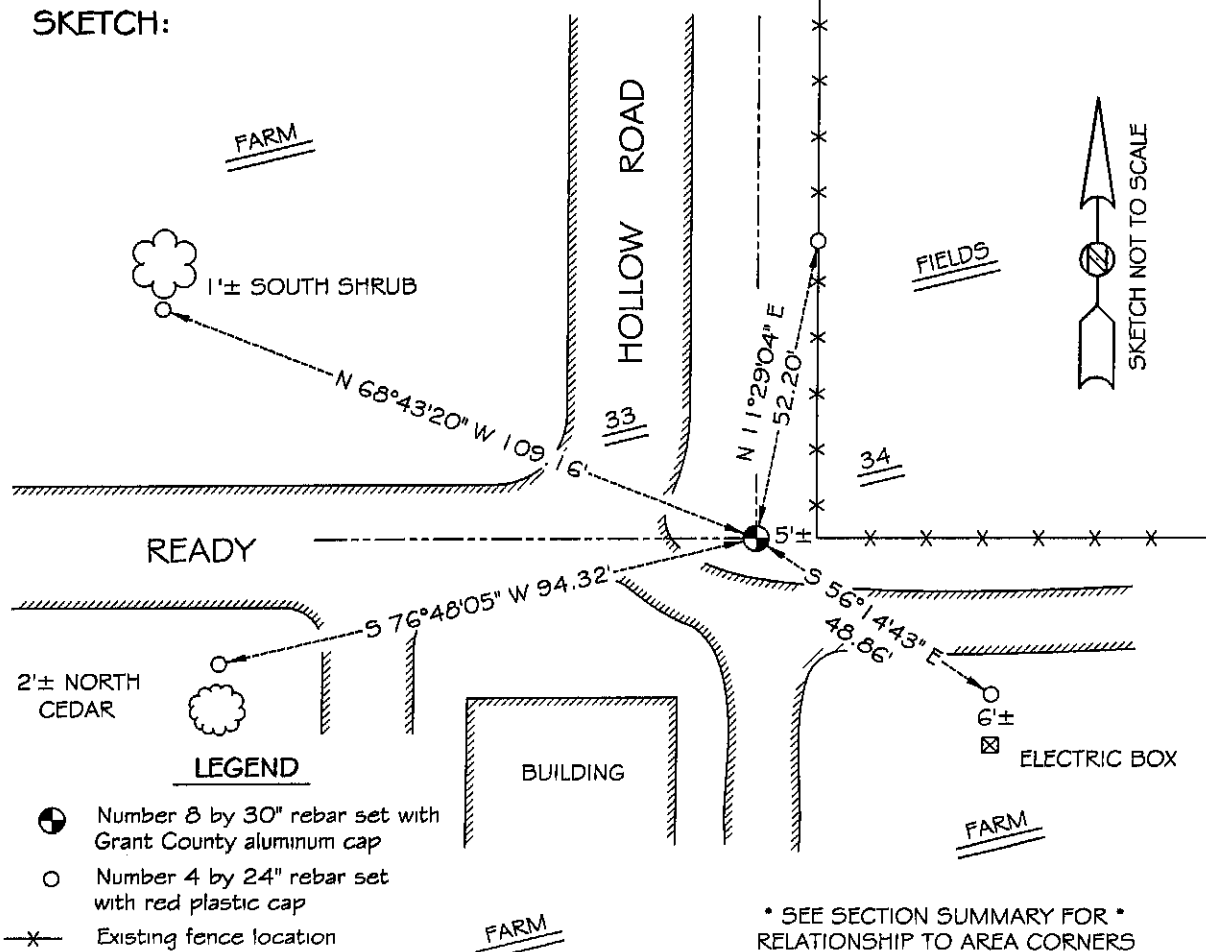
DESCRIPTION OF CORNER EVIDENCE FOUND:

I reset the corner online with a fence to the East. The Easting was established proportionately between the occupied South 1/4 of Section 34 and monumented South 1/4 of Section 33. Verified this location using E.D.M. & G.P.S. methods.

DESCRIPTION OF CORNER AND WITNESS MONUMENTS, references and accessories used to perpetuate the original or re-established location of this corner

WITNESS TO THE CORNER LOCATION: SHELBY BLINDERT & BOBBY SEDGWICK

SKETCH:



* SEE SECTION SUMMARY FOR *
RELATIONSHIP TO AREA CORNERS