

66126

U.S. PUBLIC LAND SURVEY MONUMENT RECORD - GRANT COUNTY, WI

Section 34, Town 6 North Range 6 West, Town of Wyalusing (a)

NOTE: This form is intended and designed to fulfill all requirements of the Wisconsin Administrative Code Chapter A-E 7.08, U.S. Public Land Survey Monument Record (3) (a) (b) (c) (d) (e) (f) (g) (h) (i).

CERTIFICATE: (i)

I, Aaron J. Austin, Wisconsin Professional Land Surveyor, do hereby certify that the corner location on this record was determined by me and/or under my direct supervision and that this U.S. Public Land Survey Monument Record is correct and complete to the best of my knowledge and belief.

Dated this 30th day of September, 2022.

Aaron J. Austin

Aaron J. Austin, S-2922



Grant County Coordinates:
NAD 83 (2011)
Northing: 559,206.47
Easting: 722,295.26

HISTORY OF CORNER ESTABLISHMENT:

Original corner was set in 1832 by Sibley.
Larry Austin set an 1" Rebar with a Grant County Aluminum Cap and prepared a Survey Monument Record dated 9/18/2001.

DESCRIPTION OF CORNER EVIDENCE FOUND: (b) (f) (g) (h)

I found the 1" Rebar with the Grant County Cap and one existing witness monument Larry set. I set three witness corners after I verified the Monument's location with G.P.S. and E.D.M. methods.

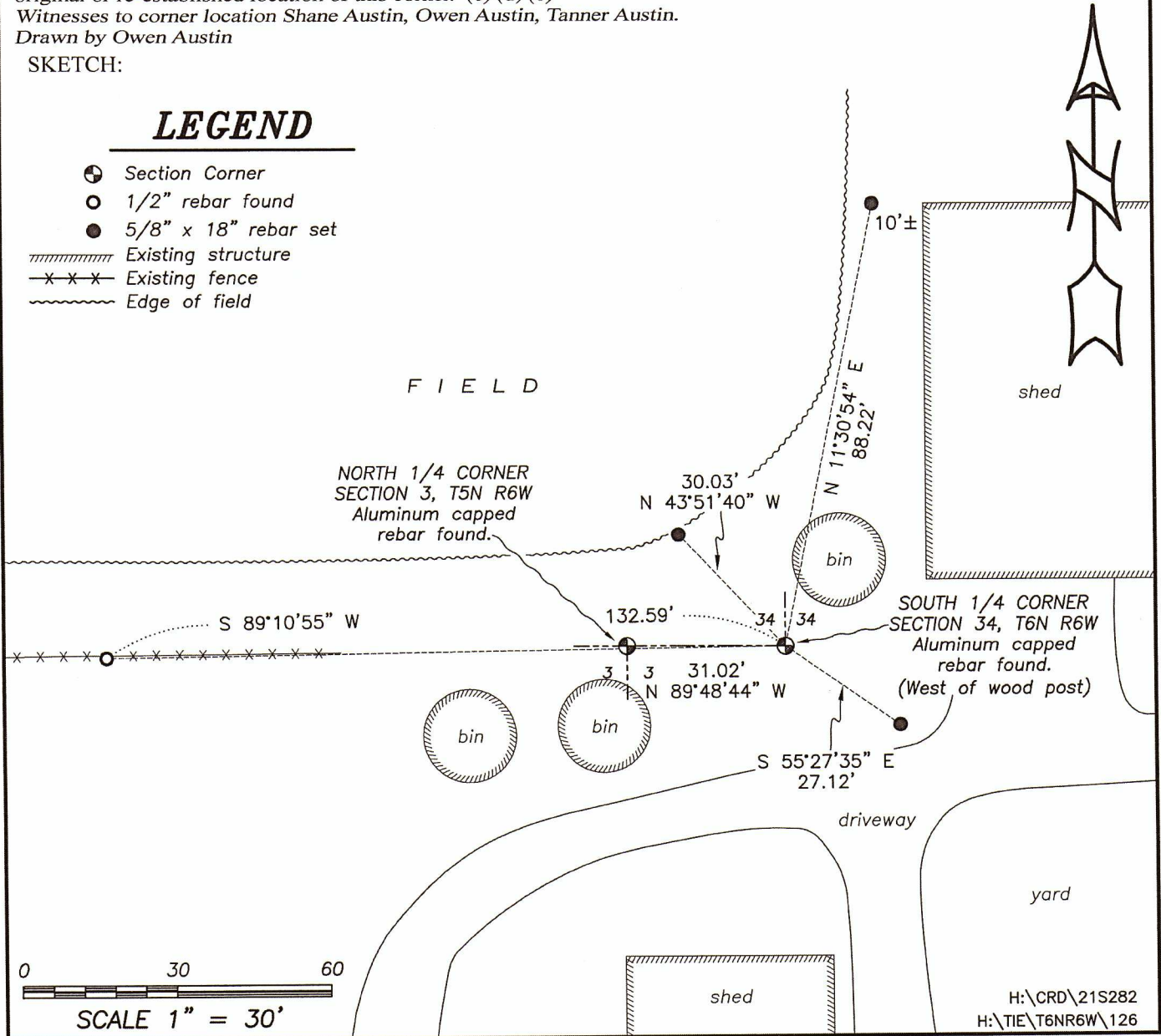
DESCRIPTION OF CORNER AND WITNESS MONUMENTS, references and accessories used to perpetuate the original or re-established location of this corner. (c) (d) (e)

Witnesses to corner location Shane Austin, Owen Austin, Tanner Austin.
Drawn by Owen Austin

SKETCH:

LEGEND

- ⊕ Section Corner
- 1/2" rebar found
- 5/8" x 18" rebar set
- ▨ Existing structure
- x-x-x- Existing fence
- ~~~~~ Edge of field



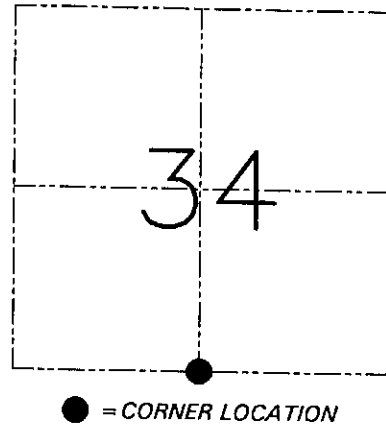
U.S. PUBLIC LAND SURVEY MONUMENT RECORD - GRANT COUNTY, WI
 Section 34, Town 6 North Range 6 West, Town of Wyalusing

CERTIFICATE

I, Larry L. Austin, do hereby certify that the corner location on this record was determined by me and/or under my direct supervision and that this U.S. public land survey monument record is correct and complete to the best of my knowledge and belief.

Dated this 18th day of September, 2001

Larry L. Austin
 Larry L. Austin S-1903



HISTORY OF CORNER ESTABLISHMENT

Corner was originally set in 1832 by Sibley.
 No other record of the corner was found.

DESCRIPTION OF CORNER EVIDENCE FOUND

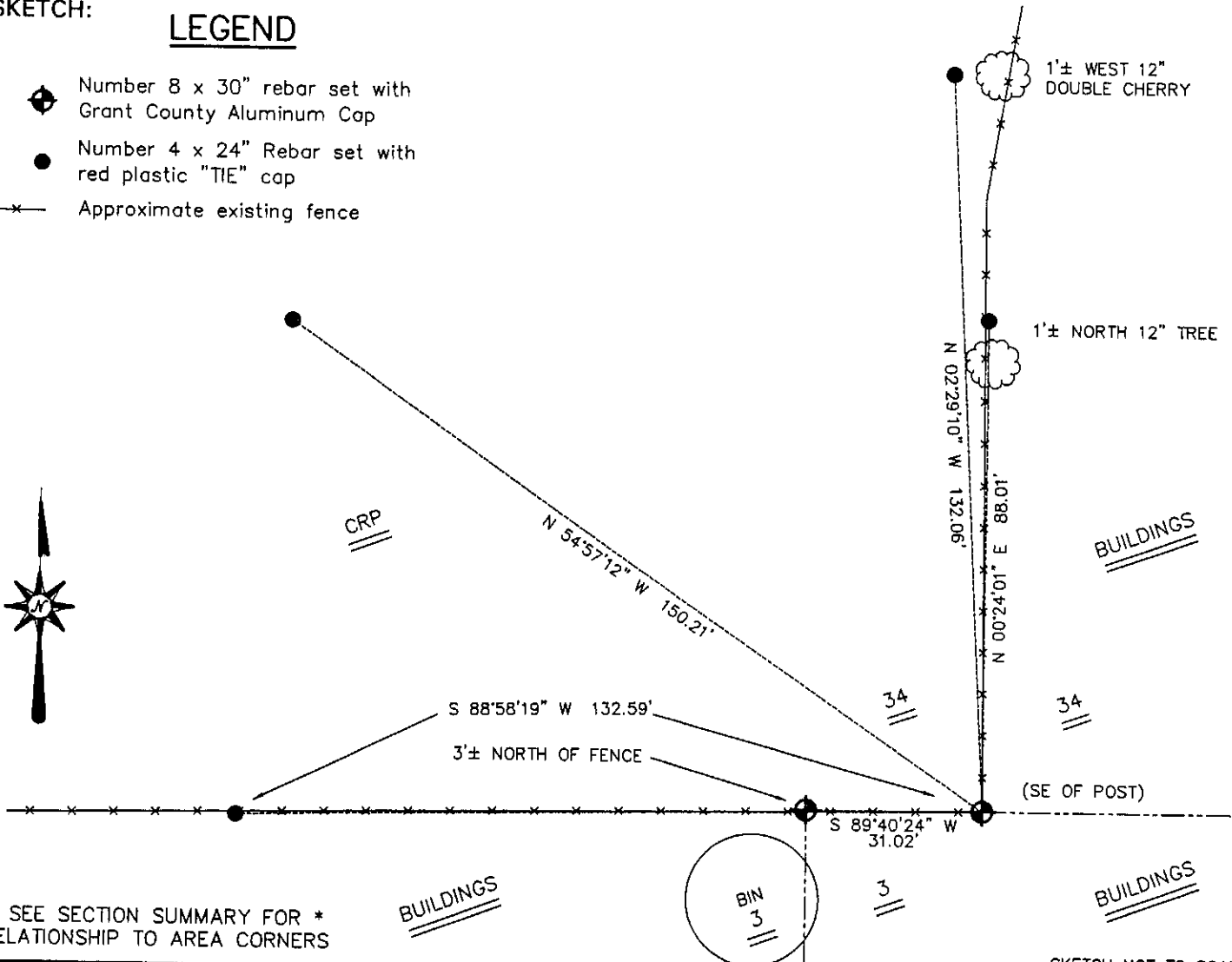
I reset the corner at an occupied location.
 I verified this location using EDM & GPS methods.

DESCRIPTION OF CORNER AND WITNESS MONUMENTS, references and accessories used to perpetuate the original or re-established location of this corner. Witnesses to the corner location Bobby Sedgwick & Shane Austin & Tim Fauver

SKETCH:

LEGEND

- ◆ Number 8 x 30" rebar set with Grant County Aluminum Cap
- Number 4 x 24" Rebar set with red plastic "TIE" cap
- x— Approximate existing fence



* SEE SECTION SUMMARY FOR *
 RELATIONSHIP TO AREA CORNERS

AUSTIN ENGINEERING, LLC
 4211 HWY 81 EAST, LANCASTER, WI 53813
 PHONE 608-723-6363 FAX 608-723-6702

FIELDBOOK: SDR33, 2042
 G: \T6NR6W\33A
 C: \SWA\TIE\T5NR6W\03
 CREW: BS-SB-SA-TF

DRAWN BY: SW AUSTIN
 APPROVED: LL AUSTIN

CORNER NUMBER 126