

U.S. PUBLIC LAND SURVEY MONUMENT RECORD - GRANT COUNTY, WI

Section 35, Town 6 North Range 6 West, Town of Wyalusing (a)

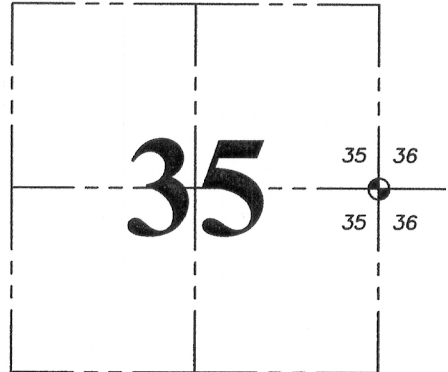
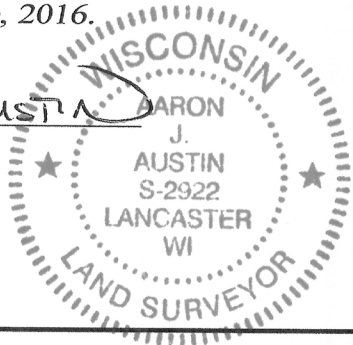
NOTE: This form is intended and designed to fulfill all requirements of the Wisconsin Administrative Code Chapter A-E 7.08, U.S. Public Land Survey Monument Record (3) (a) (b) (c) (d) (e) (f) (g) (h) (i).

CERTIFICATE: (i)

I, Aaron J. Austin, Wisconsin Professional Land Surveyor, do hereby certify that the corner location on this record was determined by me and/or under my direct supervision and that this U.S. Public Land Survey Monument Record is correct and complete to the best of my knowledge and belief.

Dated this 16th day of June, 2016.

Aaron J. Austin
 Aaron J. Austin, S-2922



⊙ = CORNER LOCATION

Grant County Coordinates:
 WISCORS NAD 83 (2011)
 Northing: 561851.84
 Easting: 730244.06

HISTORY OF CORNER ESTABLISHMENT:

- 1832-Robert Clark set the original corner.
- 1854-Struntz tied to the corner on a Survey filed in Book C, Page 39
- 1881-J.C. Scott tied to the corner on a survey filed in Book D, Page 86 and 87.
- 1986-Douglas Malliet tied to the corner on a survey filed in Book L, Page 247.
- 1996-Richard Marks tied to the corner on a survey filed in Book W, Page 68.
- 2008-William Bulawa tied to corner on a Survey filed in Book 23, Page 58.
- 2012-William Bulawa tied to the corner on a Survey filed in Book 30, Page 84.
- 2013-Aaron Austin tied to the corner on a Survey filed in Book 34, Page 37.

DESCRIPTION OF CORNER EVIDENCE FOUND: (b) (f) (g) (h)

Malliet set a Railroad spike at this corner according to the survey filed in Book L, Page 247 (No tie sheet found for the placement of the Railroad Spike). Richard Marks set a 3/4" rebar at this corner location according to the survey filed in Book W, Page 68. Marks also prepared a U.S. Public Land Survey Monument Record for the corner. County Highway "P" was resurfaced. I found a metal detector reading at the location I measured to the corner in 2013. I verified it's location to the corners of the Church as shown on Marks tie sheet and set a 1/2" x 4 3/4" Steel Cotton Gin Spike at the surface and 4 new witness corners. This corner location has been accepted by myself and Bulawa in previous surveys. County Coordinates were established utilizing WISCORS and G.P.S. methods.

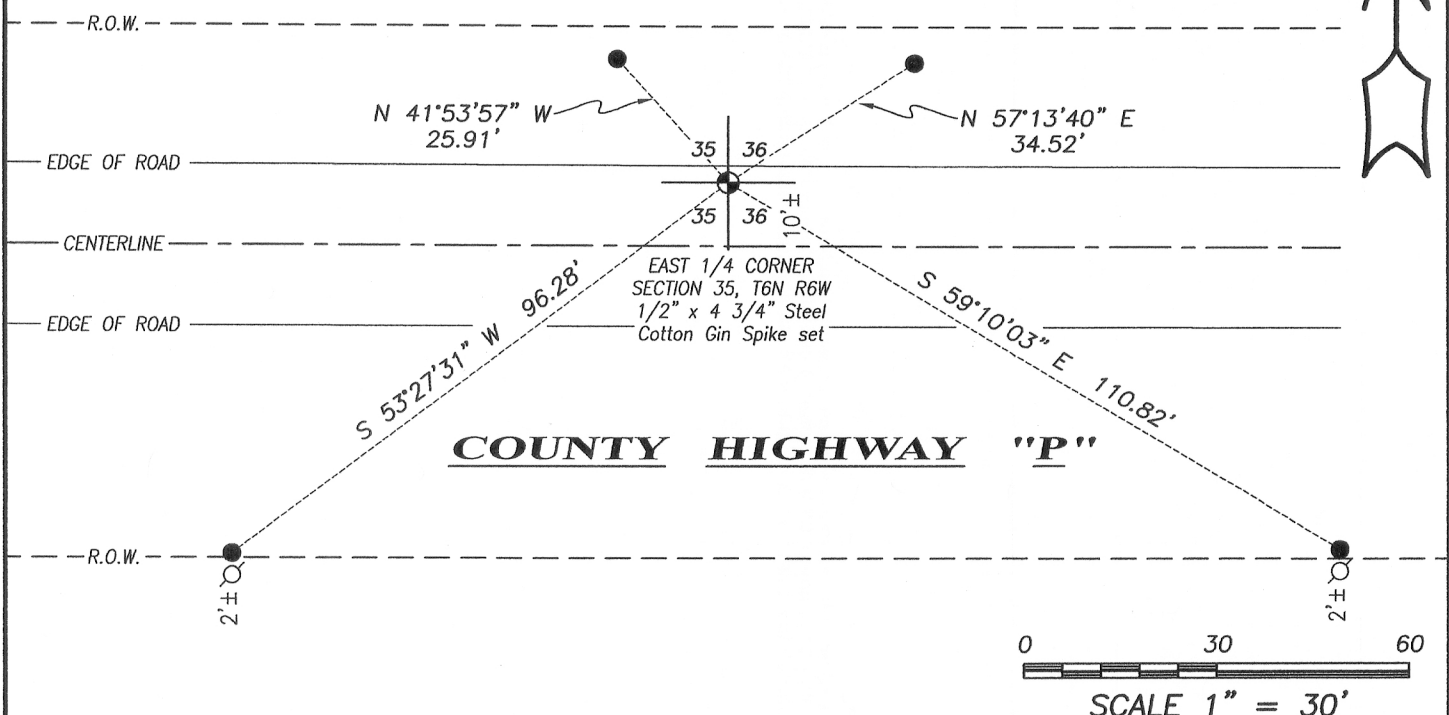
DESCRIPTION OF CORNER AND WITNESS MONUMENTS, references and accessories used to perpetuate the original or re-established location of this corner. (c) (d) (e)

Witnesses to corner location Shane Austin, Aaron Austin.

LEGEND

- ⊙ Section Corner - as designated
- 1/2" x 12" rebar set
- ⊘ Existing utility pole

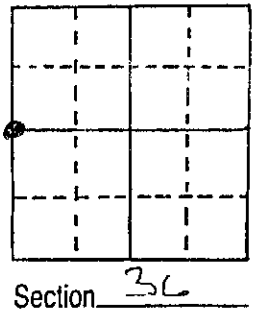
SKETCH:



U.S. PUBLIC LAND SURVEY MONUMENT RECORD

Note: This form is intended and designed to fulfill all requirements of Wisconsin Administrative Code, Chapter A-E 5.02, U.S. Public Land Survey Monument Record (3) (a) (b) (c) (d) (e) (f) (g) (h) (i). An additional sheet may be added if necessary to conform with said requirements.

(a) Corner location: Township 6 North
 Range 6 East/West
 Town/City/Village Wausau
 County Grant

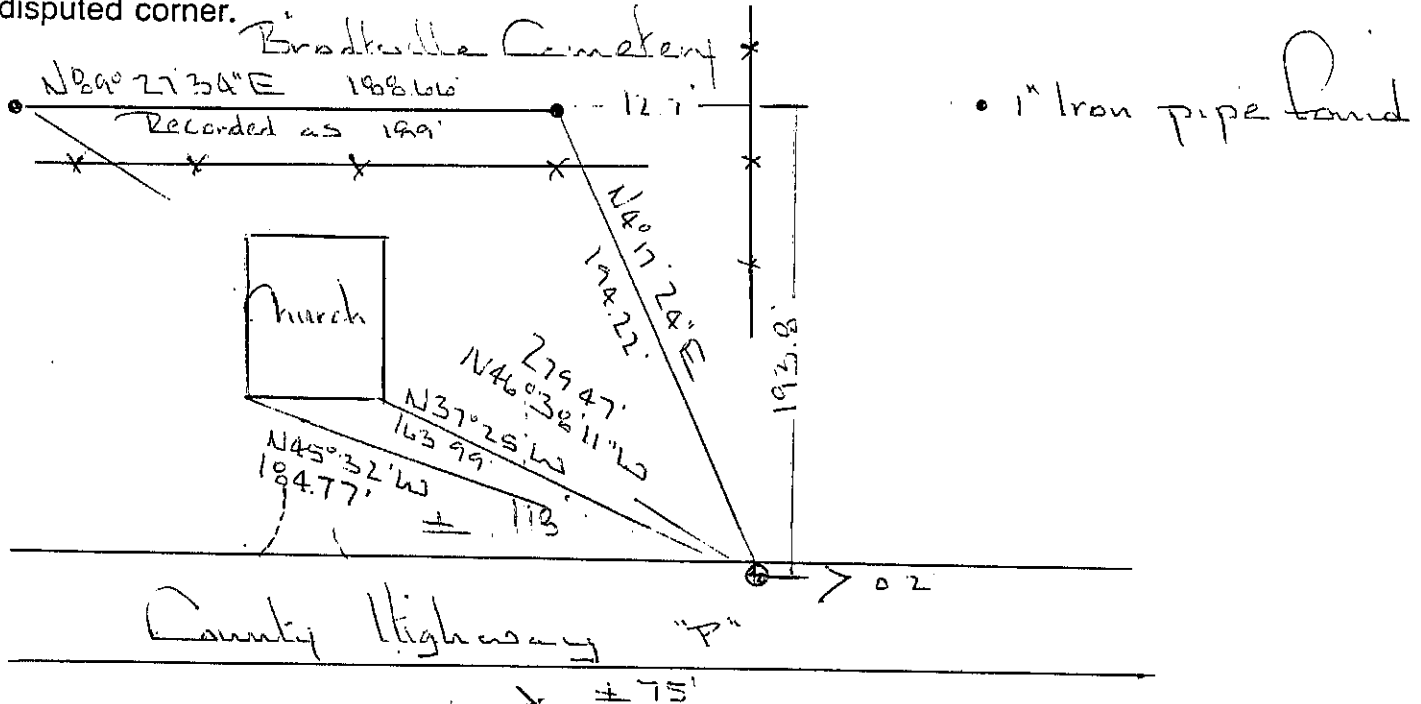


(b) (f) (g) (h) Description of monument found at this corner and if it was accepted, state all evidence (material, testimonial, occupational, plats, records, other monuments) used as a basis for accepting. If not accepted or if nothing was found, state evidence used as basis for establishing location. If reestablished through lost corner proportionate methods, indicate all monuments, distances and directions used to establish.

I reset this corner from two found iron pipes shown on the Brookville Cemetery Plat.

I set a 3/4" x 24" solid round iron rod 0.2' South of the North edge of the pavement of county highway "P"

(c) (d) (e) Plan view of corner with ties to at least 4 witness monuments. If in disagreement with previously established corner, show the distances between the two corners and also indicate the ties to the disputed corner.



(i) Richard Marks
 (type or print name) certify that the corner location on this record was determined by me or under my direction and control and that this U.S. Public Land Survey Monument Record is correct and complete to the best of my knowledge and belief.

Affix seal here

Richard Marks
 Signature Date 2/26/06