

U.S. PUBLIC LAND SURVEY MONUMENT RECORD – GRANT COUNTY, WI

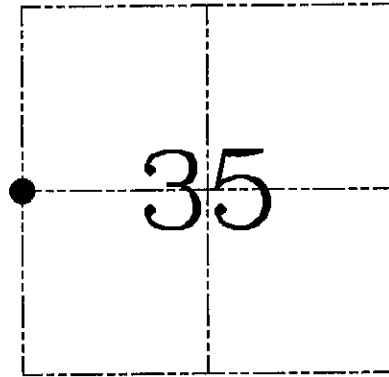
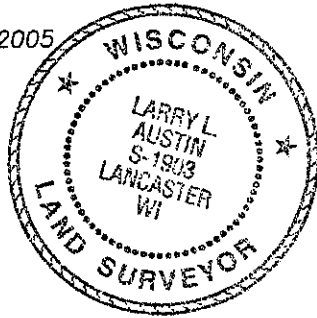
Section 35, Town 6 North Range 6 West, Town of Wyalusing

CERTIFICATE

I, Larry L. Austin, do hereby certify that the corner location on this record was determined by me and/or under my direct supervision and that this U.S. public land survey monument record is correct and complete to the best of my knowledge and belief.

Dated this 25th day of February, 2005

Larry L. Austin
Larry L. Austin S-1903



● = CORNER LOCATION

RECORDED

JAN 16 2007

HISTORY OF CORNER ESTABLISHMENT

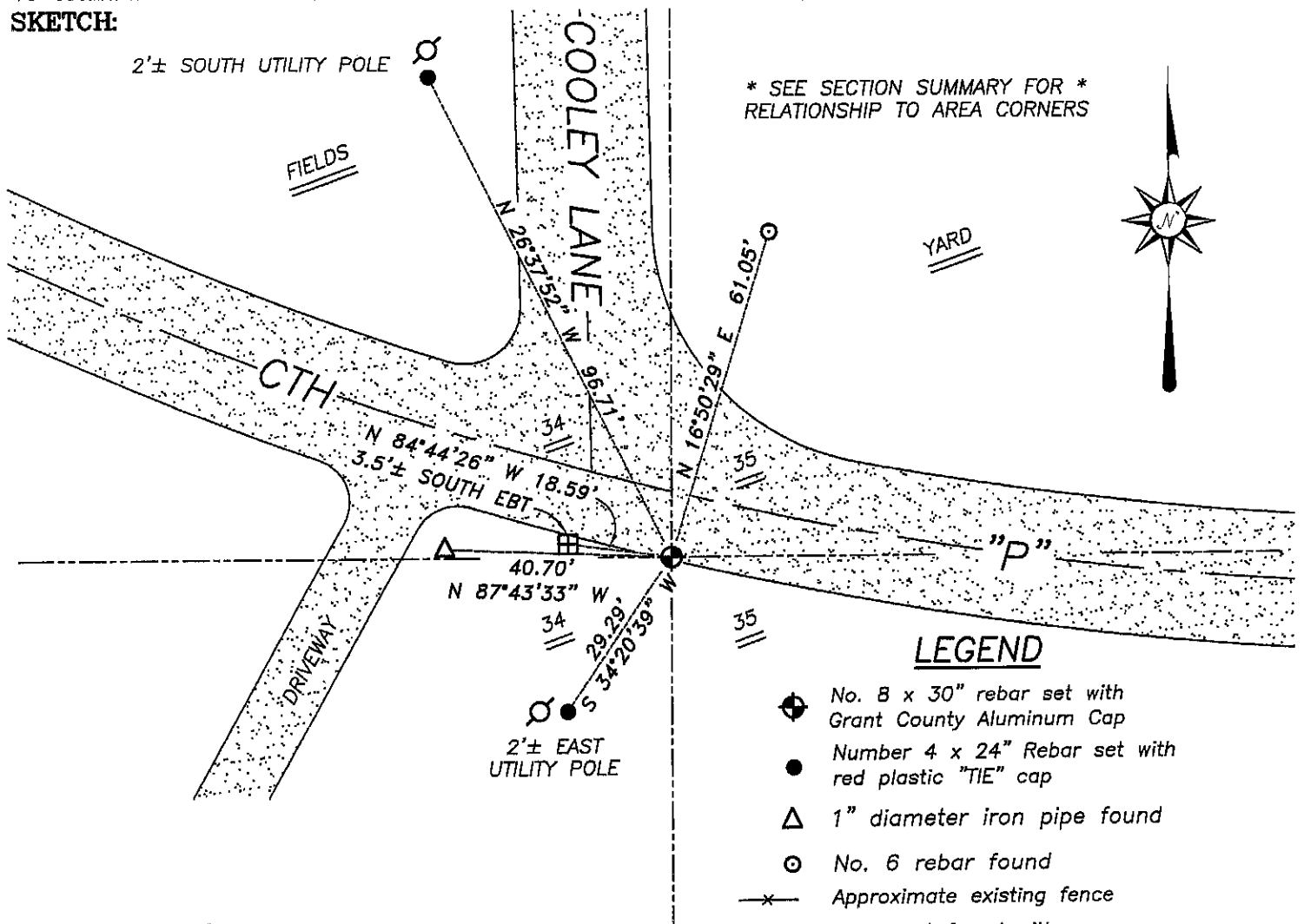
Corner was originally set in 1832 by Clark. In 1974 Ralph set a 1" iron pipe near the corner but did not state it was the corner. In 2005 Kramer set a monument as shown below. No other record of the corner was found.

DESCRIPTION OF CORNER EVIDENCE FOUND

I reset the corner proportionately and on-line between the Southwest and Northwest corners. This location fit the physical evidence of fences and Malliet's survey along the East-West 1/4 line. Verified this location using EDM & GPS methods.

DESCRIPTION OF CORNER AND WITNESS MONUMENTS, references and accessories used to perpetuate the original or re-established location of this corner. Witnesses to corner location Bobby Sedgwick & Brad Digman & Shane Austin

SKETCH:



SKETCH NOT TO SCALE



Austin Engineering LLC

4211 HWY 81 E, LANCASTER, WI 53813
PHONE 608-723-6363 FAX 608-723-6702

JOB NUMBER: 05s337
FIELDBOOK: TDSR, 2515
G:\T6NR6W\33A
H:\TIE\T6NR6W\118

DRAWN BY: SW AUSTIN
APPROVED: LL AUSTIN