

# GRANT COUNTY CERTIFIED LAND CORNER

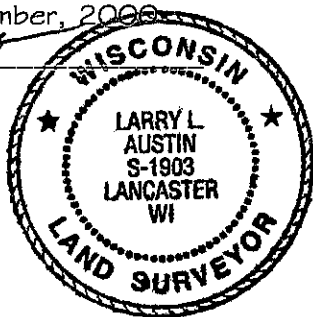
CORNER NUMBER 116

**CERTIFICATE:**

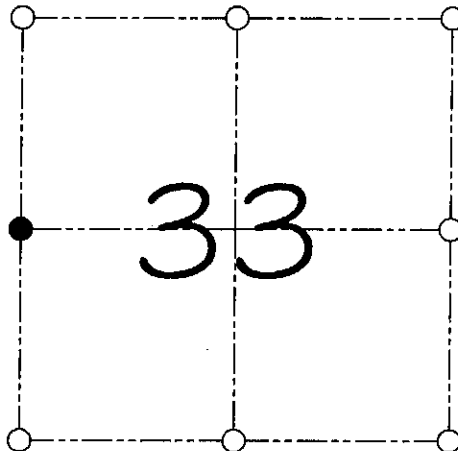
I, Larry L. Austin, do hereby certify that on the 5th day of September, 2000, I found evidence of the West 1/4 corner of Section 33, Town 6 North, Range 6 West, of the 4th Principal Meridian, and I re-established said corner according to the Wisconsin statutes as shown and described hereon.

Dated this 8th day of September, 2000

*Larry L. Austin*  
Larry L. Austin S-1903



SEAL



● = CORNER LOCATION

WEST 1/4 CORNER OF  
SECTION 33, T 6 N R 6 W  
TOWN OF WYALUSING

**HISTORY OF ORIGINAL CORNER ESTABLISHMENT:**

Corner was originally set in 1832 by Robert Clark.  
No other record of the corner was found.

**DESCRIPTION OF CORNER EVIDENCE FOUND:**

I reset the corner at an occupied location and accepted it's  
location after an E.D.M. & G.P.S. traverse of the area.

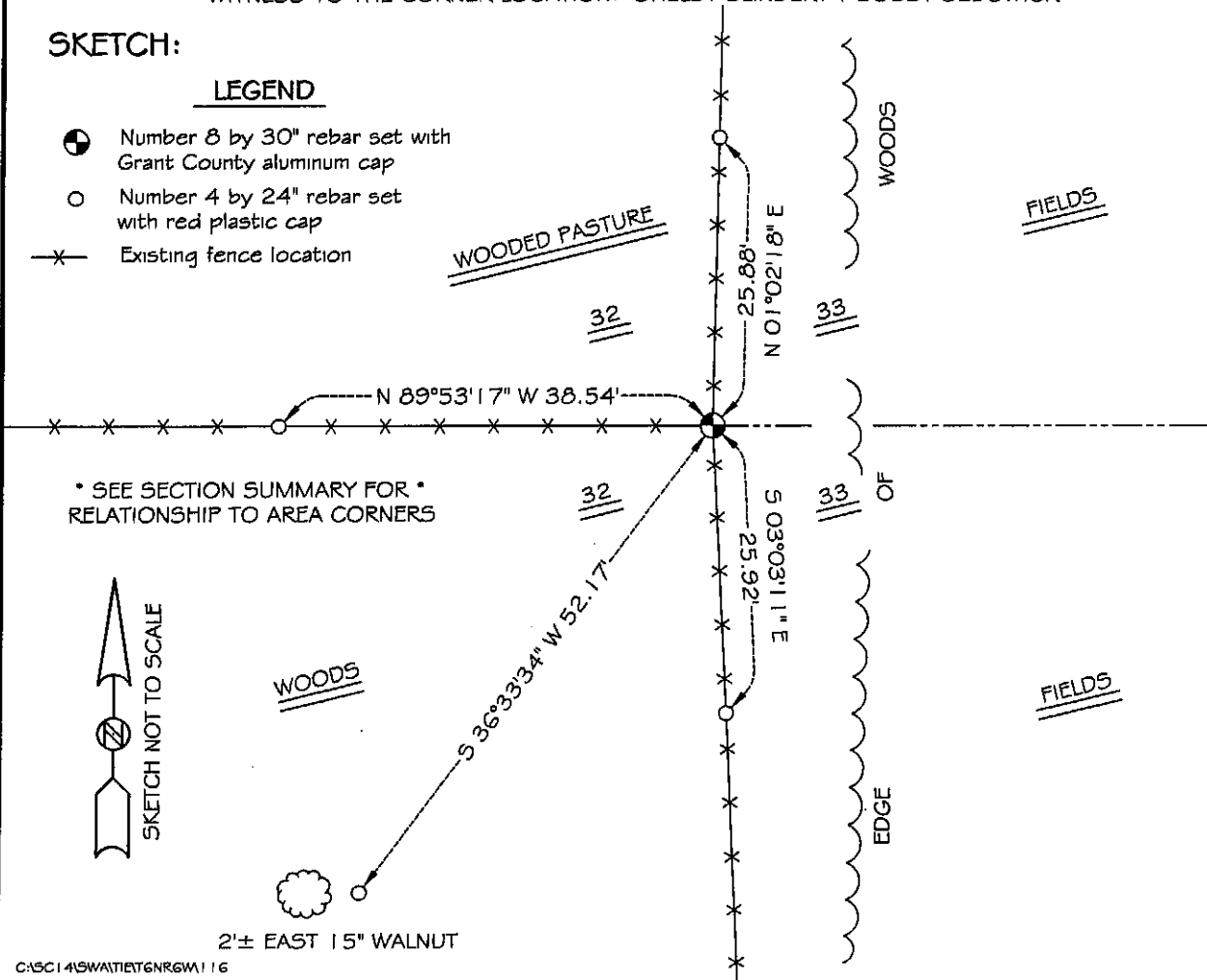
**DESCRIPTION OF CORNER AND WITNESS MONUMENTS, references and accessories used to perpetuate the original or re-established location of this corner**

WITNESS TO THE CORNER LOCATION: SHELBY BLINDERT & BOBBY SEDGWICK

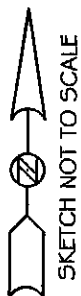
**SKETCH:**

LEGEND

- Number 8 by 30" rebar set with Grant County aluminum cap
- Number 4 by 24" rebar set with red plastic cap
- x— Existing fence location



\* SEE SECTION SUMMARY FOR \*  
RELATIONSHIP TO AREA CORNERS



2± EAST 15" WALNUT