

**U.S. PUBLIC LAND SURVEY MONUMENT RECORD - GRANT COUNTY, WI**

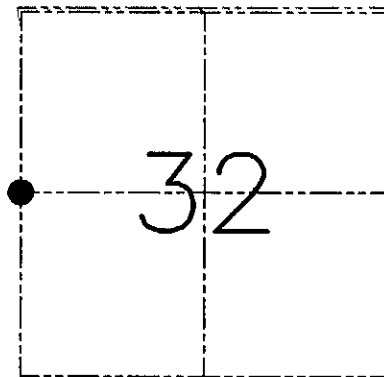
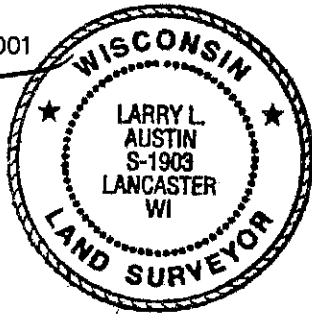
Section , Town 6 North Range 6 West, Town of Wyalusing

**CERTIFICATE**

I, Larry L. Austin, do hereby certify that the corner location on this record was determined by me and/or under my direct supervision and that this U.S. public land survey monument record is correct and complete to the best of my knowledge and belief.

Dated this 3rd day of May, 2001

*Larry L. Austin*  
Larry L. Austin S-1903



● = CORNER LOCATION

**HISTORY OF CORNER ESTABLISHMENT**

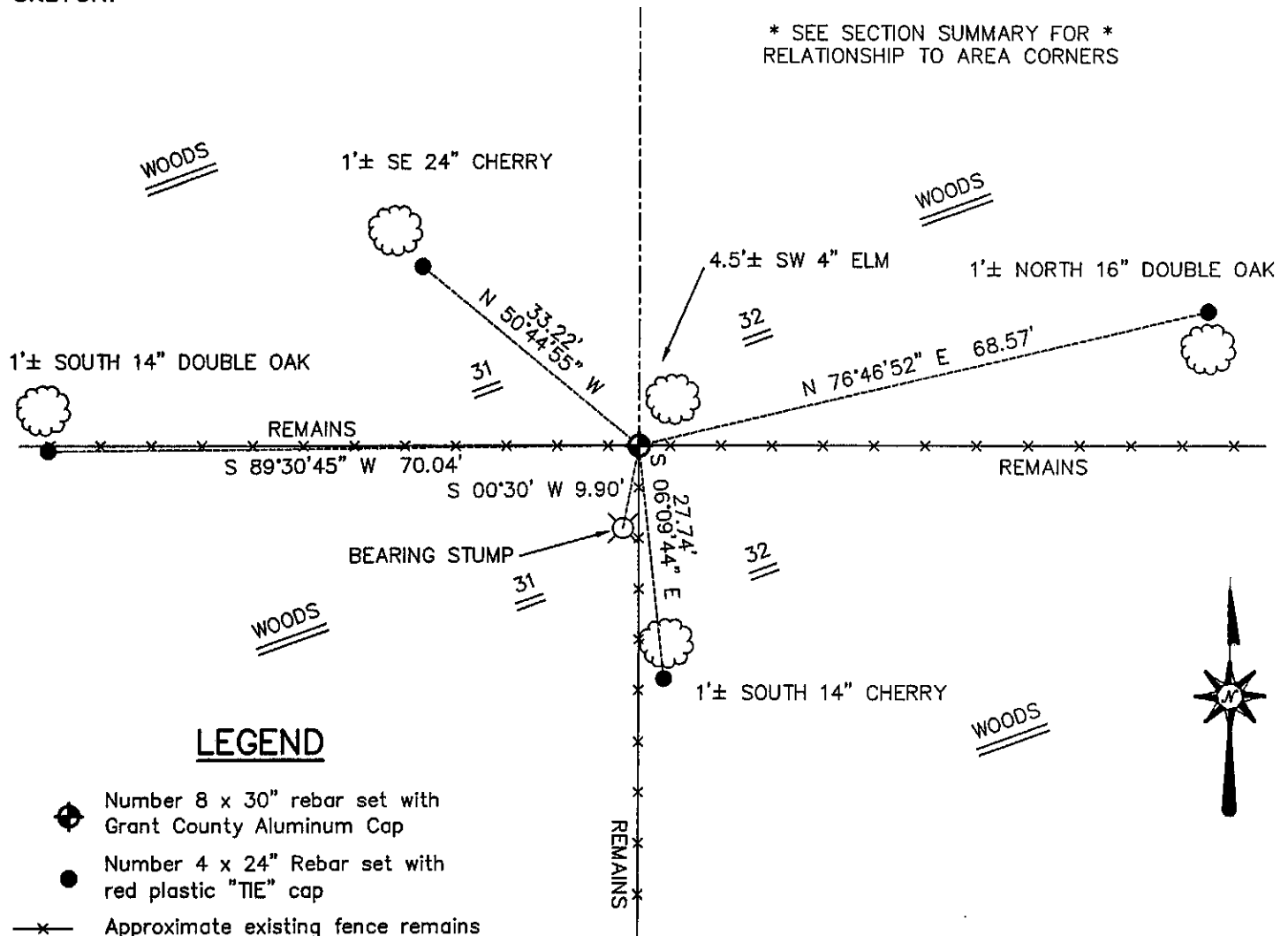
Corner was originally set in 1832 by Robert Clark.  
No other record of the corner was found.

**DESCRIPTION OF CORNER EVIDENCE FOUND**

I found a stump of the original bearing tree. I set the corner with respect to this stump. The corner also fits well with occupational evidence. Verified this location using EDM & GPS methods.

**DESCRIPTION OF CORNER AND WITNESS MONUMENTS, references and accessories used to perpetuate the original or re-established location of this corner. Witnesses to the corner location Bobby Sedgwick & Shane Austin & Tim Fauver.**

**SKETCH:**



SKETCH NOT TO SCALE

**AUSTIN ENGINEERING, LLC**

4211 HWY 81 EAST, LANCASTER, WI 53813  
PHONE 608-723-6363 FAX 608-723-6702

FIELDBOOK: SDR33, 2042  
G: \T6NR6W\33  
C: \SWA\TIE\T6NR6W\115  
CREW: BS-SB-SA-TF

DRAWN BY: SW AUSTIN  
APPROVED: LL AUSTIN

**CORNER NUMBER 115**