

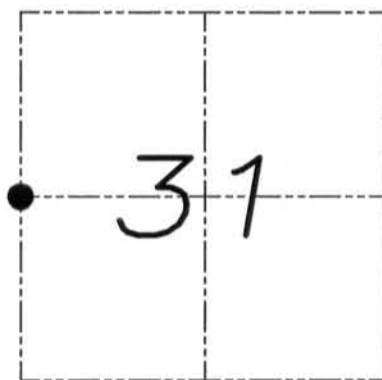
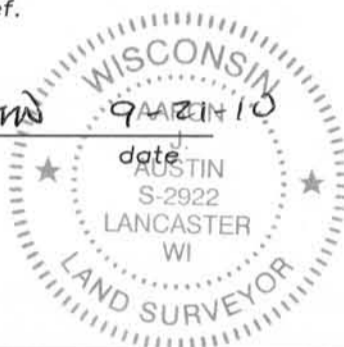
U.S. PUBLIC LAND SURVEY MONUMENT RECORD

Section 31, Town 6 North Range 6 West, Town of Wyalusing, Grant County, Wisconsin

CERTIFICATE

I, Larry L. Austin, do hereby certify that the corner location on this record was determined by me and/or under my direct supervision and that this U.S. public land survey monument record is correct and complete to the best of my knowledge and belief.

Aaron J. Austin
 Aaron J. Austin, S-2922



● = CORNER LOCATION

HISTORY OF CORNER

Corner was originally set in 1832 by Robert Clark. No other record of the corner was found.

CORNER EVIDENCE FOUND

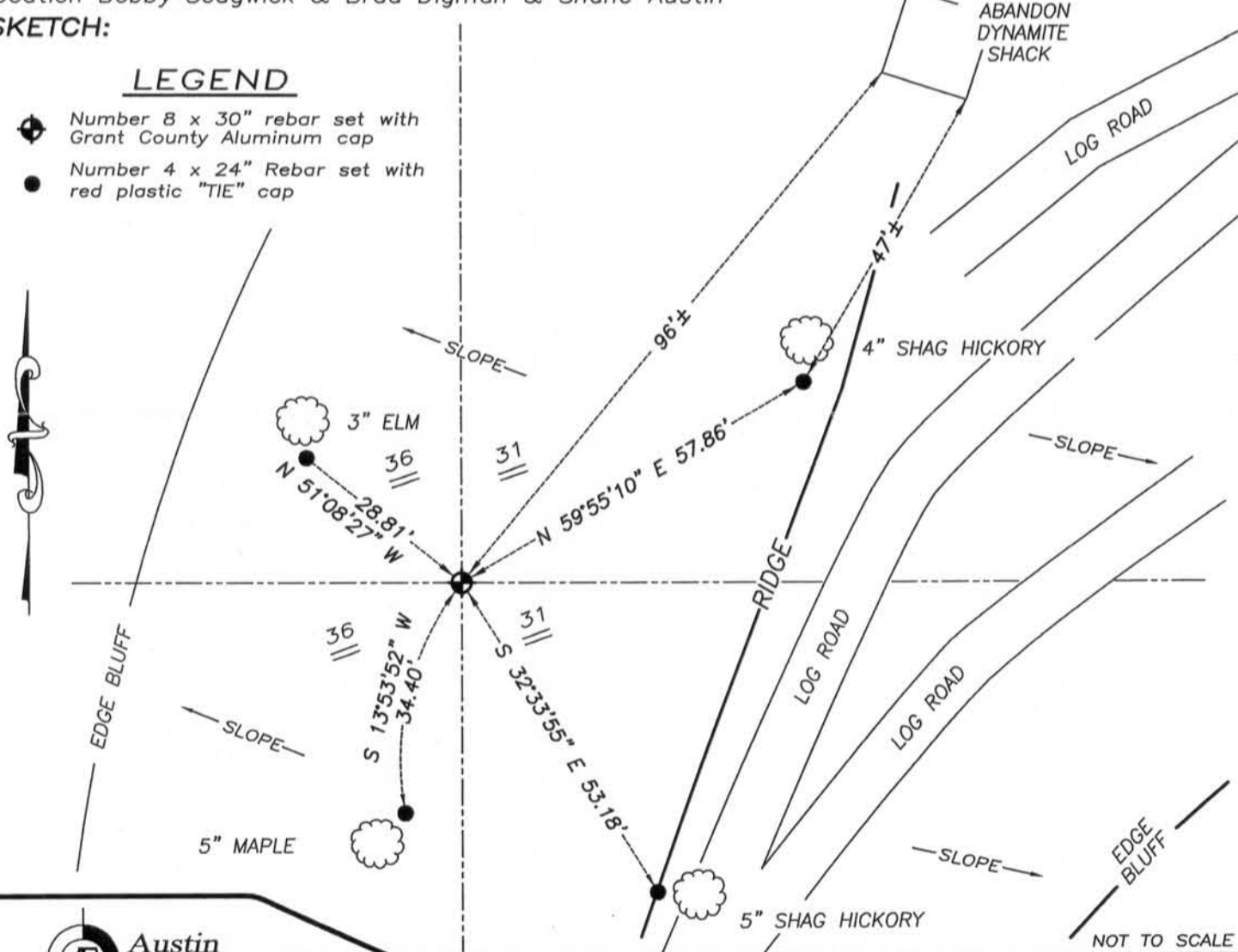
In 2009 William Bulawa established the West line of the Southwest Quarter. I used his location for Easting. The Northing of the corner was based on existing physical evidence at the Northwest corner of the Southwest Quarter of the Southwest Quarter. Verified this location using EDM & GPS methods.

DESCRIPTION OF CORNER AND WITNESS MONUMENTS, references and accessories used to perpetuate the original or re-established location of this corner. Witnesses to monument location Bobby Sedgwick & Brad Digman & Shane Austin

SKETCH:

LEGEND

- ◆ Number 8 x 30" rebar set with Grant County Aluminum cap
- Number 4 x 24" Rebar set with red plastic "TIE" cap



NOT TO SCALE

Austin Engineering LLC
 austinengineeringllc.com
 4211 HWY 81 E, LANCASTER, WI 53813
 PHONE: 608-723-6363 FAX: 608-723-6702

JOB NUMBER 10S215-CUTCHINS
 FIELDBOOK: TDSR, 10-02 DRAWN BY: SW AUSTIN
 G:\T6NR6W\33A APPROVED: AJ AUSTIN
 H:\TIE\T6NR6W\114