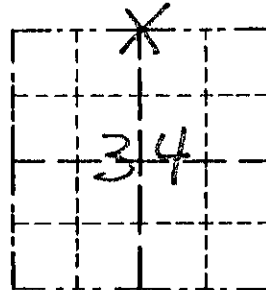


Survey Monument Record

TYPE OF MONUMENT 3/4" x 24" IRON BAR SET

CORNER NO. 106
 SECTION 34
 TOWN 6N
 RANGE 6W

FIELD BOOK: 95-19
 PAGE 29



BASIS FOR MONUMENT LOCATION

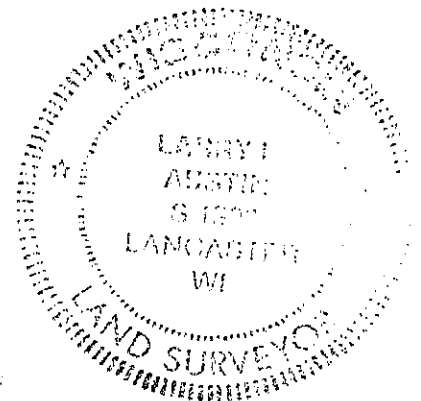
(Use reverse side if necessary)

Show info such as: History of corner, with reference to Vol. and pg., dates, surveyor; exact description of monument replaced; if location computed, by taped or EDM traverse; landowner, remarks, etc.

LOCATION
 (Indicated by "X")

SEAL:

CORNER SET IN 1832 BY ROBERT CLARK. NO RECORD OF CORNER FOUND SINCE ORIGINAL SURVEY; CORNER WAS SET AT AN OCCUPATIONAL EVIDENCE LOCATION; VERIFIED ITS LOCATION 1/2 MILE EAST/WEST USING EDM METHODS



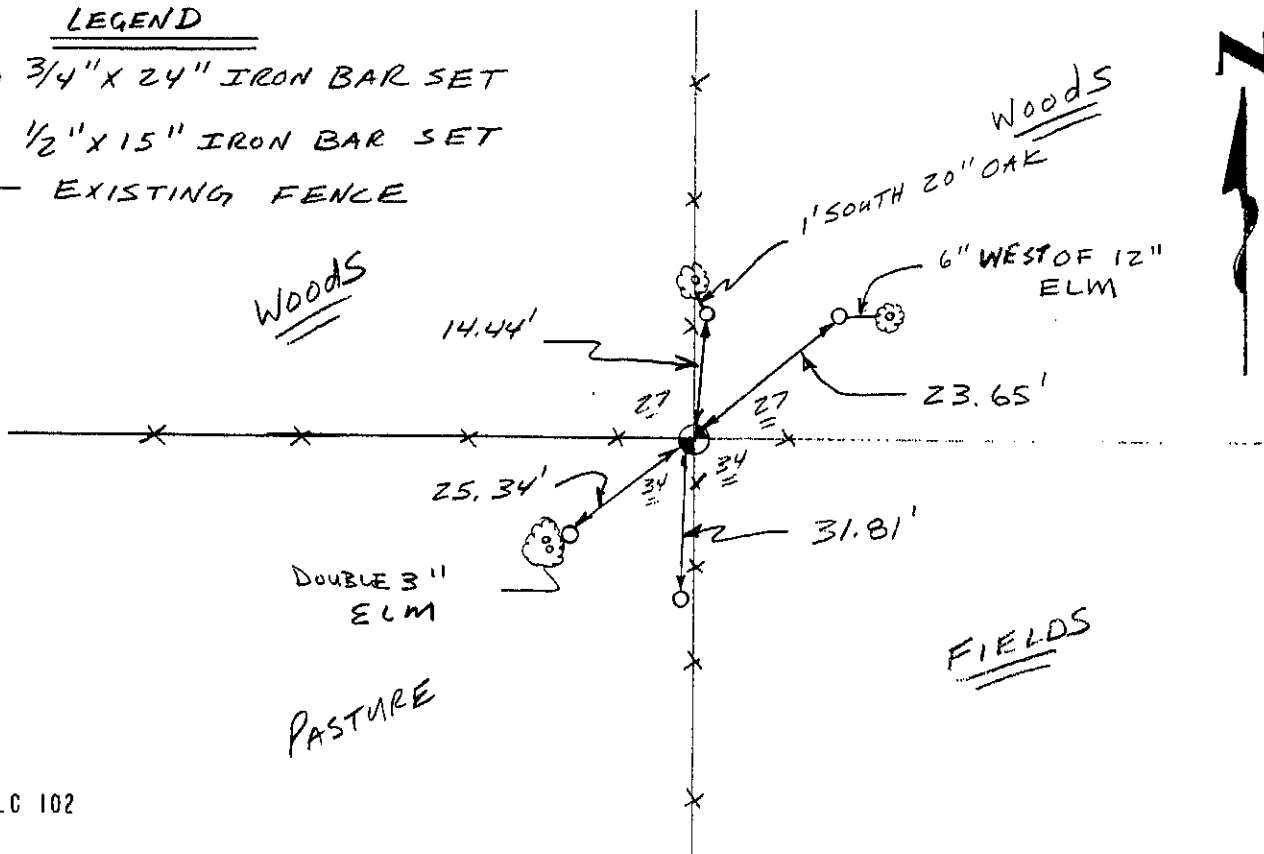
CERTIFIED CORRECT

Larry Austin
 Registered Land Surveyor
 DATE: 4/13/98

TIE SKETCH

Show at least three (3) ties and monument
LEGEND

- ⊕ 3/4" x 24" IRON BAR SET
- 1/2" x 15" IRON BAR SET
- XX EXISTING FENCE



NO SCALE