

# U.S. PUBLIC LAND SURVEY MONUMENT RECORD - GRANT COUNTY, WI

Section 26, Town 6 North Range 6 West, Town of Wyalusing (a)

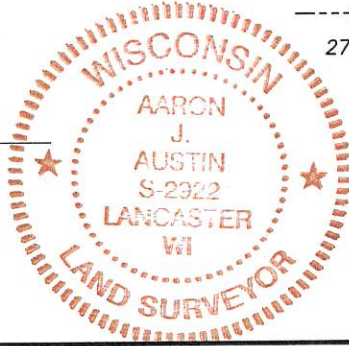
NOTE: This form is intended and designed to fulfill all requirements of the Wisconsin Administrative Code Chapter A-E 7.08, U.S. Public Land Survey Monument Record (3) (a) (b) (c) (d) (e) (f) (g) (h) (i).

**CERTIFICATE: (i)**

I, Aaron J. Austin, Wisconsin Professional Land Surveyor, do hereby certify that the corner location on this record was determined by me and/or under my direct supervision and that this U.S. Public Land Survey Monument Record is correct and complete to the best of my knowledge and belief.

Dated this 9th day of April, 2019.

*Aaron J. Austin*  
Aaron J. Austin, S-2922



⊕ = CORNER LOCATION

Grant County Coordinates:  
NAD 83 (2011)  
Northing: 567,121.49  
Easting: 724,940.33

**HISTORY OF CORNER ESTABLISHMENT:**

Original corner was set in 1832 by Robert Clark.  
Larry Austin set a 1" rebar with a Grant County Aluminum Cap and prepared a Survey Monument Record dated 10-8-1998.

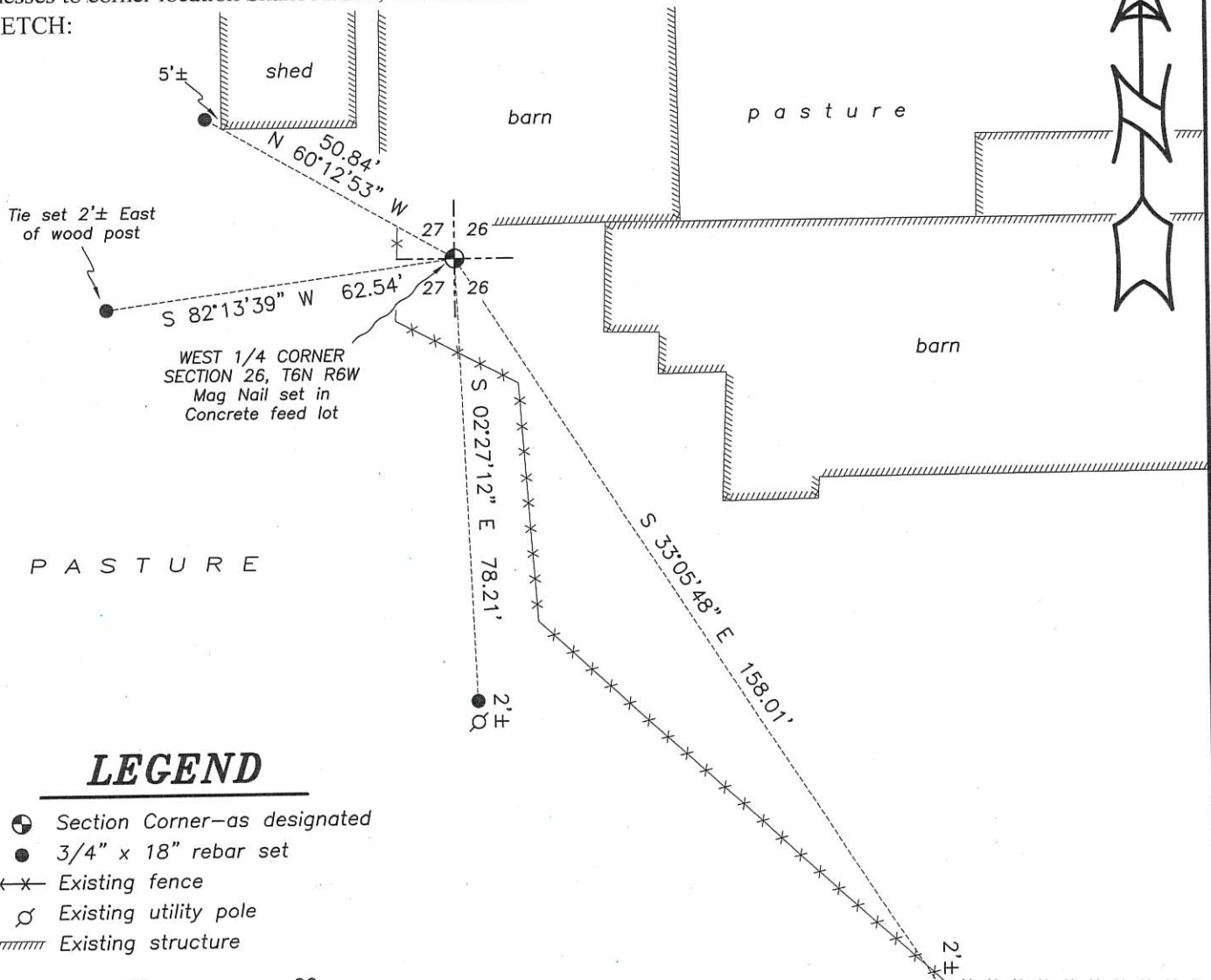
**DESCRIPTION OF CORNER EVIDENCE FOUND: (b) (f) (g) (h)**

No evidence of the rebar or witness corners were found.  
I reset the corner at Larry Austin's location based upon measurements taken to the corner of a previous survey by me dated 4-4-2009, filed in Book 24, Page 79. I set mag nail in a concrete feed lot for the corner monument and set four new witness monuments after I verified the monument's location with G.P.S. and E.D.M. methods

**DESCRIPTION OF CORNER AND WITNESS MONUMENTS.** references and accessories used to perpetuate the original or re-established location of this corner. (c) (d) (e)

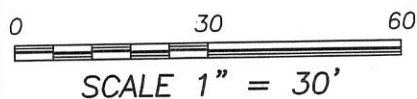
Witnesses to corner location Shane Austin, Owen Austin.

**SKETCH:**



**LEGEND**

- ⊕ Section Corner—as designated
- 3/4" x 18" rebar set
- x-x-x- Existing fence
- ⊕ Existing utility pole
- Existing structure



# GRANT COUNTY CERTIFIED LAND CORNER

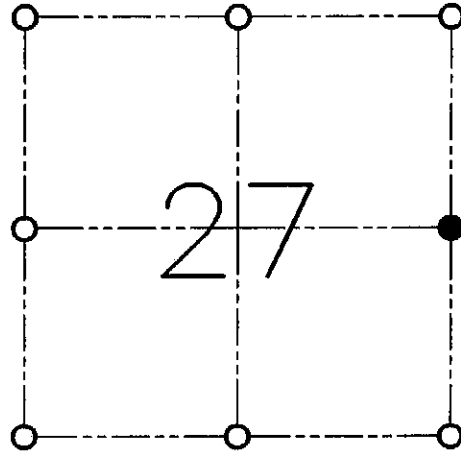
CORNER NO. 98

**CERTIFICATE:**

I, LARRY L. AUSTIN, DO HEREBY CERTIFY THAT ON EIGHTH DAY OF JULY, 1998 I FOUND NO EVIDENCE OF THE EAST 1/4 CORNER OF SECTION 27, TOWN 6 NORTH, RANGE 6 WEST, OF THE FOURTH PRINCIPAL MERIDIAN, AND I RE-ESTABLISHED SAID CORNER ACCORDING TO THE WISCONSIN STATUTES AS SHOWN AND DESCRIBED HEREON.

DATED THIS TENTH DAY OF AUGUST, 1998

*Larry L. Austin*  
LARRY L. AUSTIN S-1903



● = CORNER LOCATION

**EAST 1/4 CORNER OF  
SECTION 27, T 6 N R 6 W  
TOWN OF WYALUSING**

**HISTORY OF ORIGINAL CORNER ESTABLISHMENT:**

CORNER WAS SET IN 1832 BY ROBERT CLARK.

**DESCRIPTION OF CORNER EVIDENCE FOUND:**

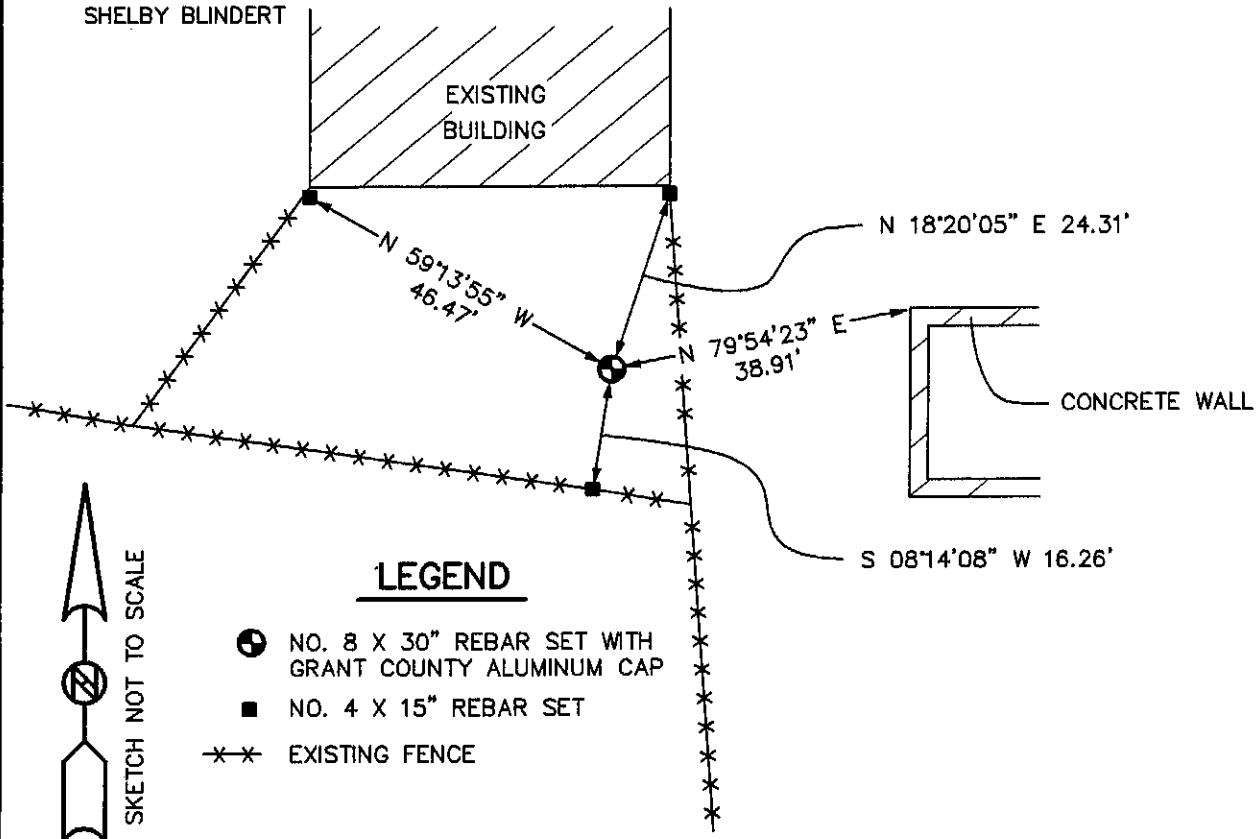
I FOUND NO EVIDENCE OF THE CORNER LOCATION. I SET THE CORNER BY SINGLE PROPORTION ALONG THE EAST LINE OF THE SOUTHEAST 1/4. VERIFIED THIS LOCATION USING E.D.M. AND G.P.S. METHODS.

**DESCRIPTION OF CORNER AND WITNESS MONUMENTS, REFERENCES AND ACCESSORIES USED TO PERPETUATE THE ORIGINAL OR RE-ESTABLISHED LOCATION OF THIS CORNER:**

**WITNESS TO THE CORNER LOCATION:**

BOBBY SEDGWICK  
SHELBY BLINDERT

**SKETCH:**



**LEGEND**



- NO. 8 X 30" REBAR SET WITH GRANT COUNTY ALUMINUM CAP
- NO. 4 X 15" REBAR SET
- \*-\* EXISTING FENCE