

66086

# U.S. PUBLIC LAND SURVEY MONUMENT RECORD - GRANT COUNTY, WI

Section 22, Town 6 North Range 6 West, Town of Wyalusing (a)

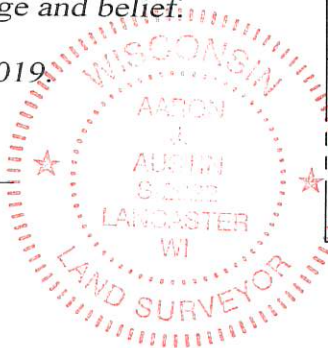
NOTE: This form is intended and designed to fulfill all requirements of the Wisconsin Administrative Code Chapter A-E 7.08, U.S. Public Land Survey Monument Record (3) (a) (b) (c) (d) (e) (f) (g) (h) (i).

### CERTIFICATE: (i)

I, Aaron J. Austin, Wisconsin Professional Land Surveyor, do hereby certify that the corner location on this record was determined by me and/or under my direct supervision and that this U.S. Public Land Survey Monument Record is correct and complete to the best of my knowledge and belief.

Dated this 23rd day of December, 2019.

*Aaron J. Austin*  
Aaron J. Austin, S-2922



Grant County Coordinates:  
NAD 83 (2011)  
Northing: 569,820.71  
Easting: 722,286.52

### HISTORY OF CORNER ESTABLISHMENT:

Original corner was set in 1832 by Robert Clark.  
Larry Austin set a 1" rebar with a Grant County Aluminum Cap and prepared a Survey Monument Record dated 8/21/1998.

### DESCRIPTION OF CORNER EVIDENCE FOUND: (b) (f) (g) (h)

I found the monument disturbed due to a new fence being installed. I reset the monument from two found witness corners by Austin and I set two new witness corners. The monument's location was verified with G.P.S. and E.D.M. methods.

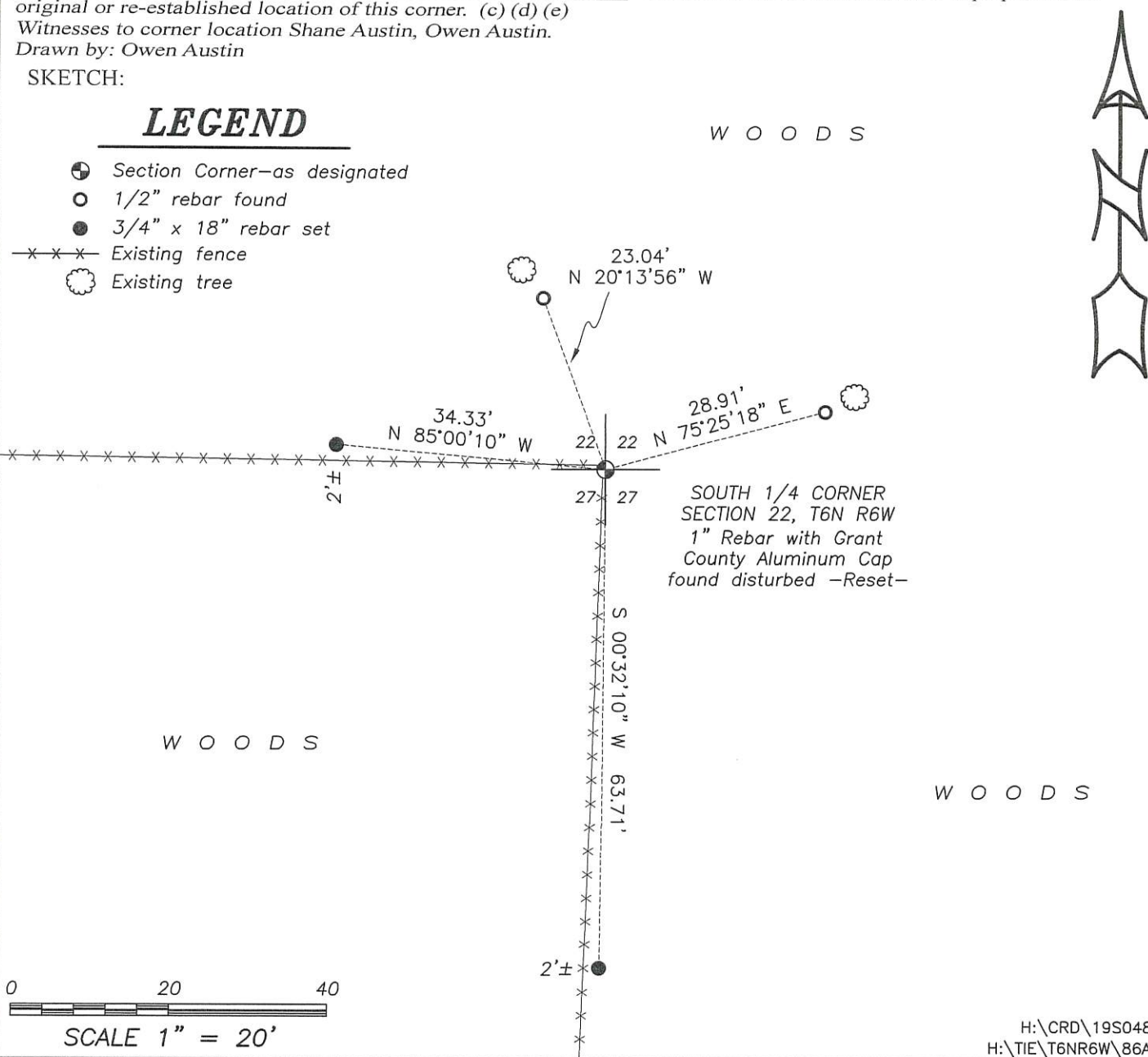
### DESCRIPTION OF CORNER AND WITNESS MONUMENTS, references and accessories used to perpetuate the original or re-established location of this corner. (c) (d) (e)

Witnesses to corner location Shane Austin, Owen Austin.  
Drawn by: Owen Austin

SKETCH:

## LEGEND

- Section Corner—as designated
- 1/2" rebar found
- 3/4" x 18" rebar set
- Existing fence
- Existing tree



# GRANT COUNTY CERTIFIED LAND CORNER

CORNER NO. 86

**CERTIFICATE:**

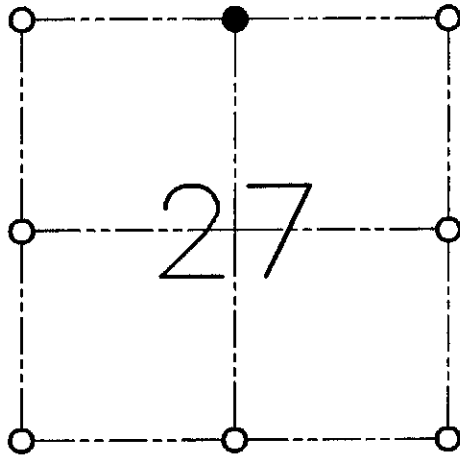
I, LARRY L. AUSTIN, DO HEREBY CERTIFY THAT ON EIGHTH DAY OF JULY, 1998, I FOUND OCCUPATIONAL EVIDENCE OF THE NORTH 1/4 OF SECTION 27, TOWN 6 NORTH, RANGE 6 WEST, OF THE FOURTH PRINCIPAL MERIDIAN, AND I RE-ESTABLISHED SAID CORNER ACCORDING TO THE WISCONSIN STATUTES AS SHOWN AND DESCRIBED HEREON.

DATED THIS TWENTY-FIRST DAY OF AUGUST, 1998

*Larry L. Austin*  
LARRY L. AUSTIN S-1903



SEAL



● = CORNER LOCATION

**NORTH 1/4 OF SECTION 27  
T 6 N R 6 W  
TOWN OF WYALUSING**

**HISTORY OF ORIGINAL CORNER ESTABLISHMENT:**

CORNER WAS SET IN 1832 BY ROBERT CLARK.

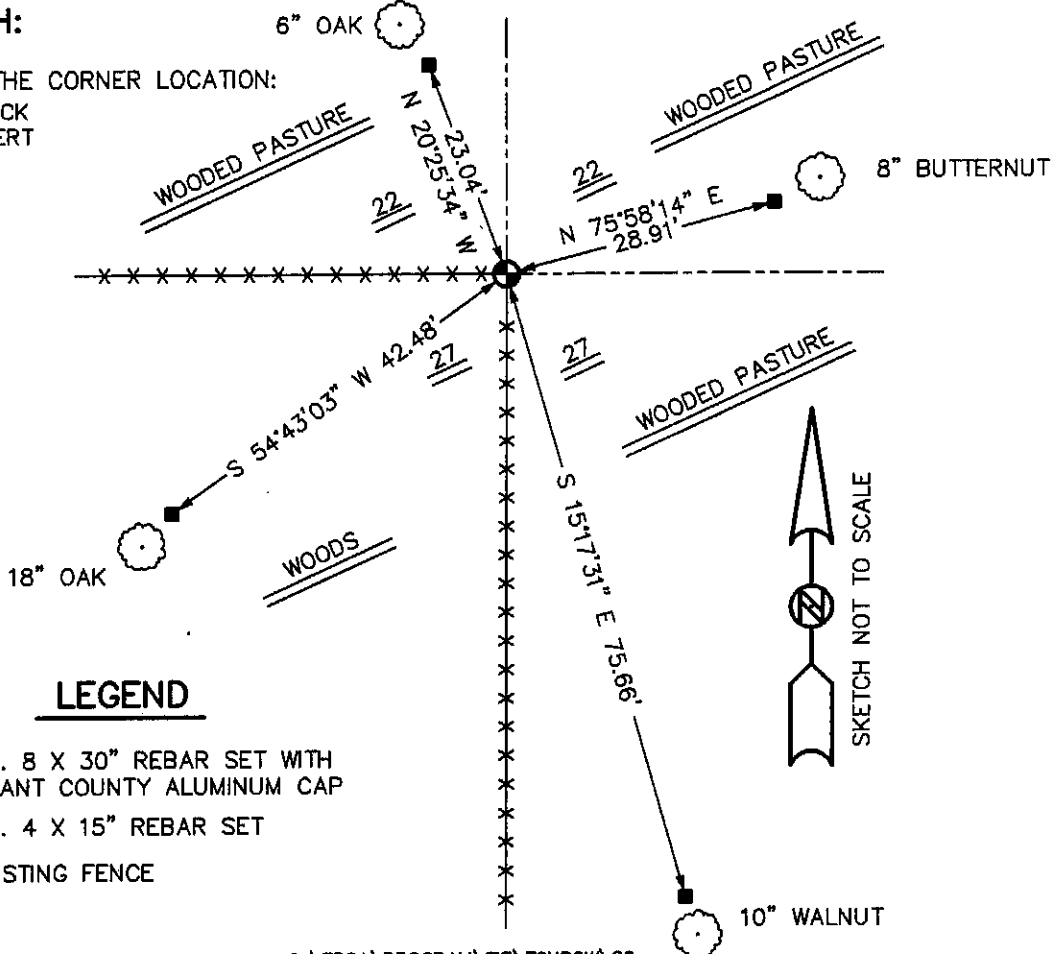
**DESCRIPTION OF CORNER EVIDENCE FOUND:**

I FOUND AN OCCUPIED FENCE CORNER. I ACCEPTED THIS LOCATION AFTER AND E.D.M. AND G.P.S. TRAVERSE OF THE AREA CORNERS.

**DESCRIPTION OF CORNER AND WITNESS MONUMENTS, REFERENCES AND ACCESSORIES USED TO PERPETUATE THE ORIGINAL OR RE-ESTABLISHED LOCATION OF THIS CORNER:**

**SKETCH:**

WITNESS TO THE CORNER LOCATION:  
BOBBY SEDGWICK  
SHELBY BLINDERT



**LEGEND**

- NO. 8 X 30" REBAR SET WITH GRANT COUNTY ALUMINUM CAP
- NO. 4 X 15" REBAR SET
- x—x— EXISTING FENCE