

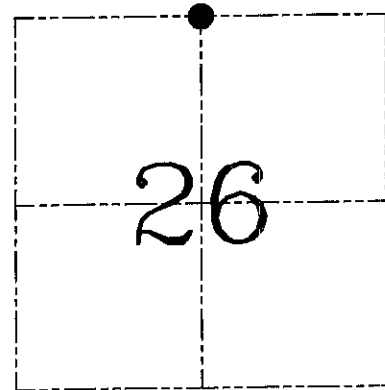
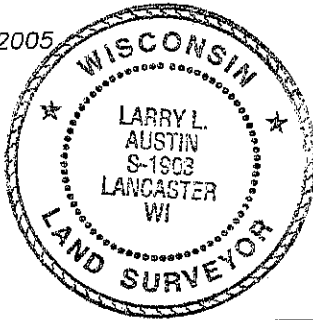
**U.S. PUBLIC LAND SURVEY MONUMENT RECORD – GRANT COUNTY, WI**  
**Section 26, Town 6 North Range 6 West, Town of Wyalusing**

CERTIFICATE

I, Larry L. Austin, do hereby certify that the corner location on this record was determined by me and/or under my direct supervision and that this U.S. public land survey monument record is correct and complete to the best of my knowledge and belief.

Dated this 10th day of December, 2005

*Larry L. Austin*  
 Larry L. Austin S-1903



● = CORNER LOCATION

HISTORY OF CORNER ESTABLISHMENT

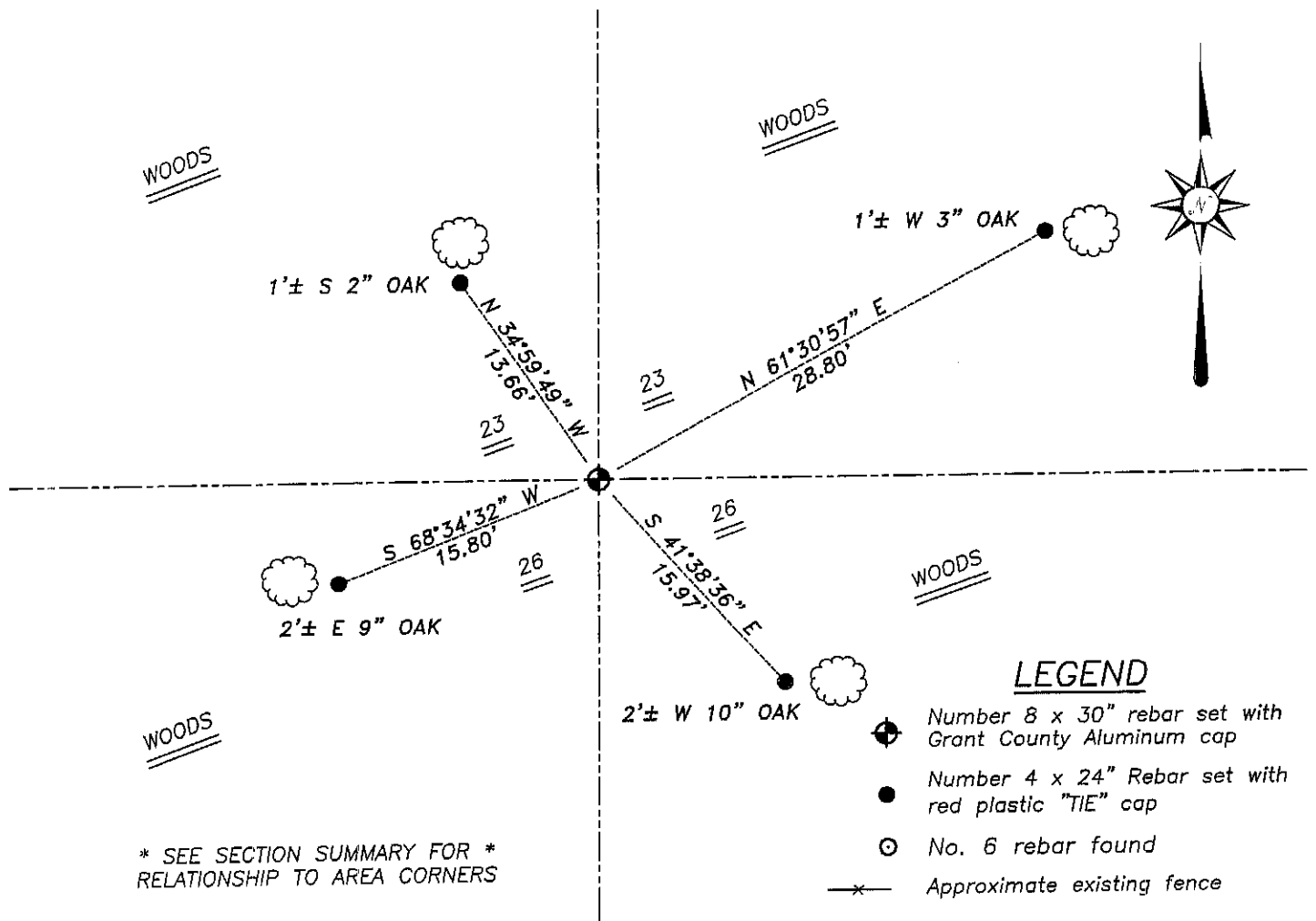
Corner was originally set in 1832 by Robert Clark.  
 No other record of the corner was found.

DESCRIPTION OF CORNER EVIDENCE FOUND

I reset the corner proportionately between the Northwest and Northeast corners. Verified this corner using EDM & GPS methods.

DESCRIPTION OF CORNER AND WITNESS MONUMENTS, references and accessories used to perpetuate the original or re-established location of this corner. Witnesses to corner location Brad Digman & Shelby Blindert.

**SKETCH:**



\* SEE SECTION SUMMARY FOR \*  
 RELATIONSHIP TO AREA CORNERS

SKETCH NOT TO SCALE



**Austin**  
 Engineering LLC

4211 HWY 81 E, LANCASTER, WI 53813  
 PHONE 608-723-8363 FAX 608-723-6702

JOB NUMBER 04S217  
 FIELDBOOK: 2507  
 G:\T6NR6W\18  
 H:\TIE\T6NR6W\84

DRAWN BY: ML DIGMAN  
 APPROVED: LL AUSTIN