

U.S. PUBLIC LAND SURVEY MONUMENT RECORD – GRANT COUNTY, WI
Section 24, Town 6 North Range 6 West, Town of Wyalusing

CERTIFICATE

I, Larry L. Austin, do hereby certify that the corner location on this record was determined by me and/or under my direct supervision and that this U.S. public land survey monument record is correct and complete to the best of my knowledge and belief.

Dated this 28th day of July, 2003

Larry L. Austin
 Larry L. Austin S-1903



● = CORNER LOCATION

HISTORY OF CORNER ESTABLISHMENT

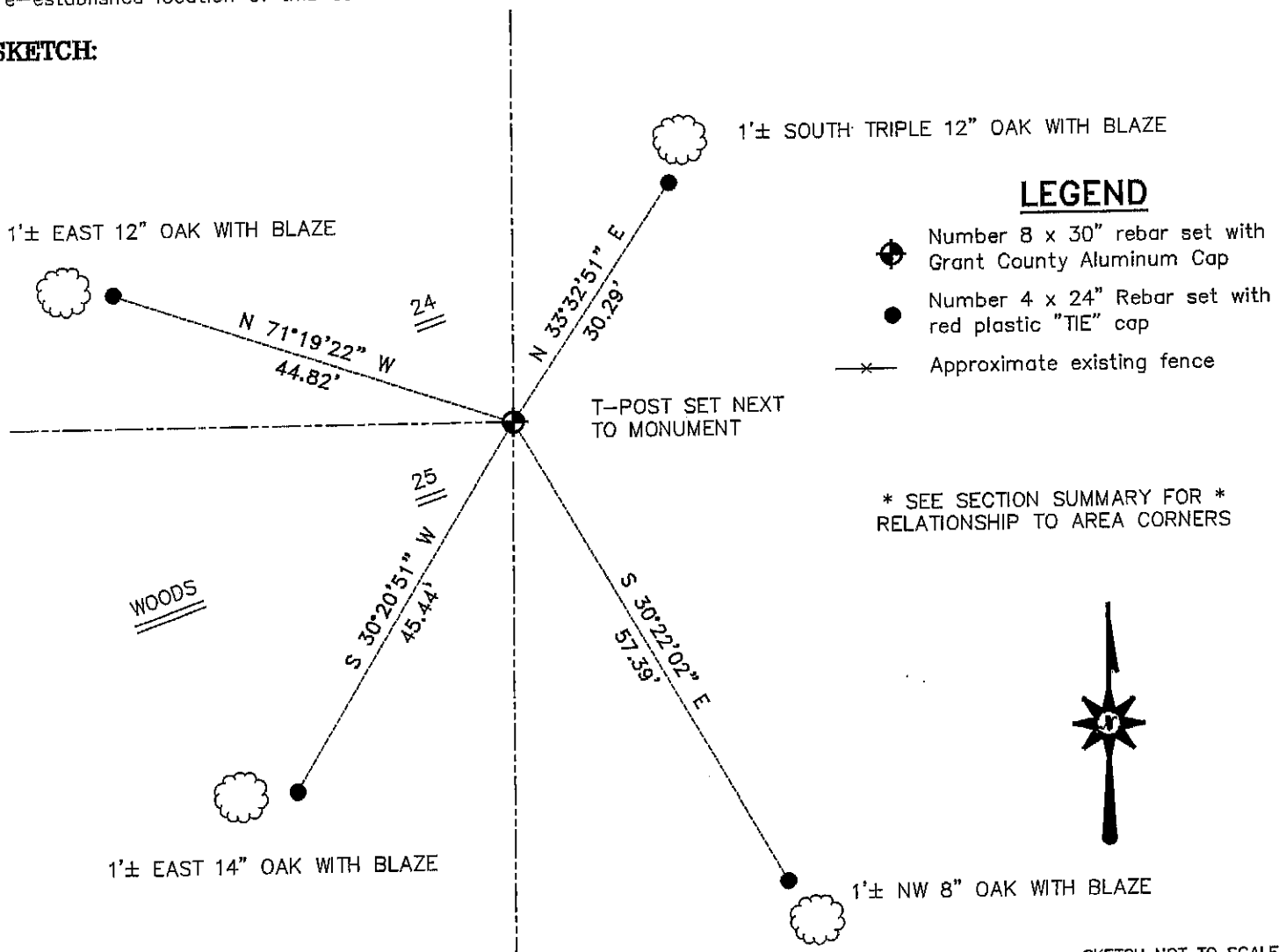
Corner was originally set in 1832 by Sibley.
 No other record of the corner was found.

DESCRIPTION OF CORNER EVIDENCE FOUND

I established the corner by doubling the occupied Southeast 1/4 of the Northeast 1/4 of Section 25 for Northing. Easting was established online between the Northeast corner of Section 24 and the East Quarter of Section 25. Verified this location using EDM & GPS methods.

DESCRIPTION OF CORNER AND WITNESS MONUMENTS, references and accessories used to perpetuate the original or re-established location of this corner. Witnesses to corner location Bobby Sedgwick & Shane Austin & Brad Digman

SKETCH:



LEGEND

- Number 8 x 30" rebar set with Grant County Aluminum Cap
- Number 4 x 24" Rebar set with red plastic "TIE" cap
- Approximate existing fence

* SEE SECTION SUMMARY FOR *
 RELATIONSHIP TO AREA CORNERS



SKETCH NOT TO SCALE

AUSTIN ENGINEERING, LLC

4211 HWY 81 EAST, LANCASTER, WI 53813
 PHONE 608-723-6363 FAX 608-723-6702

FIELDBOOK: TDS RNGR, 2307,
 G:\T6NR6W\18 2317
 H:\TIE\T6NR6W\81
 JOB NUMBER 03S122

DRAWN BY: SW AUSTIN
 APPROVED: LL AUSTIN

CORNER NUMBER 81