

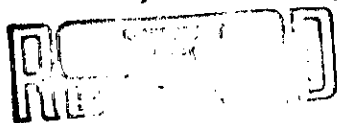
# U. S. PUBLIC LAND SURVEY MONUMENT RECORD

**INSTRUCTIONS:** This record shall show the location of the corner and shall include all of the following nine elements (a through i).

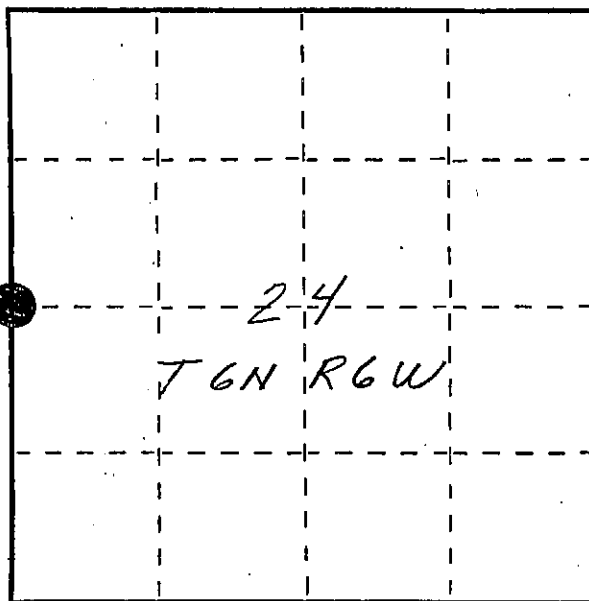
(a) Identify the corner by reference to the U.S. public land survey system.

● = Corner monument restored.

W 1/4 corner section 24  
T6N R6W of the 4th P.M.  
Town of Wyalusing  
Grant County, Wisconsin



MAR 2 1988

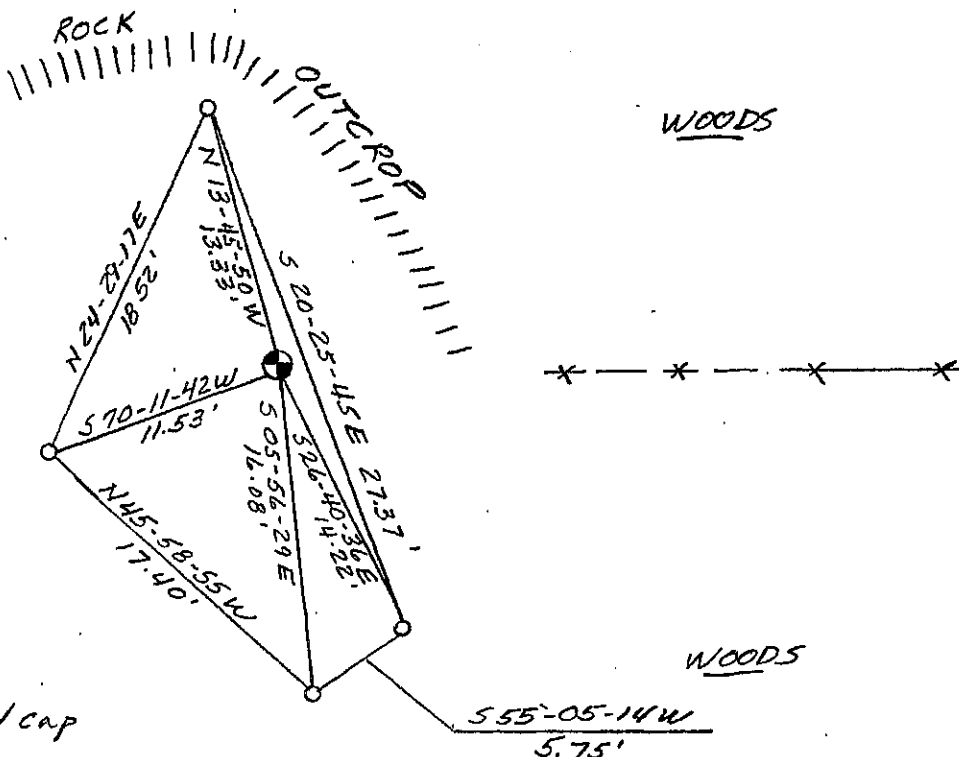


(b) Describe any record evidence, monument evidence, occupational evidence, testimonial evidence or any other material evidence you considered, and whether the monument was found or placed.

Monument was set as 1984 Brashaw survey shows location to be. Brashaw rebar was not found but corner location was determined by traverse to his other points. Corner was set at ancient fence line intersection and falls on top of rocky outcrop as referenced to in original field notes. No original bearing trees were found.

(c) In the plan view drawing below, provide reference ties to at least 4 witness monuments, or, if the location is within a municipality, to at least 2 witness monuments. (Witness monuments shall be made of concrete, natural stone, iron or other equally durable material, ~~except wood.~~) Describe witness monuments.

(d) Show a plan view drawing depicting the relevant monuments and reference ties which is sufficient in detail to enable accurate relocation of the corner monument if the corner monument is disturbed. Indicate north.



NO SCALE

BEARINGS - WIS. GRID

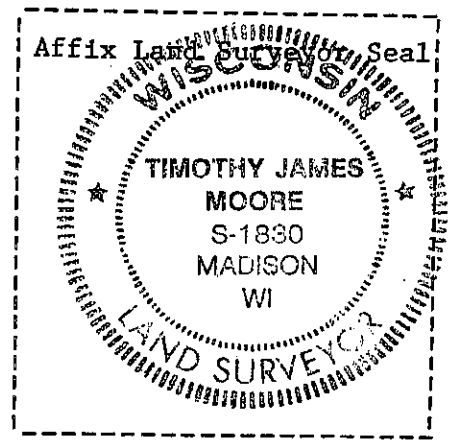
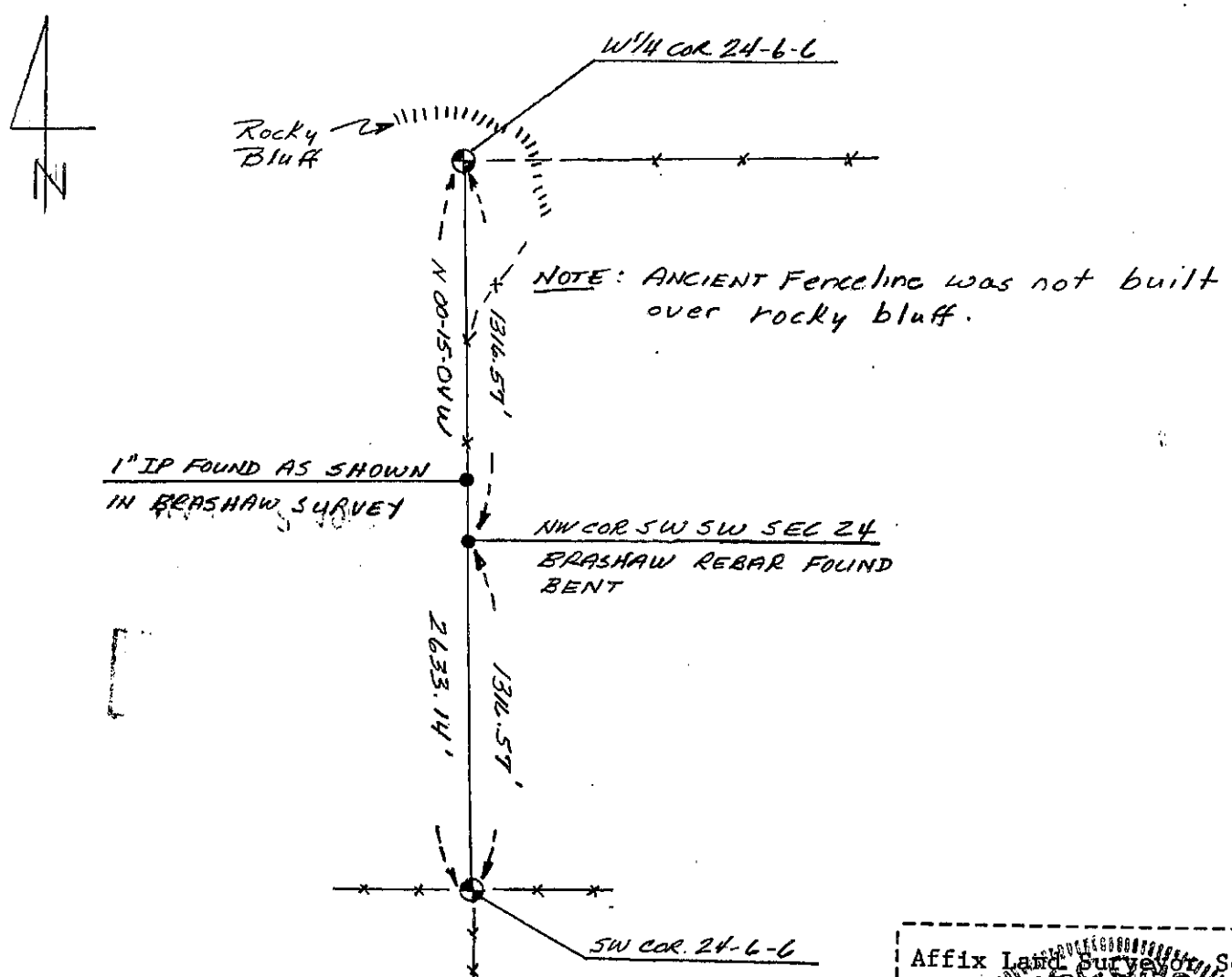
- Berntsen A-1 monument set in Rocky outcrop visible above ground.
- Ref. mon. - 3/4" x 24" rebar w/cap

(e) Describe any material discrepancy between the location of the corners restored or reestablished and the location that corner as previously restored or reestablished by distance and direction. Show the discrepancy on the plan view drawing under (d), above. Show the distances between the corner as previously restored or reestablished and (1) the corner as restored or reestablished, and (2) to at least 2 of the witness monuments shown on the drawing in (d), above.

(f) Was the corner restored through acceptance of (1) an obliterated evidence location, or, (2) a found perpetuated location?

(g&h) Was the corner reestablished through lost corner proportionate methods? If so, show the method, including the directions and distances to other public land survey corners used as evidence or used for proportioning in determining the corner location?

W 1/4 corner was set 2633.14' northerly of SW corner sec. 24 and on line with said SW corner and 1" iron pipe.



(1) I, Timothy J. Moore  
 (type or print name) certify that the corner location shown on this record was determined by me or under my direction and control and that this U.S. Public Land Survey Monument Record is correct and complete to the best of my knowledge and belief.

Timothy J. Moore 10-15-87  
 Signature Date