

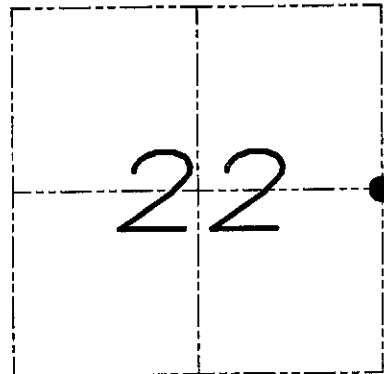
U.S. PUBLIC LAND SURVEY MONUMENT RECORD

Section 22, Town 6 North Range 6 West, Town of Wyalusing, Grant County, Wisconsin

CERTIFICATE

I, Larry L. Austin, do hereby certify that the corner location on this record was determined by me and/or under my direct supervision and that this U.S. public land survey monument record is correct and complete to the best of my knowledge and belief.

Larry L. Austin
Larry L. Austin, S-1903



● = CORNER LOCATION

HISTORY OF CORNER

Corner was originally set in 1832 by Clark. No other record of the corner was found.

CORNER EVIDENCE FOUND

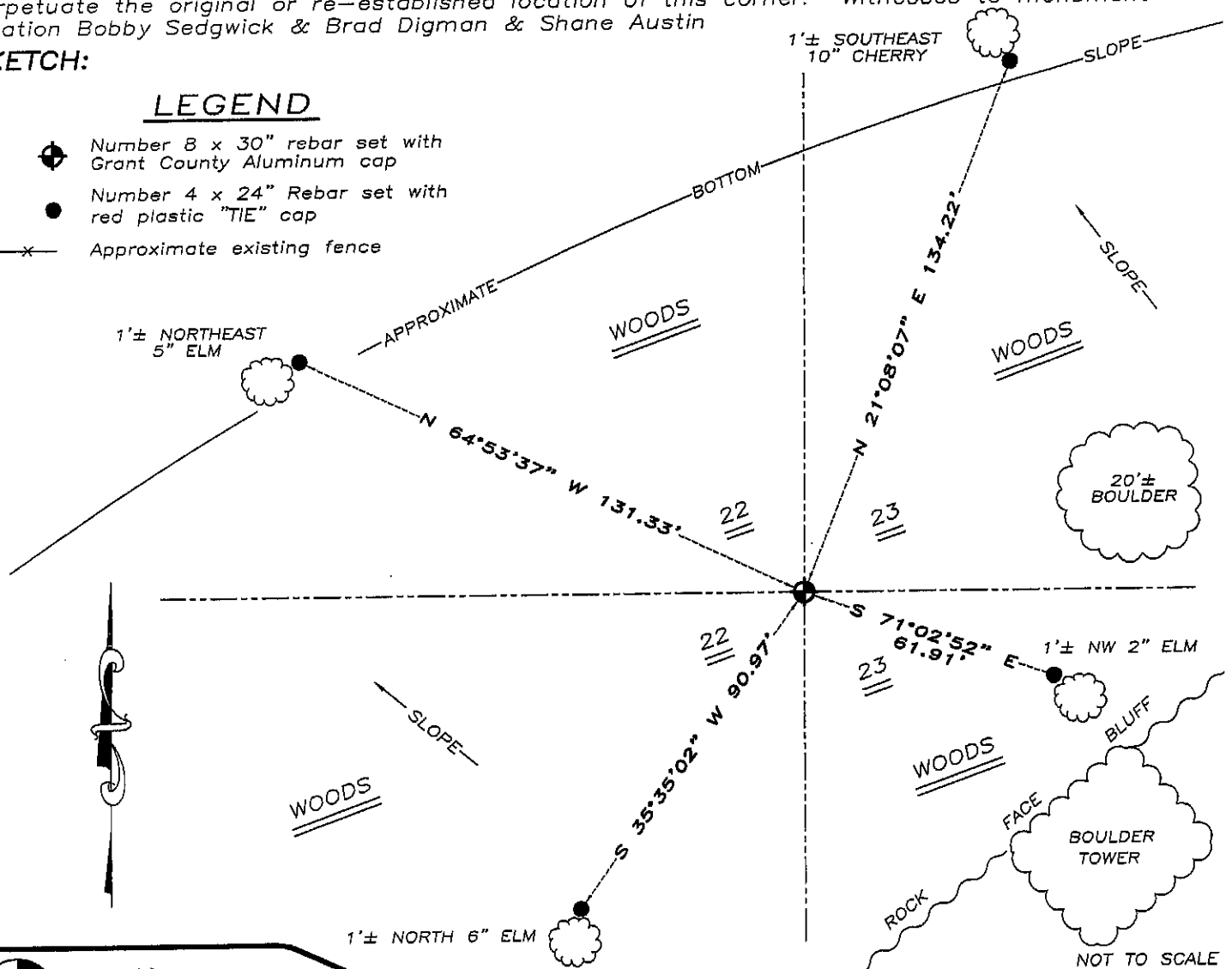
I found no evidence of the location of the original corner. I reset the corner proportionately and on-line between the Northeast and Southeast corners of Section 22. Verified this location using EDM & GPS methods.

DESCRIPTION OF CORNER AND WITNESS MONUMENTS, references and accessories used to perpetuate the original or re-established location of this corner. Witnesses to monument location Bobby Sedgwick & Brad Digman & Shane Austin

SKETCH:

LEGEND

- ⊕ Number 8 x 30" rebar set with Grant County Aluminum cap
- Number 4 x 24" Rebar set with red plastic "TIE" cap
- x- Approximate existing fence



Austin Engineering LLC

4211 HWY 81 E, LANCASTER, WI 53813
PHONE 608-723-6363 FAX 608-723-6702

JOB NUMBER 07S284
FIELDBOOK: TDSR, 2709
G:\T6NR6W\33
H:\TIE\T6NR6W\78

DRAWN BY: SW AUSTIN
APPROVED: LL AUSTIN