

OCT 26 1990

GRANT COUNTY GOVERNMENT CORNER RECORD

NW CORNER, SECTION 22, TOWNSHIP 6 NORTH, RANGE 6 WEST,
TOWN OF WYALUSING

TYPE OF MONUMENT: 1" SQUARE IRON BAR ELEVATION - M.S.L. DATUM

STATE PLANE COORDINATES: N

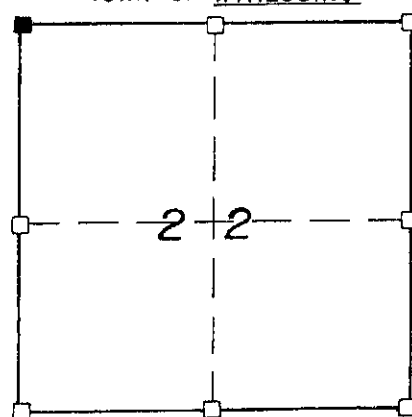
WISCONSIN SOUTH ZONE E

WITNESSES TO CORNER LOCATION

SEAN M. WALSH

PATRICK J. DEDERICH

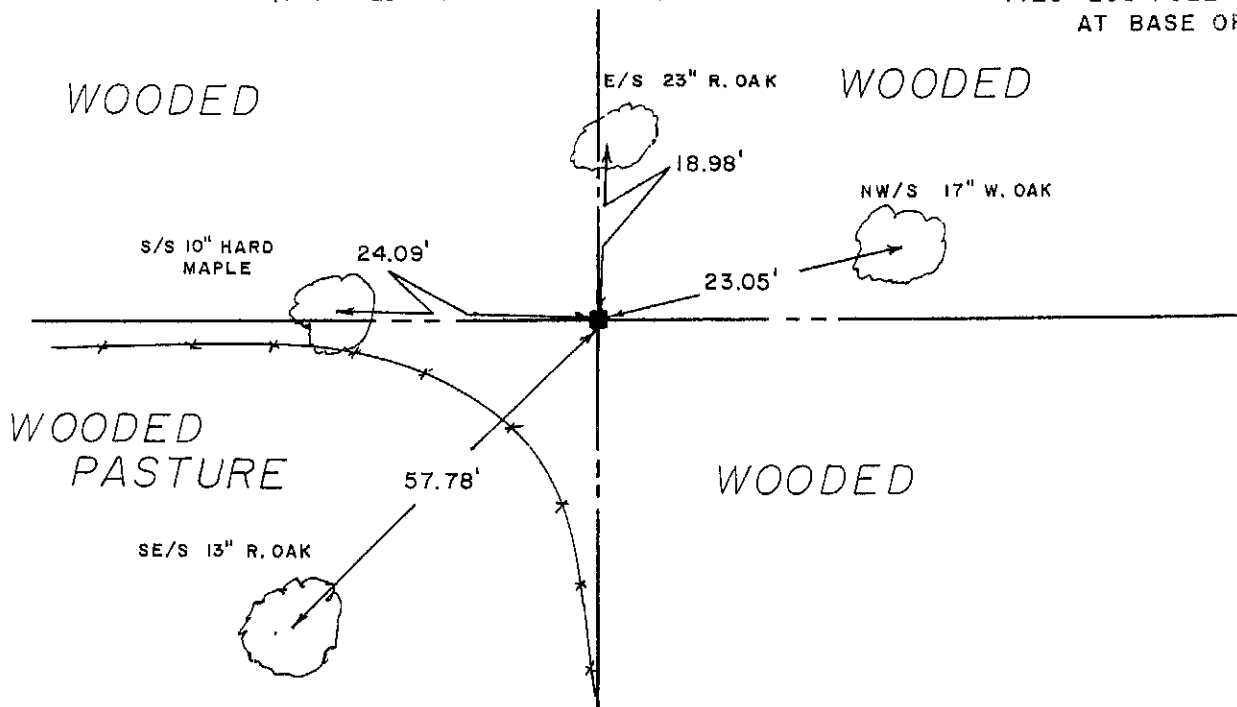
SECTION 22, T. 6 N, R. 6 W
TOWN OF WYALUSING



■ - CORNER LOCATION
TIES - 20d POLESPIKE IN BLAZE
AT BASE OF TREE

NORTH

TIE SKETCH
(SHOW ALL HELPFUL FEATURES)

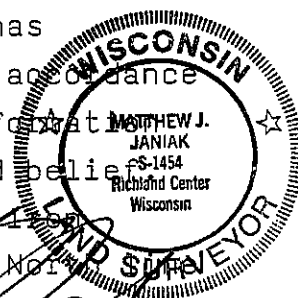


SURVEYOR'S CERTIFICATE

STATE OF WISCONSIN)
RICHLAND COUNTY) SS

SEAL S-1454

I, Matthew J. Janiak, DO HEREBY CERTIFY THAT the above corner has been established under my direction and supervision in accordance with the information contained hereon and that this information is correct to the best of my information, knowledge and belief. This corner was accepted at the location of a 1" square iron bar. This location fits very well with the rest of the North of Section 22.



DATED THIS 3rd DAY OF October, 19 90

REGISTERED LAND SURVEYOR

P.67