

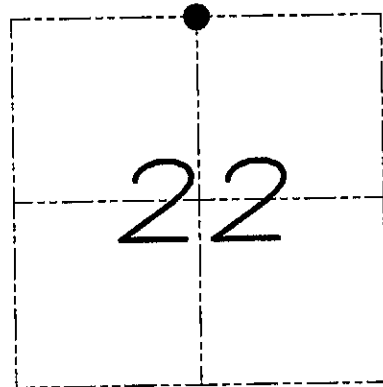
# U.S. PUBLIC LAND SURVEY MONUMENT RECORD

Section 22, Town 6 North Range 6 West, Town of Wyalusing, Grant County, Wisconsin

## CERTIFICATE

I, Larry L. Austin, do hereby certify that the corner location on this record was determined by me and/or under my direct supervision and that this U.S. public land survey monument record is correct and complete to the best of my knowledge and belief.

*Larry L. Austin*  
Larry L. Austin, S-1903



● = CORNER LOCATION

## HISTORY OF CORNER

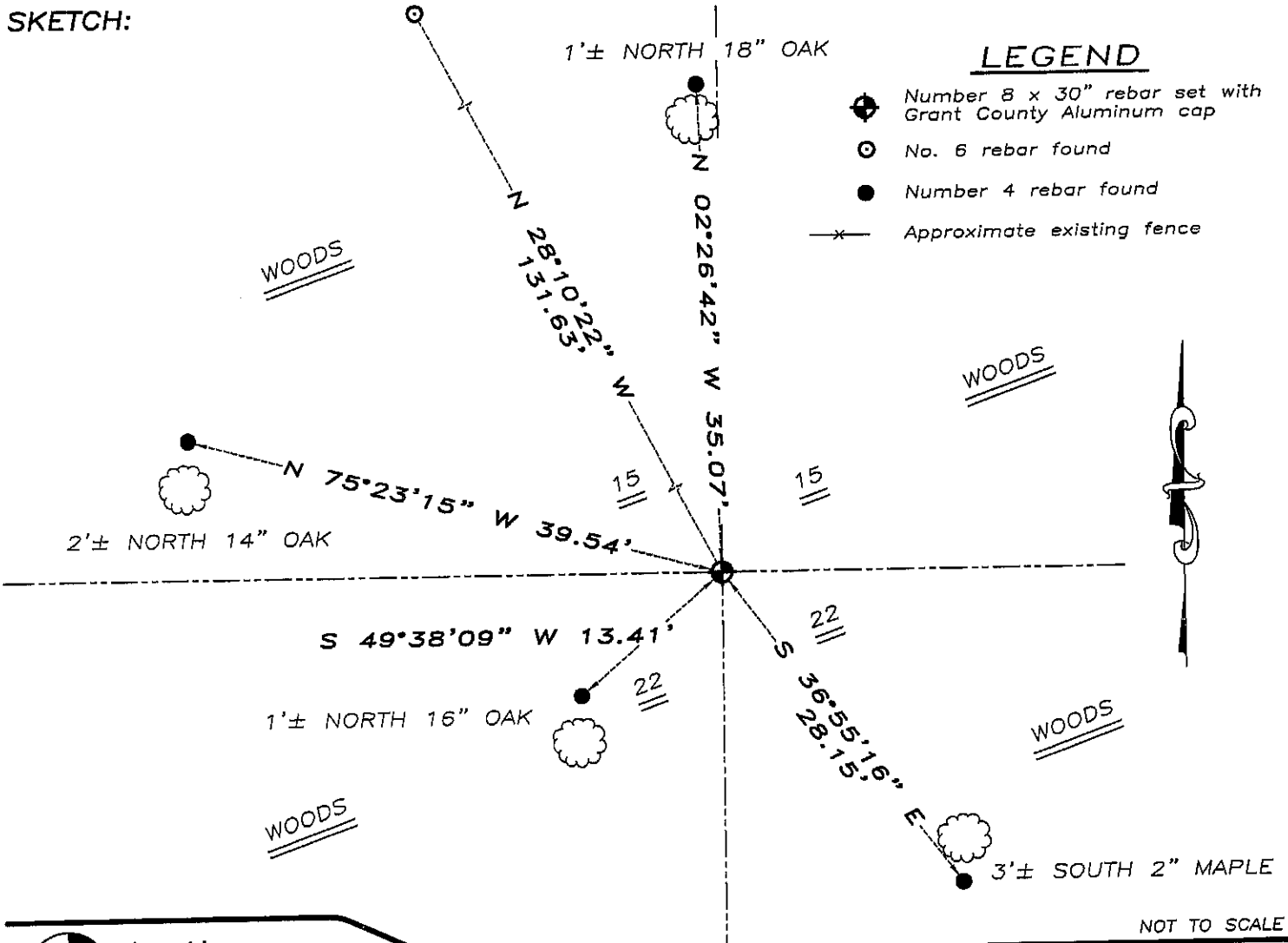
Corner was originally set in 1832 by Clark. In 1990 Janiak set a #6 iron bar. No other record of the corner was found.

## CORNER EVIDENCE FOUND

I found the No. 6 iron bar and determined it was in the wrong location. I reset the corner proportionately and on-line between the Northwest and Northeast corners of Section 22. Verified this location using EDM & GPS methods.

DESCRIPTION OF CORNER AND WITNESS MONUMENTS, references and accessories used to perpetuate the original or re-established location of this corner. Witnesses to monument location Bobby Sedgwick & Brad Digman & Shane Austin

## SKETCH:



## LEGEND

- Number 8 x 30" rebar set with Grant County Aluminum cap
- No. 6 rebar found
- Number 4 rebar found
- x— Approximate existing fence

NOT TO SCALE



**Austin Engineering LLC**

4211 HWY 81 E, LANCASTER, WI 53813  
PHONE 608-723-6363 FAX 608-723-6702

JOB NUMBER 07S284  
FIELDBOOK: TDSR, 2707  
G:\T6NR6W\33  
H:\TIE\T6NR6W\66

DRAWN BY: SW AUSTIN  
APPROVED: LL AUSTIN

OCT 26 1990

# GRANT COUNTY GOVERNMENT CORNER RECORD

N 1/4 CORNER, SECTION 22, TOWNSHIP 6 NORTH, RANGE 6 WEST, TOWN, CITY OR VILLAGE OF WYALUSING

TYPE OF MONUMENT: 3/4" X 24" IRON ROD ELEVATION - M.S.L. DATUM

STATE PLANE COORDINATES: N

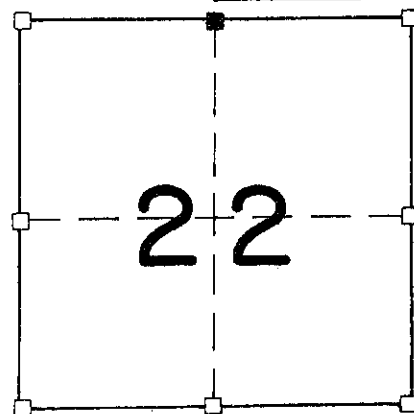
WISCONSIN SOUTH ZONE E

WITNESSES TO CORNER LOCATION

SEAN M. WALSH

PATRICK J. DEDERICH

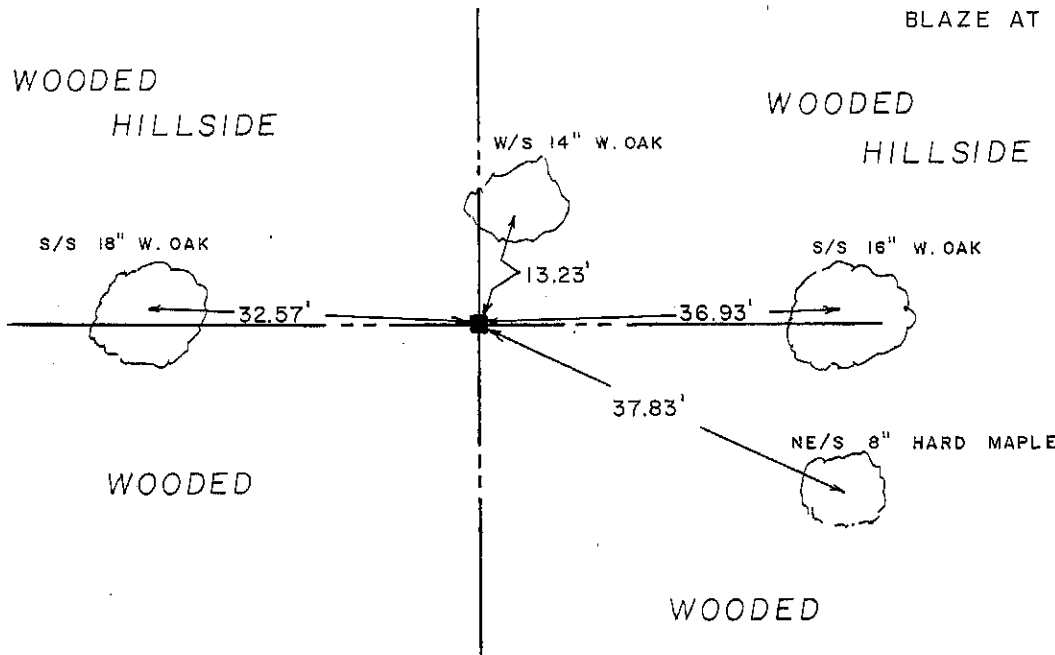
SECTION 22, T 6 N, R 6 W TOWN OF WYALUSING



CORNER LOCATION TIES - 20d POLESPIKE IN BLAZE AT BASE OF TREE



TIE SKETCH (SHOW ALL HELPFUL FEATURES)



SURVEYOR'S CERTIFICATE STATE OF WISCONSIN) RICHLAND COUNTY )SS

SEAL S-1454

I, Matthew J. Janaik, DO HEREBY CERTIFY THAT the above corner has been established under my direction and supervision in accordance with the information contained hereon and that this information is correct to the best of my knowledge, information and belief. This corner was set half way between the Northeast and Northwest corners of Section 22 as no other evidence could be located.



DATED THIS 3rd DAY OF OCTOBER, 1990

REGISTERED LAND SURVEYOR

Handwritten number 066