

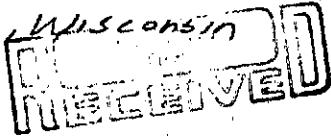
U. S. PUBLIC LAND SURVEY MONUMENT RECORD

INSTRUCTIONS: This record shall show the location of the corner and shall include all of the following nine elements (a through i).

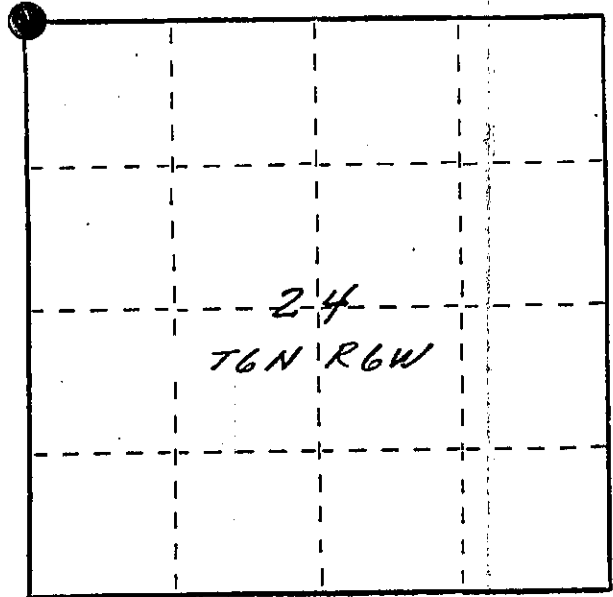
(a) Identify the corner by reference to the U.S. public land survey system.

● = Corner monument restored.

NW corner section 24 T6N R6W
of the 4th P.M.
Town of Wyalusing
Grant County, Wisconsin



MAR 2 1988

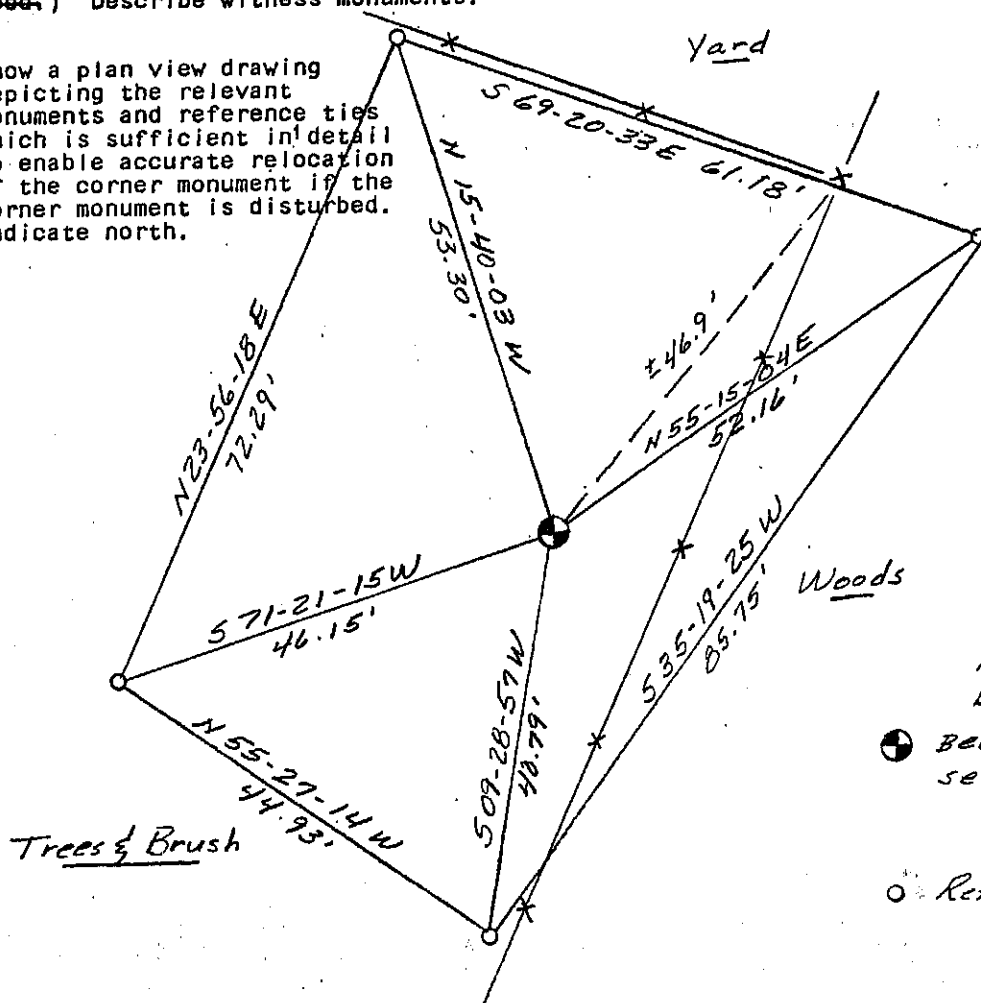


(b) Describe any record evidence, monument evidence, occupational evidence, testimonial evidence or any other material evidence you considered, and whether the monument was found or placed.

Monument was set using a 1984 survey done by Paul C. Brashaw and comparing his survey with original survey calls on a spring and a creek. A comparison with an unrecorded iron found to the west was used as a check. Research done on surveys adjacent to the corner provided no information on its location. No occupational evidence existed at corner location to consider. No original bearing trees were found.

(c) In the plan view drawing below, provide reference ties to at least 4 witness monuments, or, if the location is within a municipality, to at least 2 witness monuments. (Witness monuments shall be made of concrete, natural stone, iron or other equally durable material, ~~except wood.~~) Describe witness monuments.

(d) Show a plan view drawing depicting the relevant monuments and reference ties which is sufficient in detail to enable accurate relocation of the corner monument if the corner monument is disturbed. Indicate north.



No Scale
Bearings - Wis. Grid
● Berntsen A-1 monument set 0.1' below grade.

○ Ref. mons - 3/4" x 2 1/2" ribarw/cup

