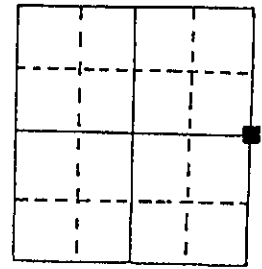


U.S. PUBLIC LAND SURVEY MONUMENT RECORD

Note: This form is intended and designed to fulfill all requirements of Wisconsin Administrative Code, Chapter A-E 5.02, U.S. Public Land Survey Monument Record (3) (a) (b) (c) (d) (e) (f) (g) (h) (i). An additional sheet may be added if necessary to conform with said requirements.

RECEIVED

(a) Corner location: Township 6 North
 Range 6 ~~East~~ West



Town/City/Village WYALUSING
 County GRANT

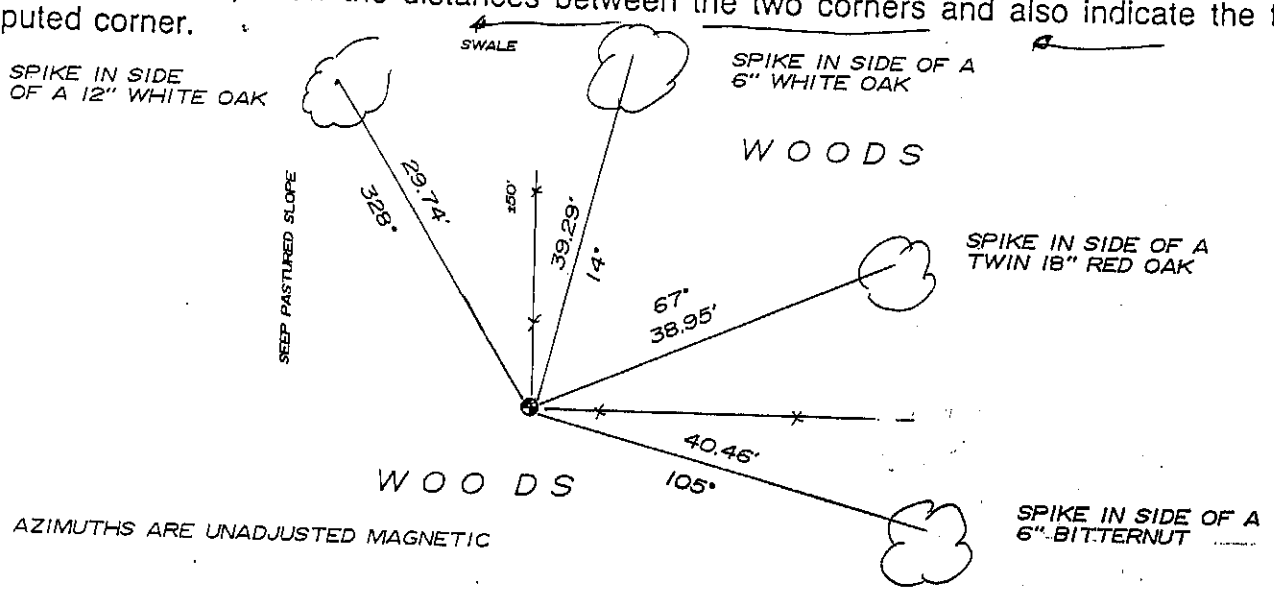
JUN 13 1991

Section 13

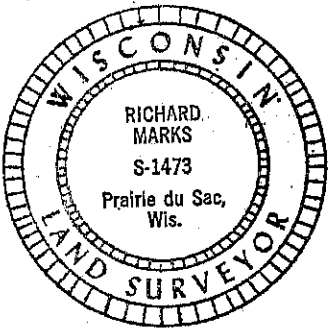
(b) (f) (g) (h) Description of monument found at this corner and if it was accepted, state all evidence (material, testimonial, occupational, plats, records, other monuments) used as a basis for accepting. If not accepted or if nothing was found, state evidence used as basis for establishing location. If reestablished through lost corner proportionate methods, indicate all monuments, distances and directions used to establish.

I COULD NOT FIND ANY SURVEY RECORDS PERTAINING TO THIS CORNER SINCE THE ORIGINAL SURVEY. THE ENTIRE AREA HAS BEEN LOGGED NUMEROUS TIMES SINCE THEN. IN TALKING TO AREA RESIDENTS I FOUND THAT THE FENCE CORNER AT THIS LOCATION HAS ALWAYS BEEN MAINTAINED IN ITS PRESENT LOCATION AND USED BY THE ADJOINING PROPERTY OWNERS AS THE CORNER. I SET A 3/4" X 24" SOLID ROUND IRON ROD AT THE FENCE CORNER.

(c) (d) (e) Plan view of corner with ties to at least 4 witness monuments. If in disagreement with previously established corner, show the distances between the two corners and also indicate the ties to the disputed corner.



(i) I, RICHARD MARKS
 (type or print name) certify that the corner location on this record was determined by me or under my direction and control and that this U.S. Public Land Survey Monument Record is correct and complete to the best of my knowledge and belief.
 Signature [Handwritten Signature] Date 5/30/1991



Affix seal here

P. 60