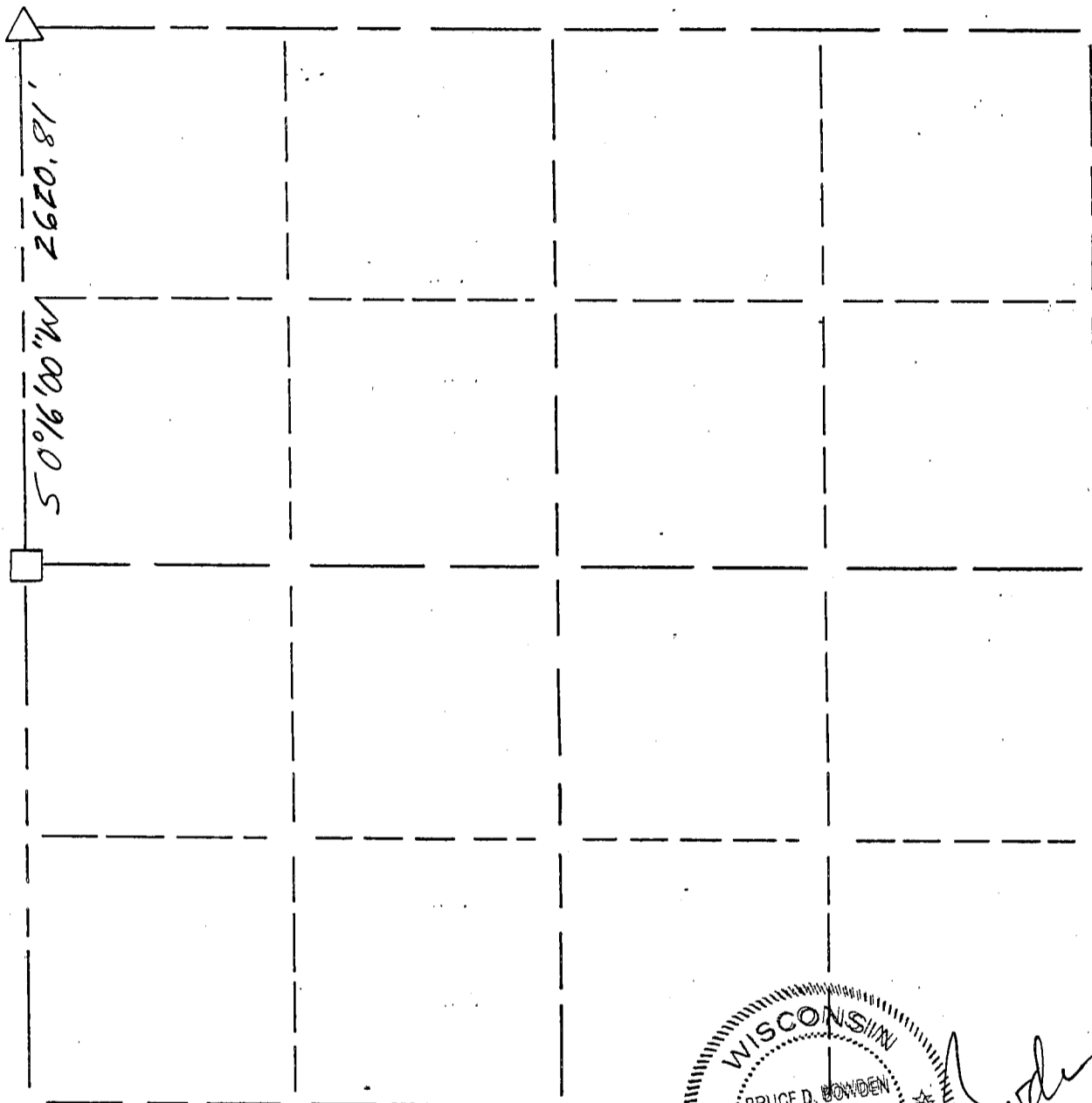


GRANT COUNTY

Section Summary

$\frac{10}{\text{SECTION}} - \frac{6}{\text{TOWN}} - \frac{5W}{\text{RANGE}}$



WISCONSIN
 BRUCE D. BOWDEN
 S-1250
 DODGEVILLE
 WI.
 LAND SURVEYOR
[Signature]
 Dec 1, 1999

LEGEND

- △ COUNTY MONUMENT - SET
- STONE OR CONCRETE MONUMENT
- OTHER (specify) _____

NOTE:

Relationships of all section corners to other section corners shall be shown hereon by bearing and distance or grid coordinates

Show or describe bearing reference
 The West line of the NW 1/4 of Section 10 bears as shown above according to the Grant County Coordinate System