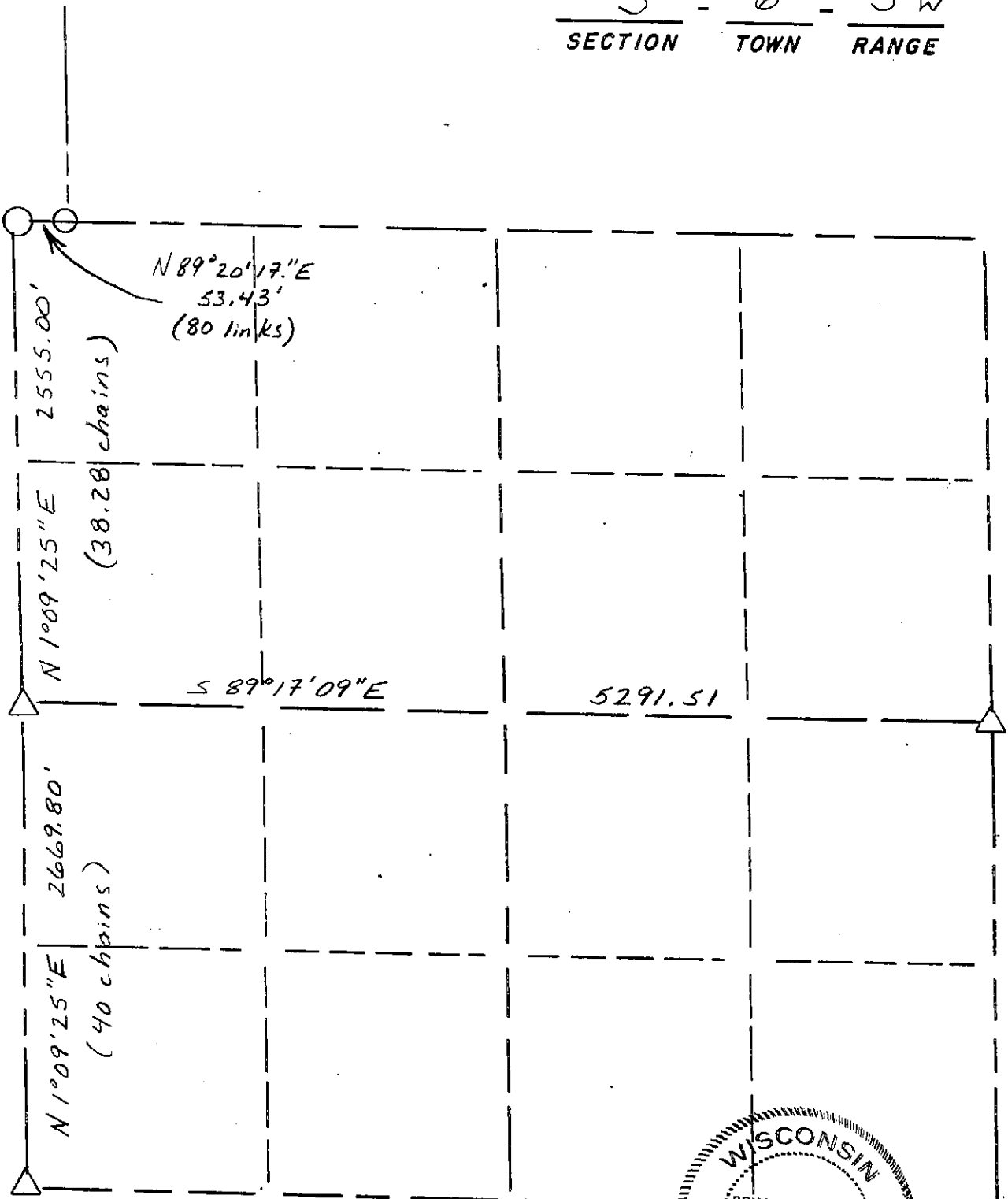


# GRANT COUNTY

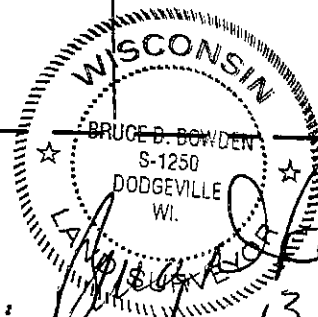
## Section Summary

$\frac{3}{\text{SECTION}} - \frac{6}{\text{TOWN}} - \frac{5W}{\text{RANGE}}$



### LEGEND

- △ COUNTY MONUMENT
- STONE OR CONCRETE MONUMENT
- OTHER (specify) 1" iron pipe
- ( ) recorded as \_\_\_\_\_
- \_\_\_\_\_
- \_\_\_\_\_
- \_\_\_\_\_



### NOTE:

Relationships of all section corners to other section corners shall be shown hereon by bearing and distance or grid coordinates

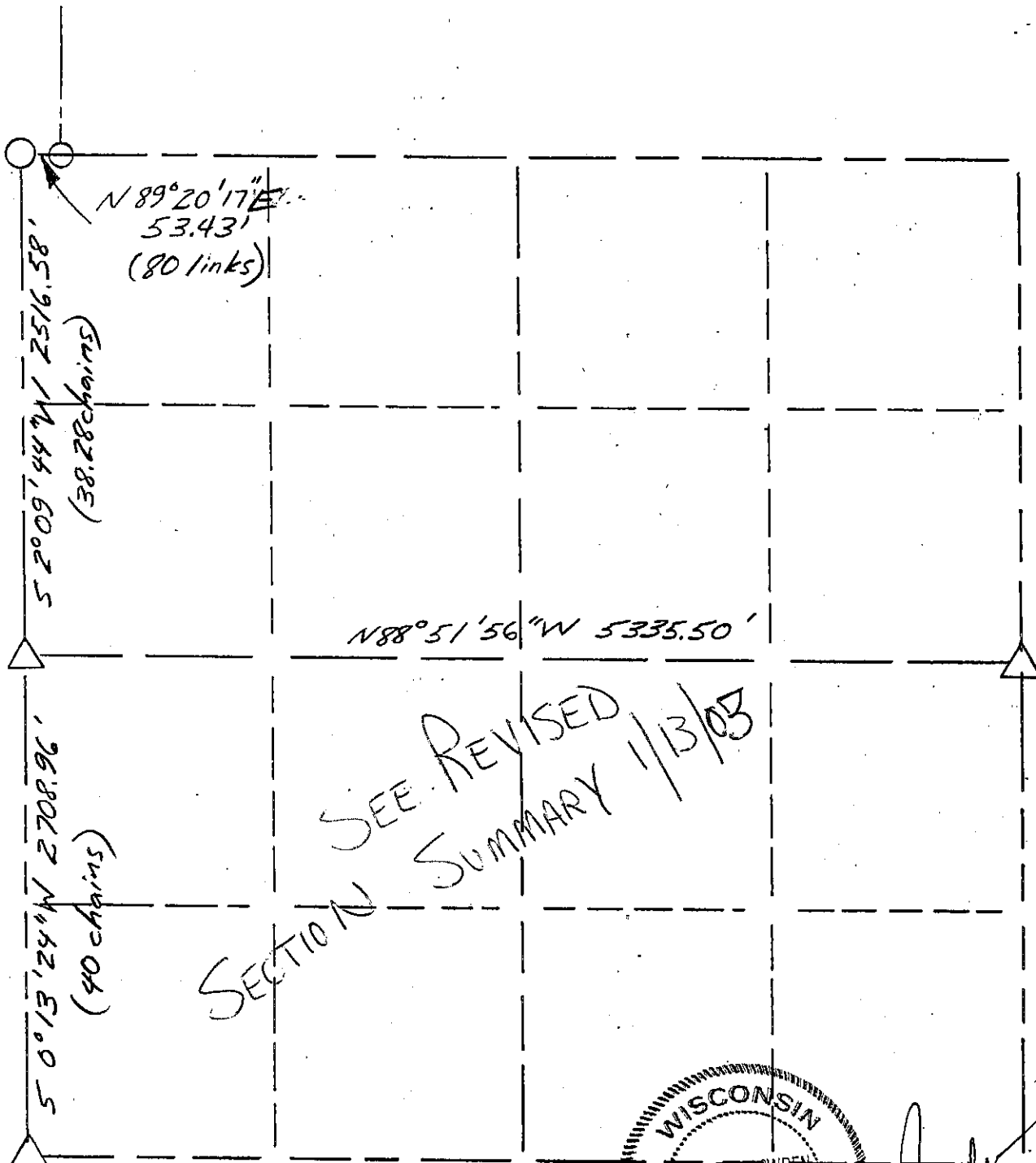
Show or describe bearing reference

The West line of the SW 1/4 bears as shown according to the Grant County Coordinate System.

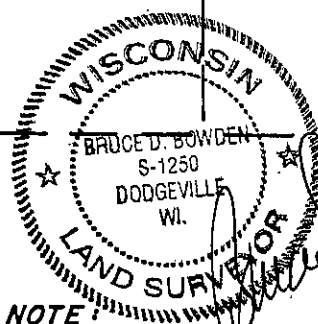
# GRANT COUNTY

## Section Summary

3 - 6 - 5W  
SECTION      TOWN      RANGE



SEE REVISED  
SECTION SUMMARY 1/13/03



*Bruce D. Bowden*  
Dec 1, 1999

### LEGEND

- △ COUNTY MONUMENT - SET
- STONE OR CONCRETE MONUMENT
- OTHER (specify) 1" iron pipe - found
- ( ) recorded as

### NOTE:

Relationships of all section corners to other section corners shall be shown hereon by bearing and distance or grid coordinates

Show or describe bearing reference

The West line of the SW 1/4 bears as shown according to the Grant County Coordinate System.