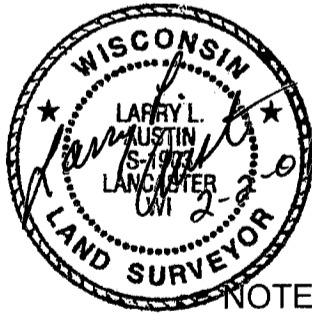
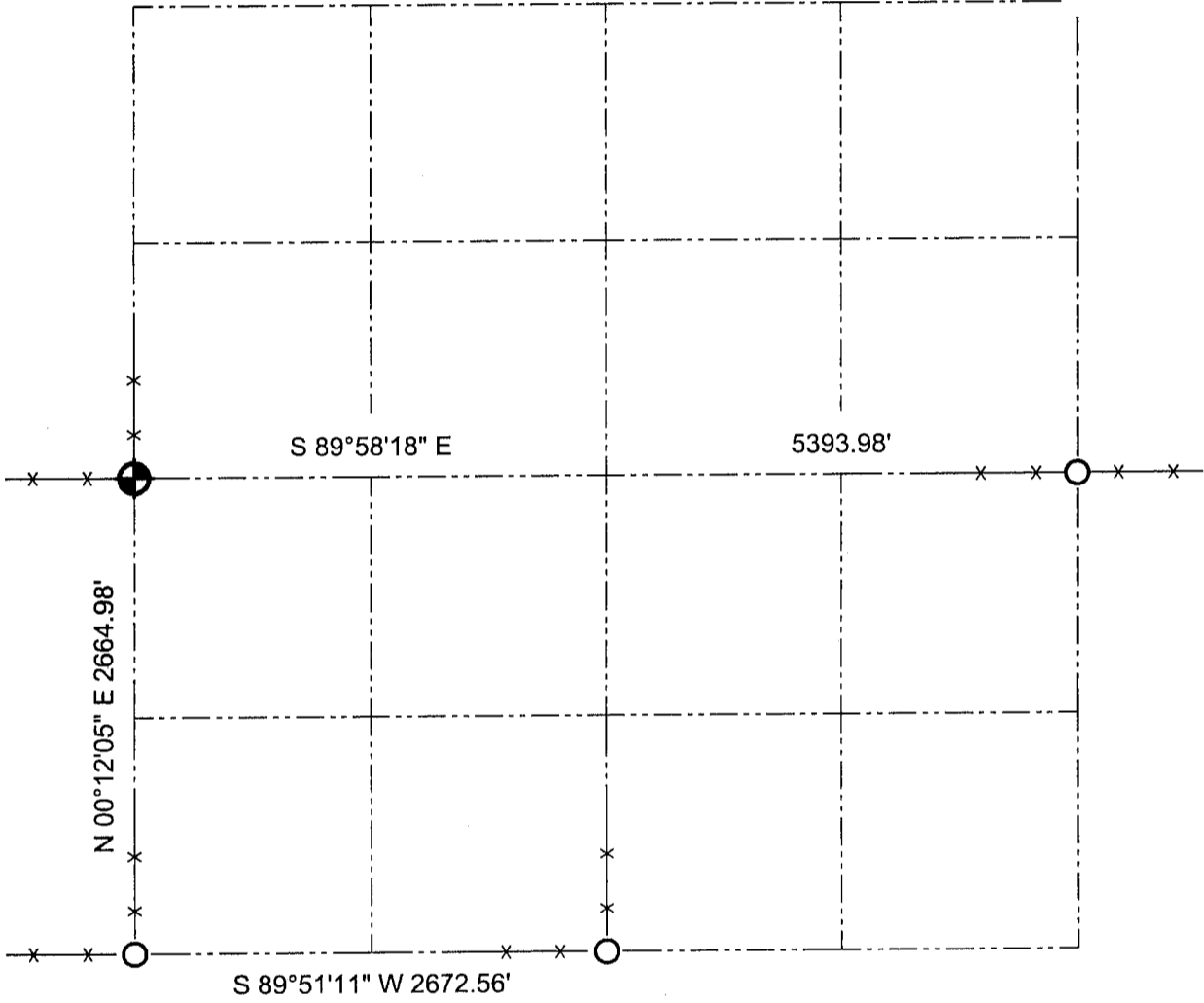




GRANT COUNTY SECTION SUMMARY

$\frac{22}{SECTION} - \frac{6N}{TOWN} - \frac{5W}{RANGE}$



LEGEND

-  Number 8 x 30" rebar set with Grant County Aluminum Cap
-  Number 6 iron bar found

NOTE:

Relationships of all section corners to other section corners shall be shown hereon by bearing and distance or grid coordinates.
~Bearing reference below~



Bearings referenced to the West line of the Southwest Quarter of Section 22, which is assumed to bear N 00°12'05" E.

AUSTIN ENGINEERING, LLC
4211 HWY 81 E, LANCASTER, WI 53813
PHONE 608-723-6363 FAX 608-723-6702

FIELDBOOK: SDR33, 9805
G:\T6NR5W\22
C:\SC14\SWA\TIE\T6NR5W\22SUM

DRAWN BY: SW AUSTIN
APPROVED: LL AUSTIN
CREW: BS - SB - SA - TF