

65103

U.S. PUBLIC LAND SURVEY MONUMENT RECORD - GRANT COUNTY, WI

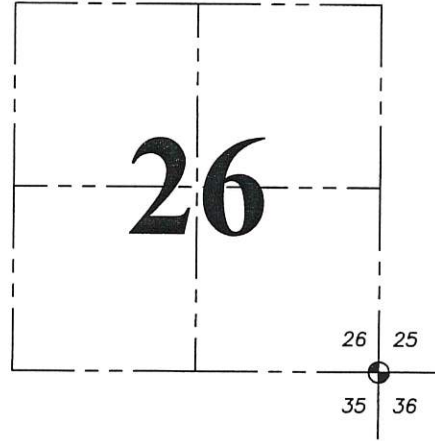
Section 26, Town 6 North Range 5 West, Town of Patch Grove (a)

NOTE: This form is intended and designed to fulfill all requirements of the Wisconsin Administrative Code Chapter A-E 7.08, U.S. Public Land Survey Monument Record (3) (a) (b) (c) (d) (e) (f) (g) (h) (i).

CERTIFICATE: (i)

I, Aaron J. Austin, Wisconsin Professional Land Surveyor, do hereby certify that the corner location on this record was determined by me and/or under my direct supervision and that this U.S. Public Land Survey Monument Record is correct and complete to the best of my knowledge and belief.

Grant County Point I.D.: 65103



Dated this 8th day of June, 2018.

Aaron J. Austin
Aaron J. Austin, S-2922
LANCASTER, WI

Grant County Coordinates:
NAD 83 (2011)
Northing: 564,435.93
Easting: 792,139.02

⊙ = CORNER LOCATION

HISTORY OF CORNER ESTABLISHMENT:

Original corner was set by Parke in 1833.
Ron Hayen reset the corner and prepared a Survey Monument Record dated 12-21-1987.

DESCRIPTION OF CORNER EVIDENCE FOUND: (b) (f) (g) (h)

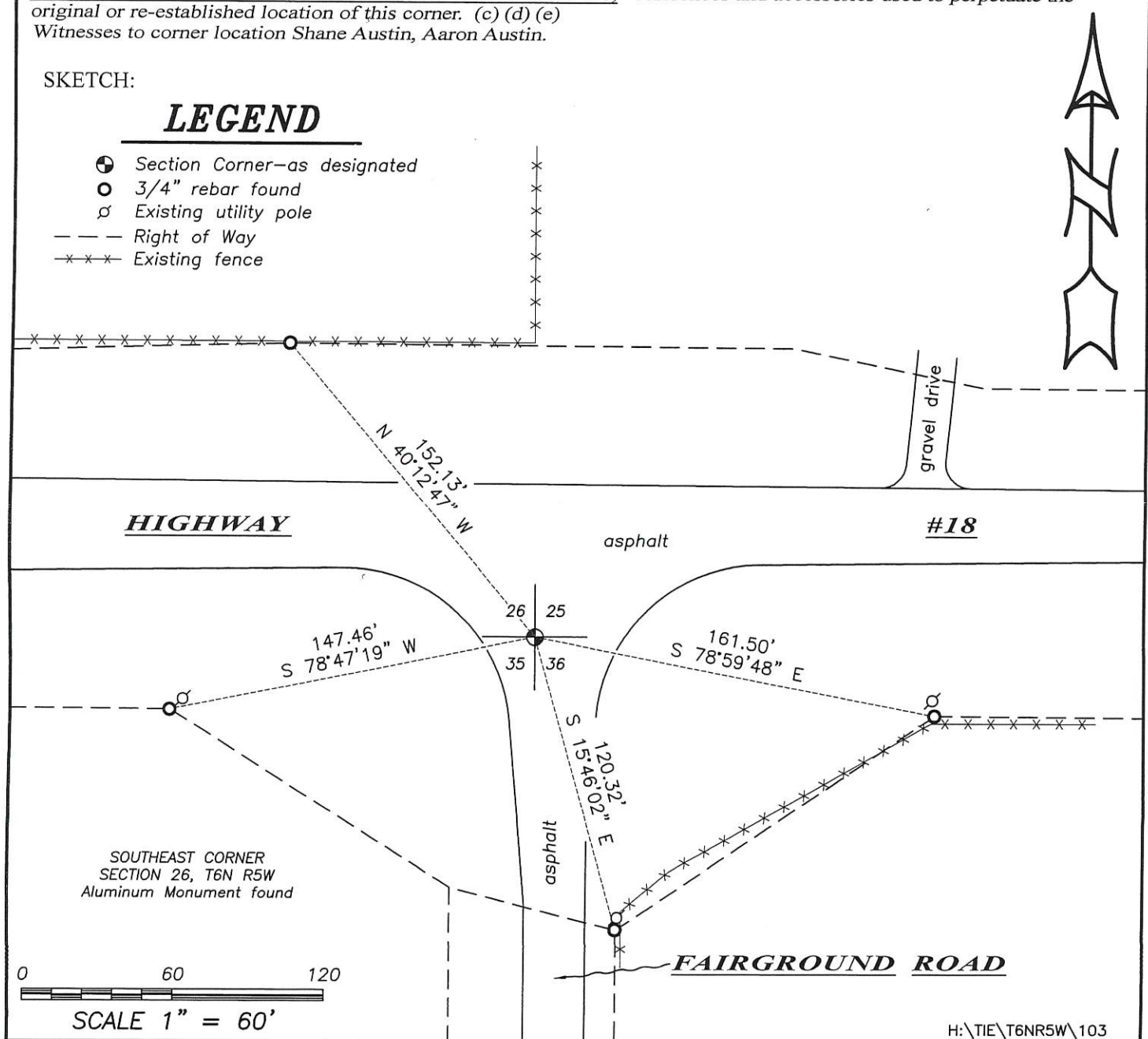
I found an Aluminum Monument in a manhole. I set four new witness corners after I verified the Monument's location with G.P.S. and E.D.M. methods.

DESCRIPTION OF CORNER AND WITNESS MONUMENTS: references and accessories used to perpetuate the original or re-established location of this corner. (c) (d) (e)
Witnesses to corner location Shane Austin, Aaron Austin.

SKETCH:

LEGEND

- ⊙ Section Corner—as designated
- 3/4" rebar found
- ⊘ Existing utility pole
- - - Right of Way
- x-x-x Existing fence



CERTIFIED LAND CORNER

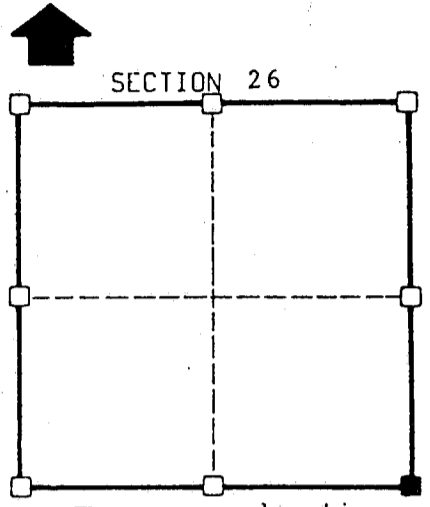
STATE OF WISCONSIN)
 COUNTY OF GRANT) S.S.

CERTIFICATE

I, Ronald R. Hayden, do hereby certify that on the 8th day of December 1987, I found (evidence) (~~no evidence~~) of the SE corner of Section 26, T 6 N, R 5 W, Fourth Principal Meridian, and I re-established said corner according to the Wisconsin Statutes as shown and described hereon.

Dated this 21 day of December 1987

Ronald R. Hayden



T 6 N R 5 W

Town of: Patch Grove

History of original corner establishment:

Town lines were established by Lucious Lyon.
 Subdivision by Harvey Parke in 1833.

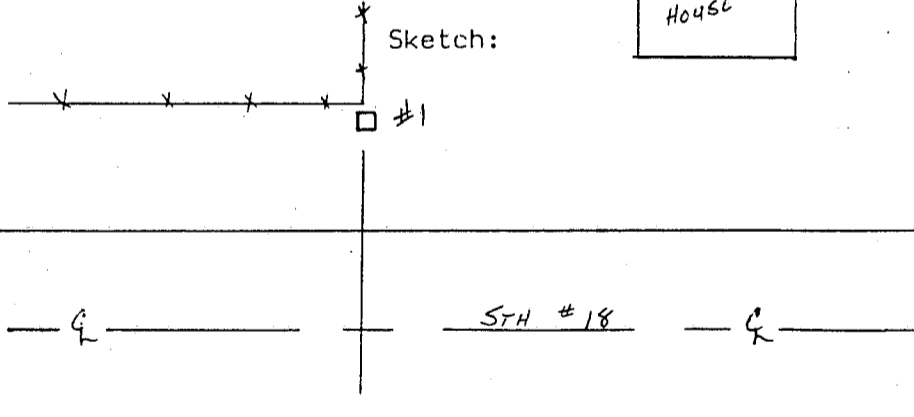
Description of corner evidence found:

See back.

Description of corner and witness monuments, references and accessories used to perpetuate the original or re-established location of this corner:

Witnesses to corner location:

Ronald R. Hayden
Carol S. Hayden



See back for witness descriptions.

CONTROL ORDER

Horizontal

Vertical

WISCONSIN COORDINATE SYSTEM

Corner	East (X)	North (Y)	Elevation (Z)	Zone
Control Sta. Name				

CORNER EVIDENCE FOUND

I found no physical evidence of a corner, but I did find occupational evidence and after running an extensive control traverse and finding existing corner evidence in Sections 25, 26, 27, 34, 35, and 36, I determined the corner location. Set was a 3/4" X 30" round iron bar set in the west edge of the pavement of Fairground Road. After an extensive search at the Grant County Court House, no resurveying evidence was found since the original survey.

WITNESS DESCRIPTIONS

- 1) PK Nail set in the east side of a power pole which bears: S 56° E 46.32'.
- 2) Set masonry nail in the top of a yellow right of way post which bears: S 40° W 39.68'.
- 3) Used an iron bolt in the east side of a power pole which bears: S 45° W 31.02'.
- 4) Right of way sign and post which bears: N 00° E 101.77'.