

GRANT COUNTY CERTIFIED LAND CORNER

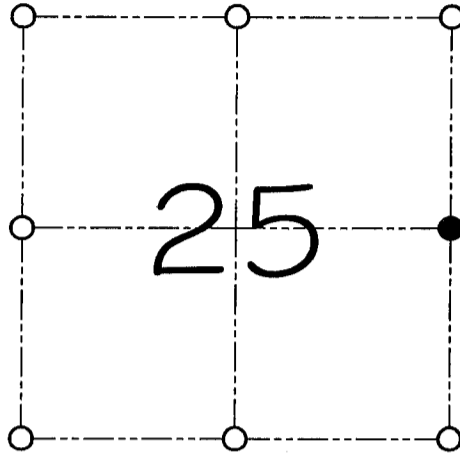
CORNER NUMBER 100

CERTIFICATE:

I, Larry L. Austin, do hereby certify that on the 14th day of February, 2000, I found evidence of the East 1/4 corner of Section 25, Town 6 North, Range 5 West, of the 4th Principal Meridian, and I re-established said corner according to the Wisconsin statutes as shown and described hereon.

Dated this 20th day of March, 2000

Larry L. Austin
Larry L. Austin S-1903



● = CORNER LOCATION

**EAST 1/4 CORNER OF
SECTION 25, T 6 N R 5 W
TOWN OF MOUNT HOPE**

HISTORY OF ORIGINAL CORNER ESTABLISHMENT:

Corner was originally set in 1832 by Sibley.
In 1995 Robert Lampman tied to the corner.

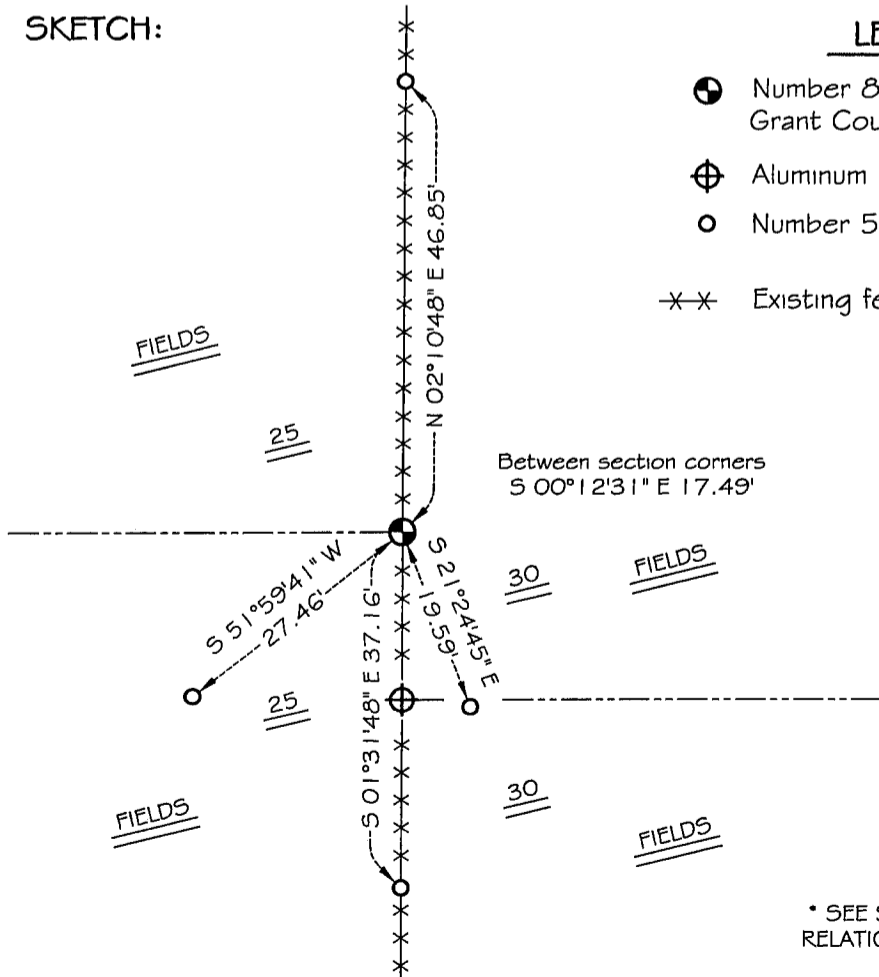
DESCRIPTION OF CORNER EVIDENCE FOUND:

Lampman used the West 1/4 of Section 30, T6N R4W and didn't use the proportioned offset. I set the corner at the proportioned offset from the West 1/4 of Section 30, T6N R4W. Verified this location using E.D.M. and G.P.S. methods.

DESCRIPTION OF CORNER AND WITNESS MONUMENTS, references and accessories used to perpetuate the original or re-established location of this corner

WITNESS TO THE CORNER LOCATION: SHANE AUSTIN & SHELBY BLINDERT

SKETCH:



LEGEND

- Number 8 by 30" rebar set with Grant County aluminum cap
- ⊕ Aluminum monument found
- Number 5 iron bar found
- ×× Existing fence location



* SEE SECTION SUMMARY FOR *
RELATIONSHIP TO AREA CORNERS