

65090

U.S. PUBLIC LAND SURVEY MONUMENT RECORD - GRANT COUNTY, WI

Section 20, Town 6 North Range 5 West, Town of Patch Grove (a)

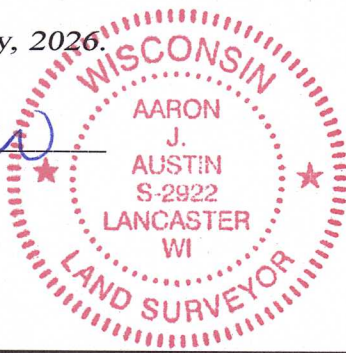
NOTE: This form is intended and designed to fulfill all requirements of the Wisconsin Administrative Code Chapter A-E 7.08, U.S. Public Land Survey Monument Record (3) (a) (b) (c) (d) (e) (f) (g) (h) (i).

CERTIFICATE: (i)

I, Aaron J. Austin, Wisconsin Professional Land Surveyor, do hereby certify that the corner location on this record was determined by me and/or under my direct supervision and that this U.S. Public Land Survey Monument Record is correct and complete to the best of my knowledge and belief.

Dated this 5th day of February, 2026.

Aaron J. Austin
Aaron J. Austin, S-2922



⊕ = CORNER LOCATION

Grant County Coordinates:
NAD 83 (2011)
Northing: 569,867.51
Easting: 743,442.99

HISTORY OF CORNER ESTABLISHMENT:

Original corner was set in 1833 by Harvey Parke. Timothy Moore set a Berntsen Monument and prepared a Survey Monument Record dated 10-19-1987.

DESCRIPTION OF CORNER EVIDENCE FOUND: (b) (f) (g) (h)

I found a broken Aluminum Monument and replaced it with a 1" x 24" Rebar at the recorded distances from two witness corners. I found an additional witness corner and set one more after I verified the Monument's location with G.P.S. and E.D.M. methods.

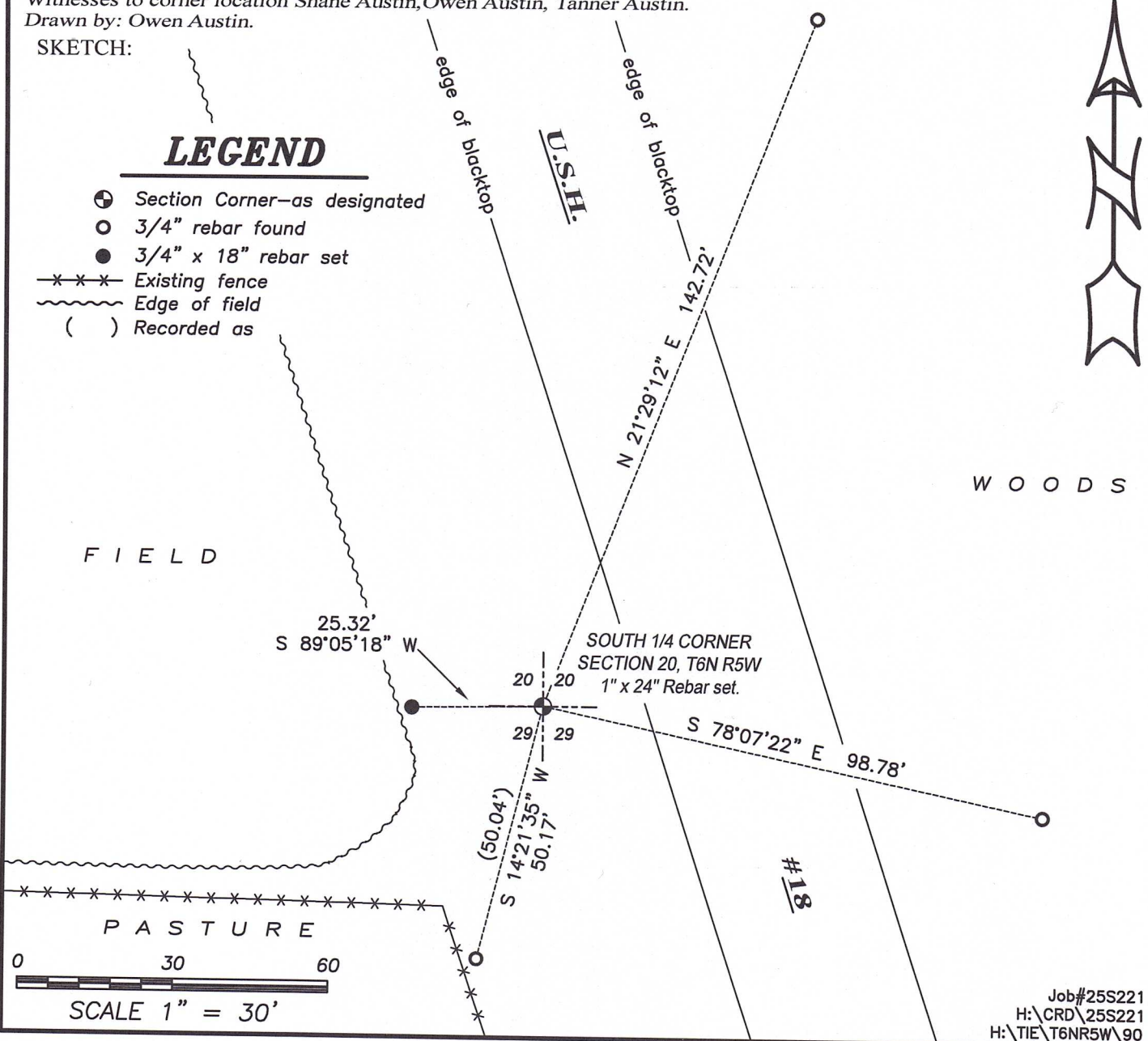
DESCRIPTION OF CORNER AND WITNESS MONUMENTS, references and accessories used to perpetuate the original or re-established location of this corner. (c) (d) (e)

Witnesses to corner location Shane Austin, Owen Austin, Tanner Austin.
Drawn by: Owen Austin.

SKETCH:

LEGEND

- ⊕ Section Corner—as designated
- 3/4" rebar found
- 3/4" x 18" rebar set
- x-x-x- Existing fence
- ~~~~~ Edge of field
- () Recorded as



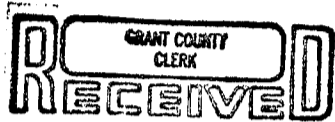
Job#25S221
H:\CRD\25S221
H:\TIE\T6NR5W\90

U. S. PUBLIC LAND SURVEY MONUMENT RECORD

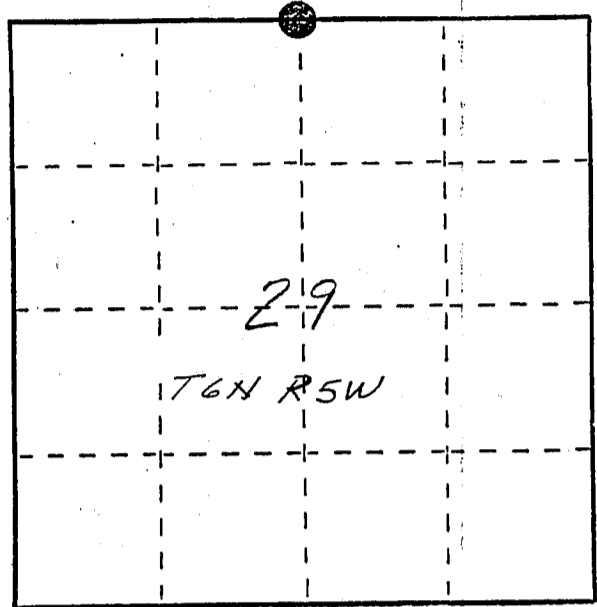
INSTRUCTIONS: This record shall show the location of the corner and shall include all of the following nine elements (a through i).

- (a) Identify the corner by reference to the U.S. public land survey system.
- = Corner monument restored.

*N 1/4 corner section 29 T6N R5W
of the 4th P.M.
Town of Patch Grove
Grant County, Wisconsin*



MAR 2 1988

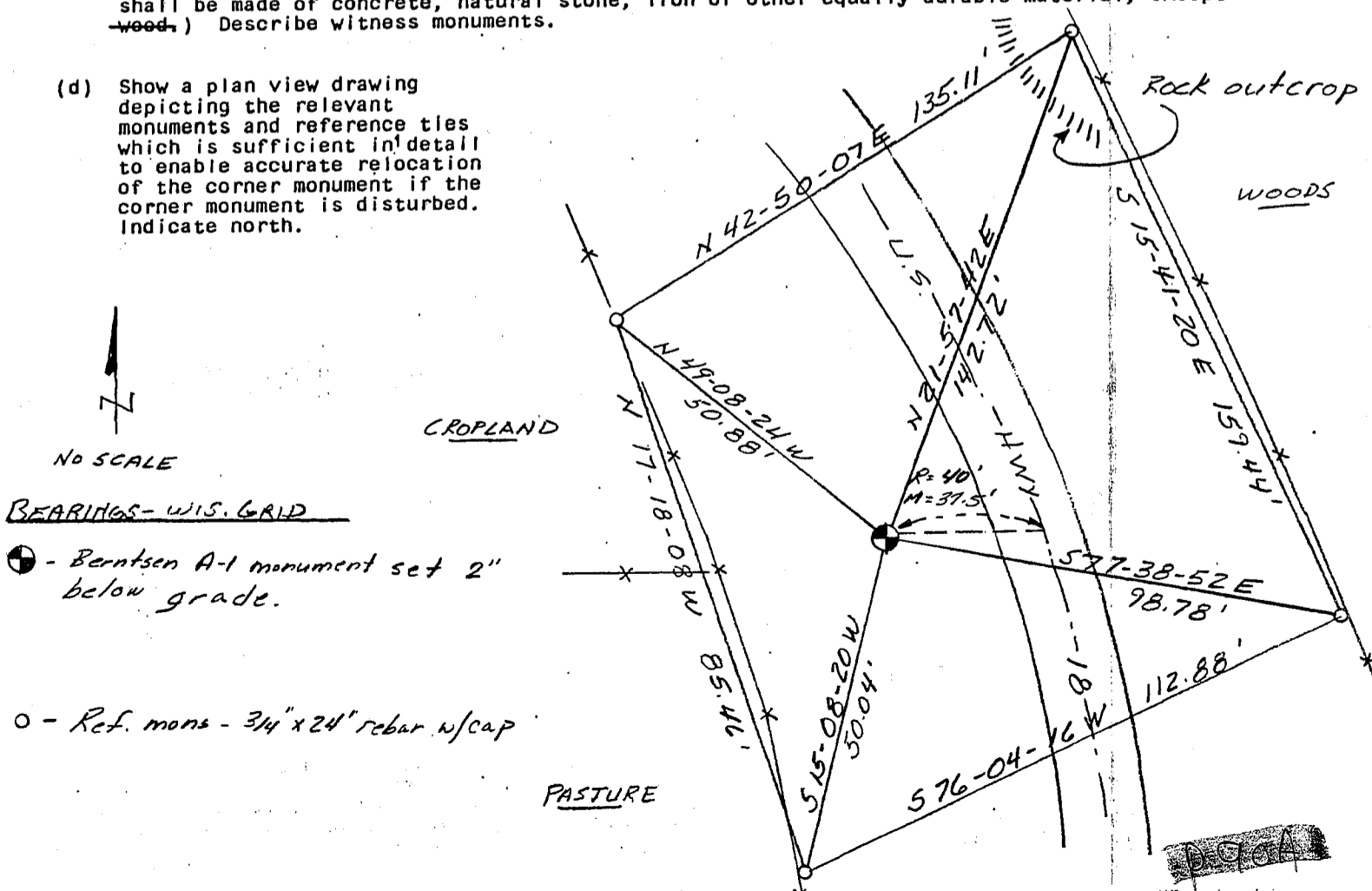


- (b) Describe any record evidence, monument evidence, occupational evidence, testimonial evidence or any other material evidence you considered, and whether the monument was found or placed.

Monument was set on line between the NW and NE corners and half way in between them. Corner location agrees closely with existing north-south fence line and with the 1939 highway right of way plat for Division Job No. 9561. No original bearing trees were found.

- (c) In the plan view drawing below, provide reference ties to at least 4 witness monuments, or, if the location is within a municipality, to at least 2 witness monuments. (Witness monuments shall be made of concrete, natural stone, iron or other equally durable material, ~~except wood.~~) Describe witness monuments.

- (d) Show a plan view drawing depicting the relevant monuments and reference ties which is sufficient in detail to enable accurate relocation of the corner monument if the corner monument is disturbed. Indicate north.



BEARINGS - WIS. GRID

● - Berntsen A-1 monument set 2" below grade.

○ - Ref. mons - 3/4" x 24" rebar w/cap

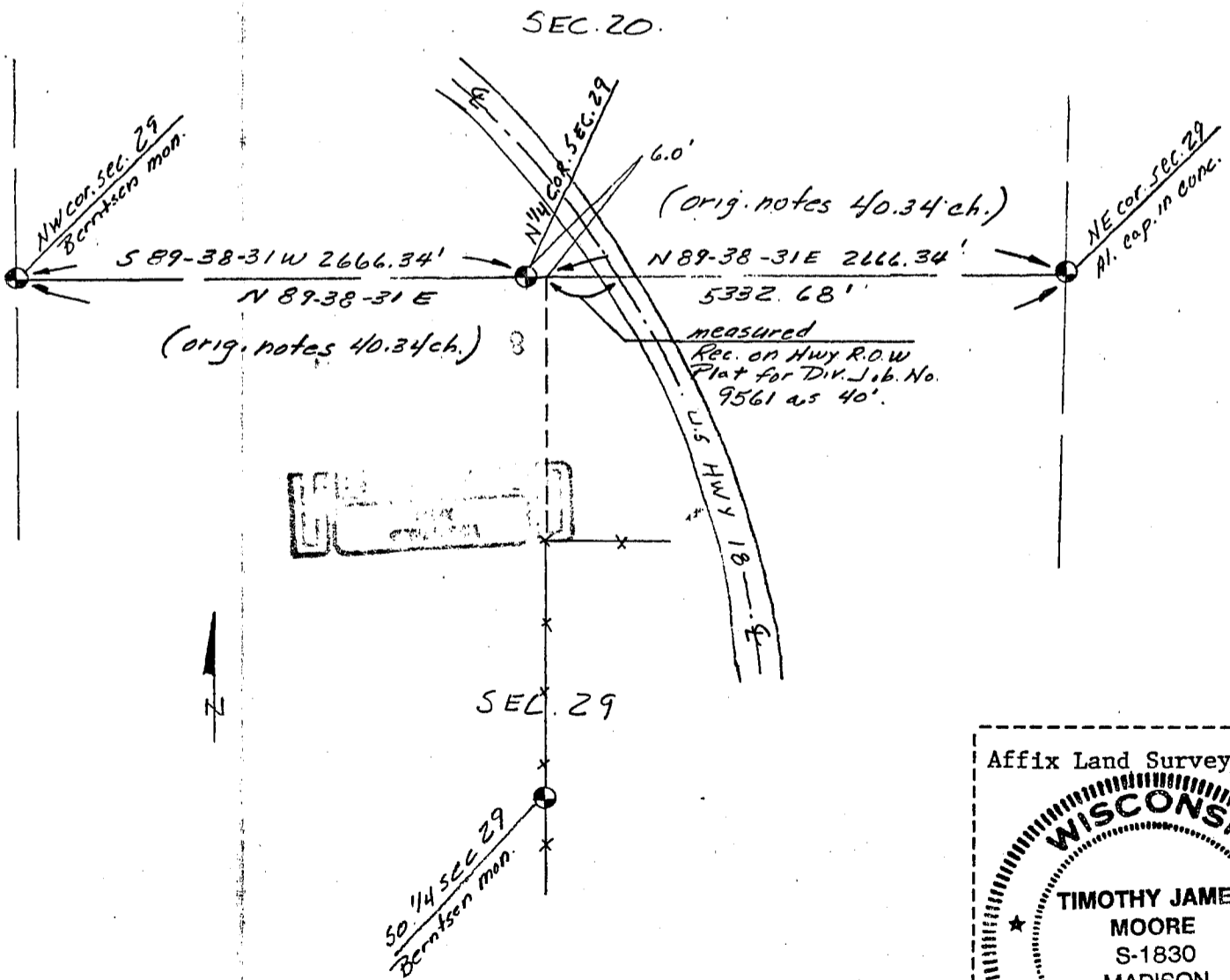
1976A

(e) Describe any material discrepancy between the location of the corner as restored or reestablished and the location of that corner as previously restored or reestablished by distance and direction. Show the discrepancy on the plan view drawing under (d), above. Show the distances between the corner as previously restored or reestablished and (1) the corner as restored or reestablished, and (2) to at least 2 of the witness monuments shown on the drawing in (d), above.

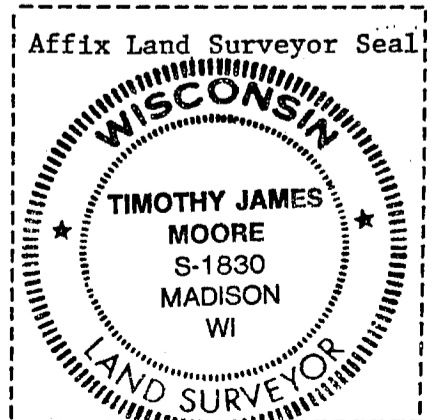
(f) Was the corner restored through acceptance of (1) an obliterated evidence location, or, (2) a found perpetuated location?

(g&h) Was the corner reestablished through lost corner proportionate methods? If so, show the method, including the directions and distances to other public land survey corners used as evidence or used for proportioning in determining the corner location?

Yes. In using single proportionate measurement to set the corner I was also able to get a close agreement between an existing north-south fence line and also the 1939 highway right-of-way plat for Division Job No. 9561.



(i) I, Timothy J. Moore
 (type or print name) certify that the corner location shown on this record was determined by me or under my direction and control and that this U.S. Public Land Survey Monument Record is correct and complete to the best of my knowledge and belief.



Timothy J. Moore
 Signature

10-19-87
 Date