

GRANT COUNTY CERTIFIED LAND CORNER

CORNER NUMBER 77

CERTIFICATE:

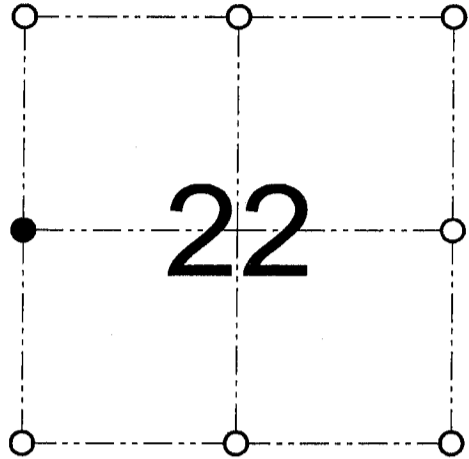
I, Larry L. Austin, do hereby certify that on the 8th day of January, 2001, I found evidence of the West 1/4 corner of Section 22, Town 6 North, Range 5 West, of the 4th Principal Meridian, and I re-established said corner according to the Wisconsin statutes as shown and described hereon.

Dated this 2nd day of February, 2001

Larry L. Austin
Larry L. Austin S-1903



SEAL



● = CORNER LOCATION

WEST 1/4 CORNER OF
SECTION 22, T 6 N R 5 W
TOWN OF PATCH GROVE

HISTORY OF ORIGINAL CORNER ESTABLISHMENT:

Corner was originally set in 1833 by Harvey Parke.
No other record of the corner was found.

DESCRIPTION OF CORNER EVIDENCE FOUND:

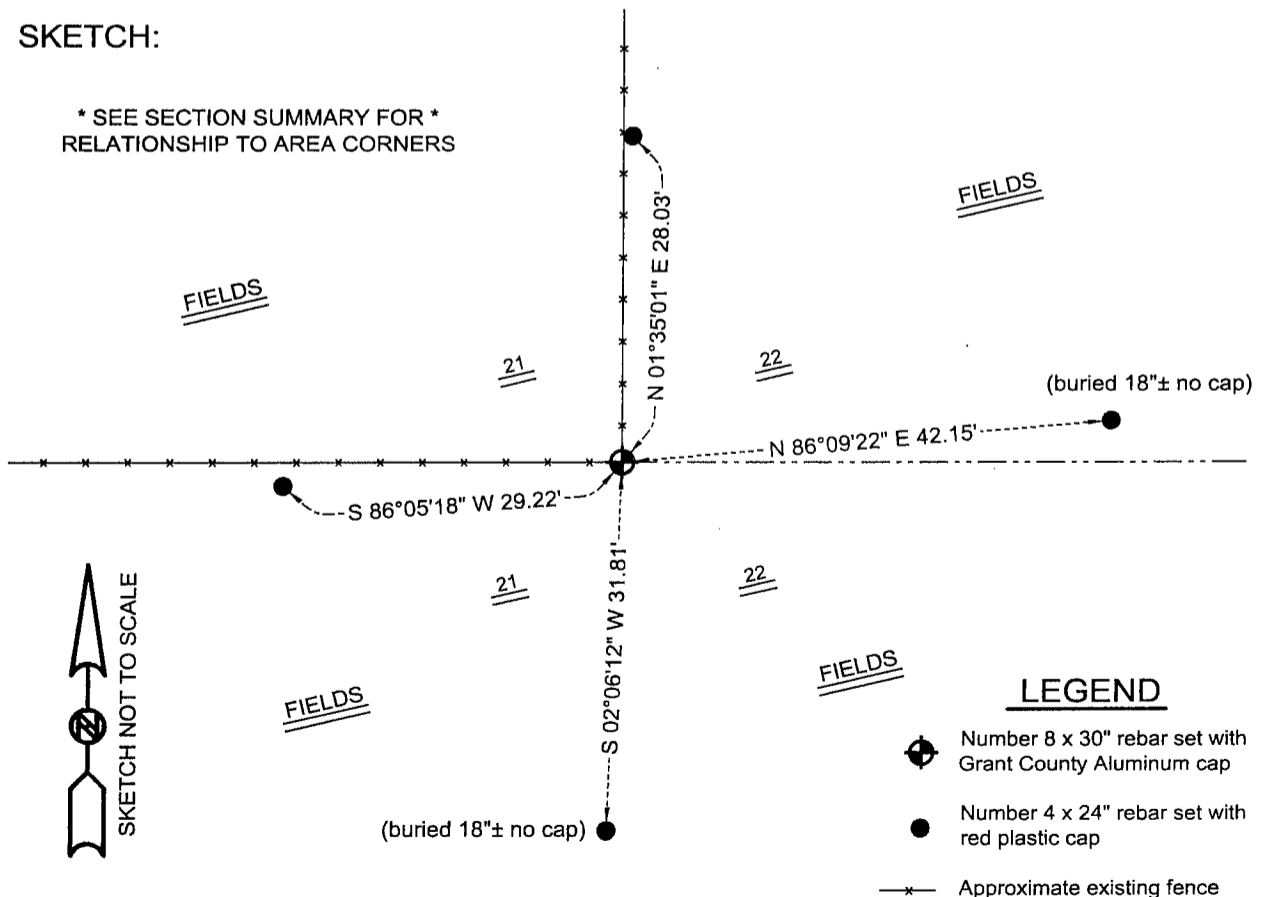
I found an occupied fence corner and accepted it's location after an EDM & GPS traverse of the area.

DESCRIPTION OF CORNER AND WITNESS MONUMENTS, references and accessories used to perpetuate the original or re-established location of this corner

WITNESS TO THE CORNER LOCATION: KELLY WOLF & SHELBY BLINDERT & BOBBY SEDGWICK

SKETCH:

* SEE SECTION SUMMARY FOR *
RELATIONSHIP TO AREA CORNERS



LEGEND

● Number 8 x 30" rebar set with Grant County Aluminum cap

● Number 4 x 24" rebar set with red plastic cap

—x— Approximate existing fence

AUSTIN ENGINEERING, LLC
4211 HWY 81 E, LANCASTER, WI 53813
PHONE 608-723-6363 FAX 608-723-6702

FIELDBOOK: SDR33, 9805
G:\T6NR5W\22
C:\SC14\SWA\TIE\T6NR5W\77

DRAWN BY: SW AUSTIN
APPROVED: LL AUSTIN
CREW: BS - SB - SA - TF