

65075

U.S. PUBLIC LAND SURVEY MONUMENT RECORD - GRANT COUNTY, WI

Section 19, Town 6 North Range 5 West, Town of Patch Grove (a)

NOTE: This form is intended and designed to fulfill all requirements of the Wisconsin Administrative Code Chapter A-E 7.08, U.S. Public Land Survey Monument Record (3) (a) (b) (c) (d) (e) (f) (g) (h) (i).

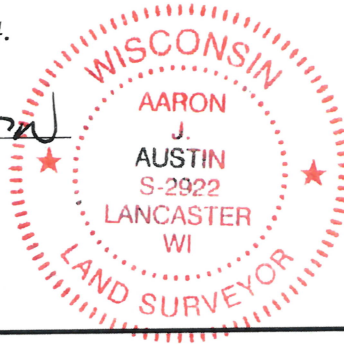
CERTIFICATE: (i)

I, Aaron J. Austin, Wisconsin Professional Land Surveyor, do hereby certify that the corner location on this record was determined by me and/or under my direct supervision and that this U.S. Public Land Survey Monument Record is correct and complete to the best of my knowledge and belief.

Dated this 6th day of May, 2024.

Aaron J. Austin

Aaron J. Austin, S-2922



● = CORNER LOCATION

Grant County Coordinates:
NAD 83 (2011)
Northing: 572,427.08
Easting: 740,734.30

HISTORY OF CORNER ESTABLISHMENT:

Original corner was set in 1833 by Harvey Parke.
Paul Brashaw set a 5/8" Rebar on a Survey filed in Book I, Page 187 dated 12-23-1984.

DESCRIPTION OF CORNER EVIDENCE FOUND: (b) (f) (g) (h)

I found no evidence of the 5/8" Rebar Brashaw set. I set a 1" x 24" Rebar from the Center of Section 19 doubled over through the Southwest 1/4, Southeast 1/4, Northeast of Section 19. I set four witness corners after I verified the Monument's location with G.P.S. and E.D.M. methods.

DESCRIPTION OF CORNER AND WITNESS MONUMENTS, references and accessories used to perpetuate the original or re-established location of this corner. (c) (d) (e)

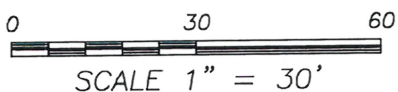
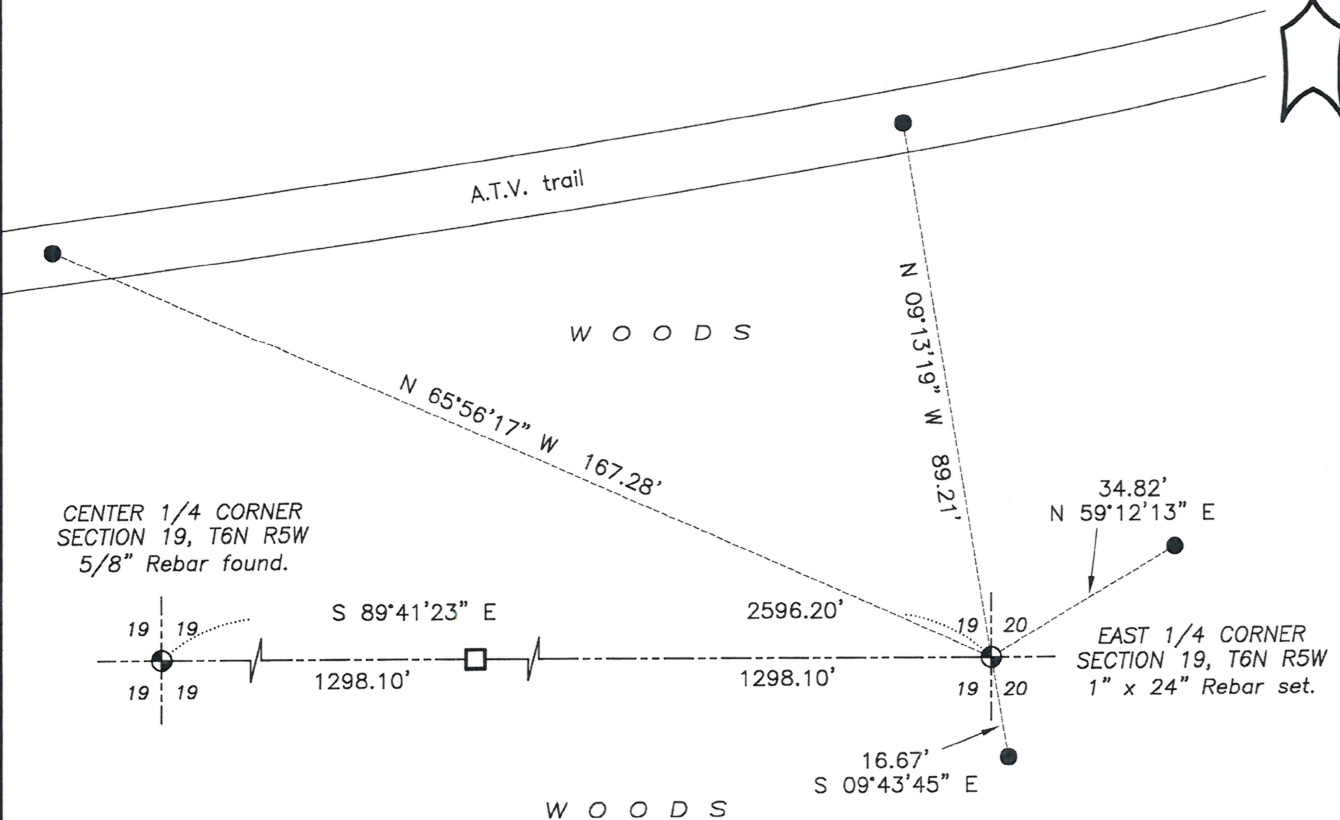
Witnesses to corner location Shane Austin, Owen Austin, Tanner Austin.
Drawn by: Owen Austin.

SKETCH:

LEGEND

- Section Corner—as designated
- 1" rebar found
- 3/4" x 18" rebar set

W O O D S



SCALE 1" = 30'

Job#23S257
H:\CRD\23S257
H:\TIE\T6NR5W\75