

65074

# U.S. PUBLIC LAND SURVEY MONUMENT RECORD - GRANT COUNTY, WI

Section 19, Town 6 North Range 5 West, Town of Patch Grove (a)

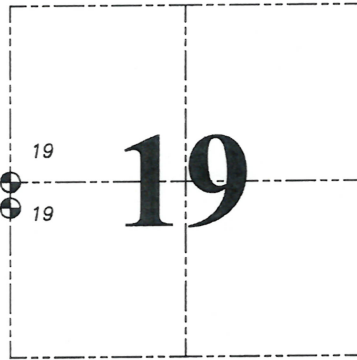
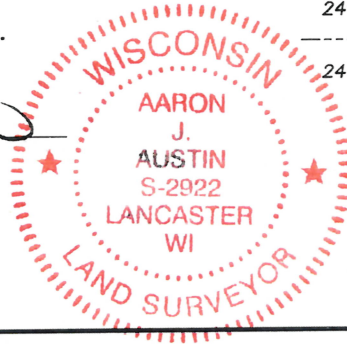
NOTE: This form is intended and designed to fulfill all requirements of the Wisconsin Administrative Code Chapter A-E 7.08, U.S. Public Land Survey Monument Record (3) (a) (b) (c) (d) (e) (f) (g) (h) (i).

**CERTIFICATE: (i)**

I, Aaron J. Austin, Wisconsin Professional Land Surveyor, do hereby certify that the corner location on this record was determined by me and/or under my direct supervision and that this U.S. Public Land Survey Monument Record is correct and complete to the best of my knowledge and belief.

Dated this 6th day of May, 2024.

Aaron J. Austin  
Aaron J. Austin, S-2922



⊕ = CORNER LOCATION

Grant County Coordinates:  
NAD 83 (2011)  
Northing: 572,473.46  
Easting: 735,424.31

HISTORY OF CORNER ESTABLISHMENT:

Corner was not set with the Original Government Survey.  
Michael Rochon set no monument on a Survey filed in Book 42, Page 39 dated 2-2-2018.

DESCRIPTION OF CORNER EVIDENCE FOUND: (b) (f) (g) (h)

I set a 1" x 24" Rebar online between the Northeast corner and East 1/4 of section 24 (T6NR6W) at the recorded offset of 14.52' (22 links). I established four witness corners after I verified the Monument's location with G.P.S. and E.D.M. methods.

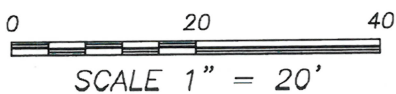
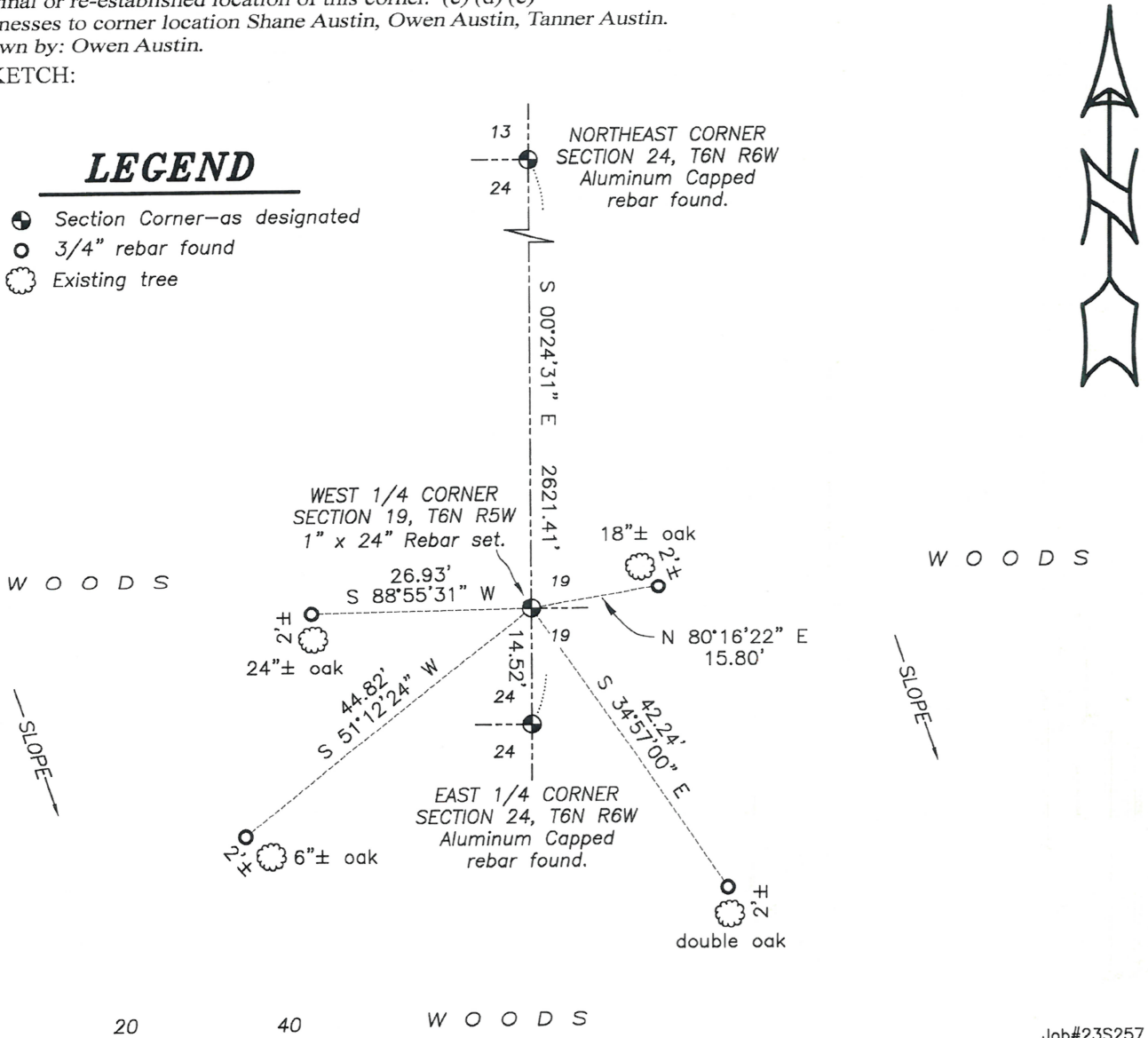
DESCRIPTION OF CORNER AND WITNESS MONUMENTS, references and accessories used to perpetuate the original or re-established location of this corner. (c) (d) (e)

Witnesses to corner location Shane Austin, Owen Austin, Tanner Austin.  
Drawn by: Owen Austin.

SKETCH:

## LEGEND

- ⊕ Section Corner—as designated
- 3/4" rebar found
- ⊙ Existing tree



Job#23S257  
H:\CRD\23S257  
H:\TIE\T6NR5W\74