

U.S. PUBLIC LAND SURVEY MONUMENT RECORD - GRANT COUNTY, WI

Section 19, Town 6 North Range 5 West, Town of Patch Grove (a)

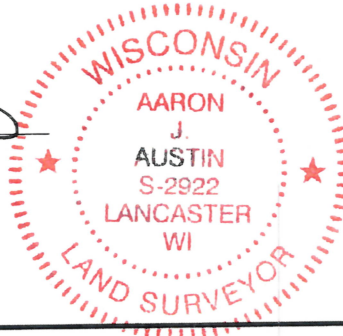
NOTE: This form is intended and designed to fulfill all requirements of the Wisconsin Administrative Code Chapter A-E 7.08, U.S. Public Land Survey Monument Record (3) (a) (b) (c) (d) (e) (f) (g) (h) (i).

CERTIFICATE: (i)

I, Aaron J. Austin, Wisconsin Professional Land Surveyor, do hereby certify that the corner location on this record was determined by me and/or under my direct supervision and that this U.S. Public Land Survey Monument Record is correct and complete to the best of my knowledge and belief.

Dated this 6th day of May, 2024.

Aaron J. Austin
Aaron J. Austin, S-2922



Grant County Coordinates:
NAD 83 (2011)
Northing: 575,017.32
Easting: 740,833.28

⊕ = CORNER LOCATION

HISTORY OF CORNER ESTABLISHMENT:

Original corner was set in 1833 by Harvey Parke.
Sean Walsh set a 5/8" Rebar and prepared a Survey Monument Record dated 2-28-1997.

DESCRIPTION OF CORNER EVIDENCE FOUND: (b) (f) (g) (h)

I found the 5/8" Rebar and one witness corner Walsh set. I set three additional witness corners after I verified the Monument's location with G.P.S. and E.D.M. methods.

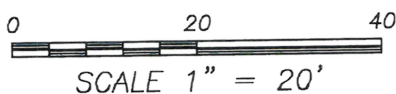
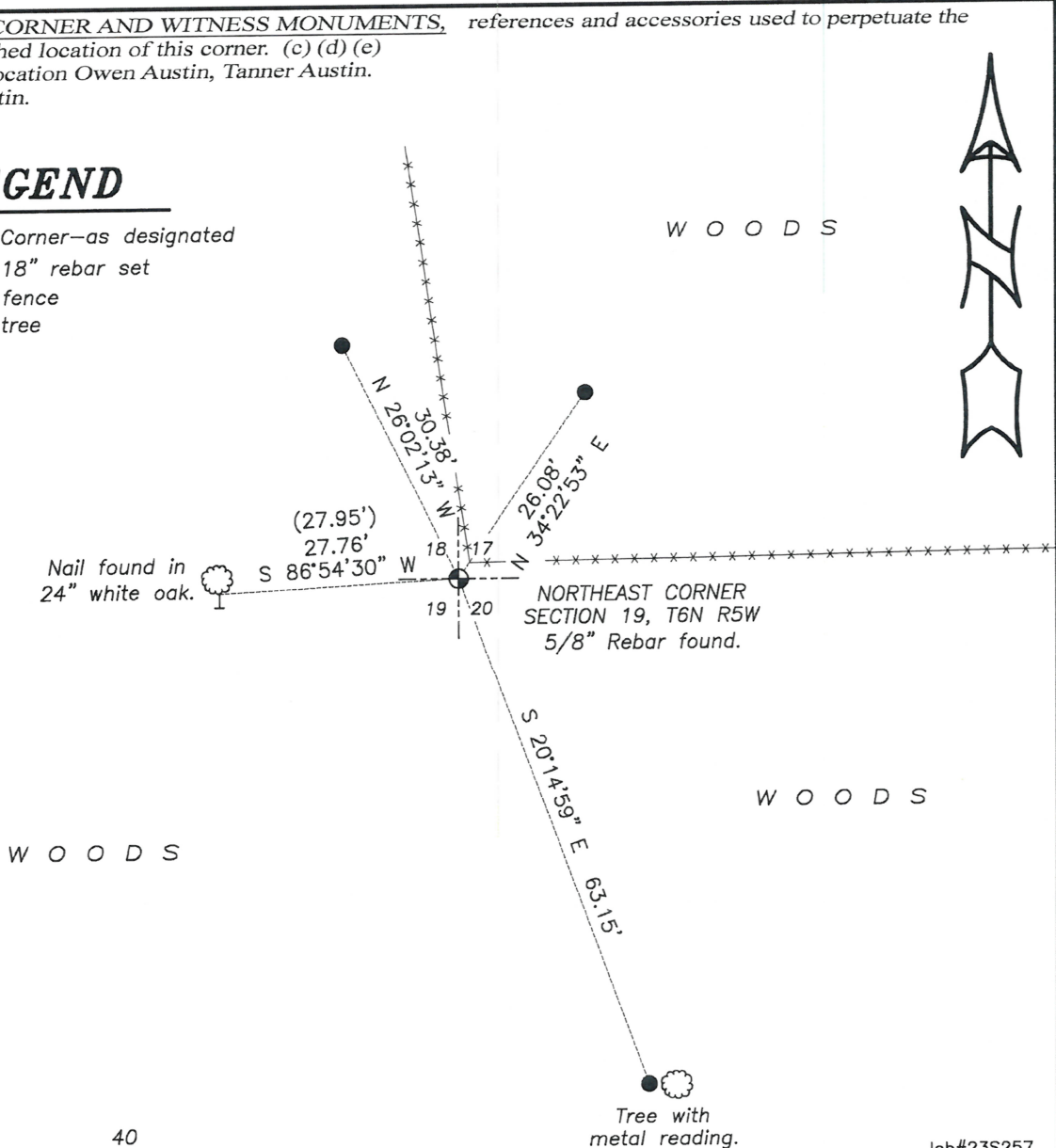
DESCRIPTION OF CORNER AND WITNESS MONUMENTS, references and accessories used to perpetuate the original or re-established location of this corner. (c) (d) (e)

Witnesses to corner location Owen Austin, Tanner Austin.
Drawn by: Owen Austin.

SKETCH:

LEGEND

- ⊕ Section Corner—as designated
- 3/4" x 18" rebar set
- x-x-x- Existing fence
- ☉ Existing tree



REC'D MAR 3 1997

71

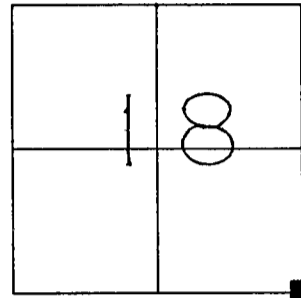
GRANT COUNTY U.S. PUBLIC LAND SURVEY MONUMENT RECORD

TYPE OF MONUMENT: 5/8" Diameter Iron Rod
TIES ARE AS INDICATED ON SKETCH

WITNESSES TO CORNER LOCATION

Sean M. Walsh

Christopher G. Reedy



CORNER LOCATION

Southeast Corner
Section 18
Town 6 North, Range 5 West
Millville Township

BASIS FOR MONUMENT LOCATION

In a 1984 survey of the North line of the Northeast One-Quarter of Section 19, T 6 N, R 5 W, Paul C. Brashaw re-established the Northeast Corner of Section 19 and monumented it with a "5/8" X 30" Rebar." A copy of this survey was found in Survey Record Book I, Page 187, Registry of Deeds, Grant County Courthouse.

The location of this monument fit well with my survey of the South One-Half of Section 18.

I have accepted and perpetuated this corner as shown hereon.

TIE SKETCH

■ - 5/8" Diameter Iron Rod at Corner

Tree ties are a 60d common pole spike set in a blaze at the base of the tree as indicated.

Tie distances were taped horizontally.

