

GRANT COUNTY CERTIFIED LAND CORNER

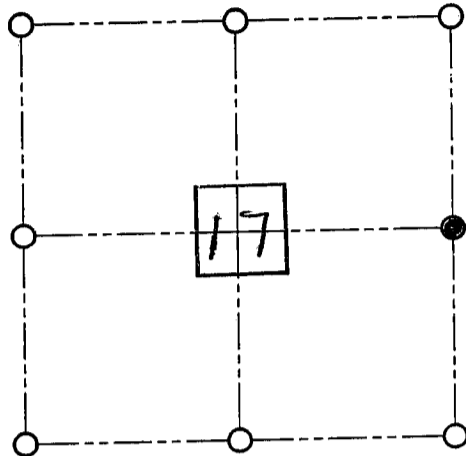
CERTIFICATE:

I, Bruce Lecka DO HEREBY CERTIFY THAT ON 8th DAY OF August, 1999, 2000 I FOUND EVIDENCE OF THE ~~1/4~~ 1/4 CORNER OF SECTION 17, TOWN 6 NORTH, RANGE 5 WEST, OF THE FOURTH PRINCIPAL MERIDIAN, AND I RE-ESTABLISHED SAID CORNER ACCORDING TO THE WISCONSIN STATUTES AS SHOWN AND DESCRIBED HEREON.

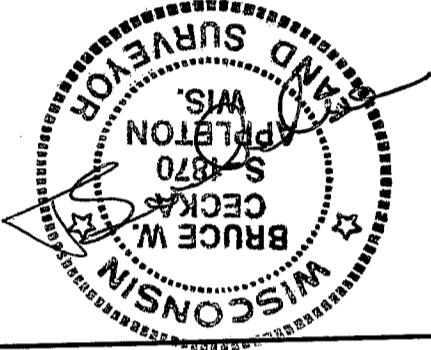
DATED THIS 8 DAY OF August, 2000

Bruce Lecka

CORNER NUMBER



● = CORNER LOCATION
1/4 CORNER OF SECTION 17, T 6 N R 5 W TOWN OF Millville



SEAL

HISTORY OF ORIGINAL CORNER ESTABLISHMENT:

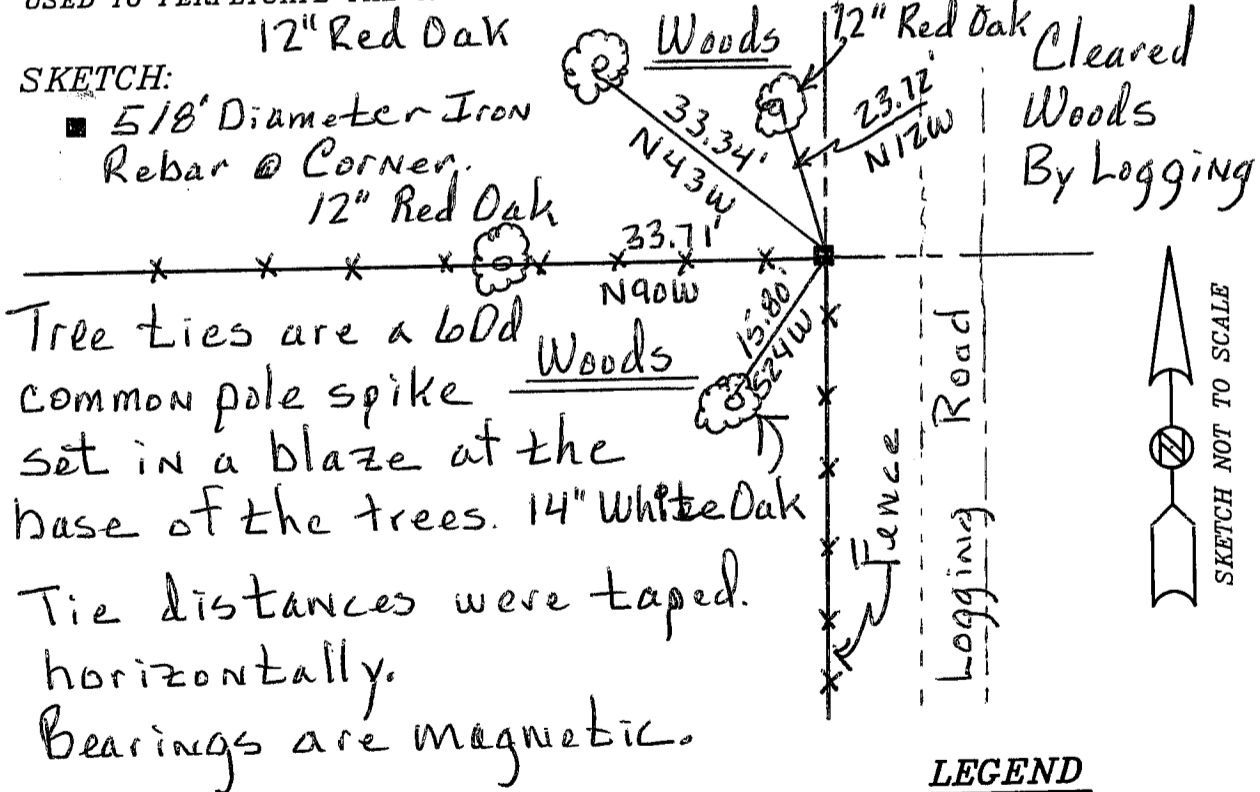
DESCRIPTION OF CORNER EVIDENCE FOUND:

I located the fence intersection and the location fit with the survey of Section 17

DESCRIPTION OF CORNER AND WITNESS MONUMENTS, REFERENCES AND ACCESSORIES USED TO PERPETUATE THE ORIGINAL OR RE-ESTABLISHED LOCATION OF THIS CORNER:

SKETCH:

- 5/8" Diameter Iron Rebar @ Corner.



Tree ties are a 6Dd common pole spike set in a blaze at the base of the trees. 14" White Oak Tie distances were taped horizontally. Bearings are magnetic.

LEGEND

- NUMBER 8 X 30" REBAR SET WITH GRANT COUNTY ALUMINUM CAP
- NUMBER 4 X 24" REBAR SET WITH RED PLASTIC CAP AND SIGN
- * * * EXISTING FENCE LOCATION
- ◇ "D.O.T. SURVEY MARKER NEARBY" SIGN SET

SKETCH NOT TO SCALE