

65054

U.S. PUBLIC LAND SURVEY MONUMENT RECORD - GRANT COUNTY, WI

Section 18, Town 6 North Range 5 West, Town of Millville (a)

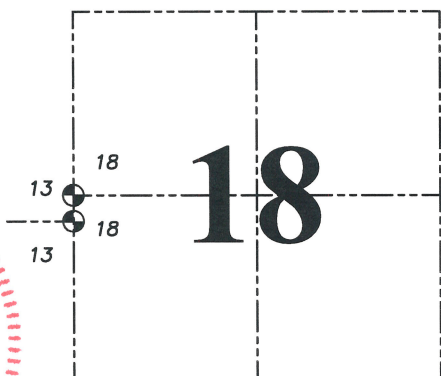
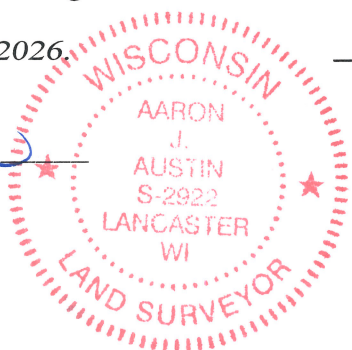
NOTE: This form is intended and designed to fulfill all requirements of the Wisconsin Administrative Code Chapter A-E 7.08, U.S. Public Land Survey Monument Record (3) (a) (b) (c) (d) (e) (f) (g) (h) (i).

CERTIFICATE: (i)

I, Aaron J. Austin, Wisconsin Professional Land Surveyor, do hereby certify that the corner location on this record was determined by me and/or under my direct supervision and that this U.S. Public Land Survey Monument Record is correct and complete to the best of my knowledge and belief.

Dated this 11th day of March, 2026.

Aaron J. Austin
Aaron J. Austin, PLS-2922



⊕ = CORNER LOCATION

Grant County Coordinates:
NAD 83 (2011)
Northing: 577,759.95
Easting: 735,377.56

HISTORY OF CORNER ESTABLISHMENT:

Corner was not set with the Original Government Survey.
Richard Marks set a 3/4" Rebar and prepared a Survey Monument Record dated 5-30-1991.

DESCRIPTION OF CORNER EVIDENCE FOUND: (b) (f) (g) (h)

Richard Marks originally tied this Corner out as the East 1/4 Corner of Section 13. Based upon the physical evidence and a previous survey filed in Book Y, Page 27, the 3/4" Rebar was accepted as the West 1/4 Corner of Section 18 T6N R5W. I set four witness corners and verified the Monument's location with G.P.S. and E.D.M. methods.

DESCRIPTION OF CORNER AND WITNESS MONUMENTS, references and accessories used to perpetuate the original or re-established location of this corner. (c) (d) (e)

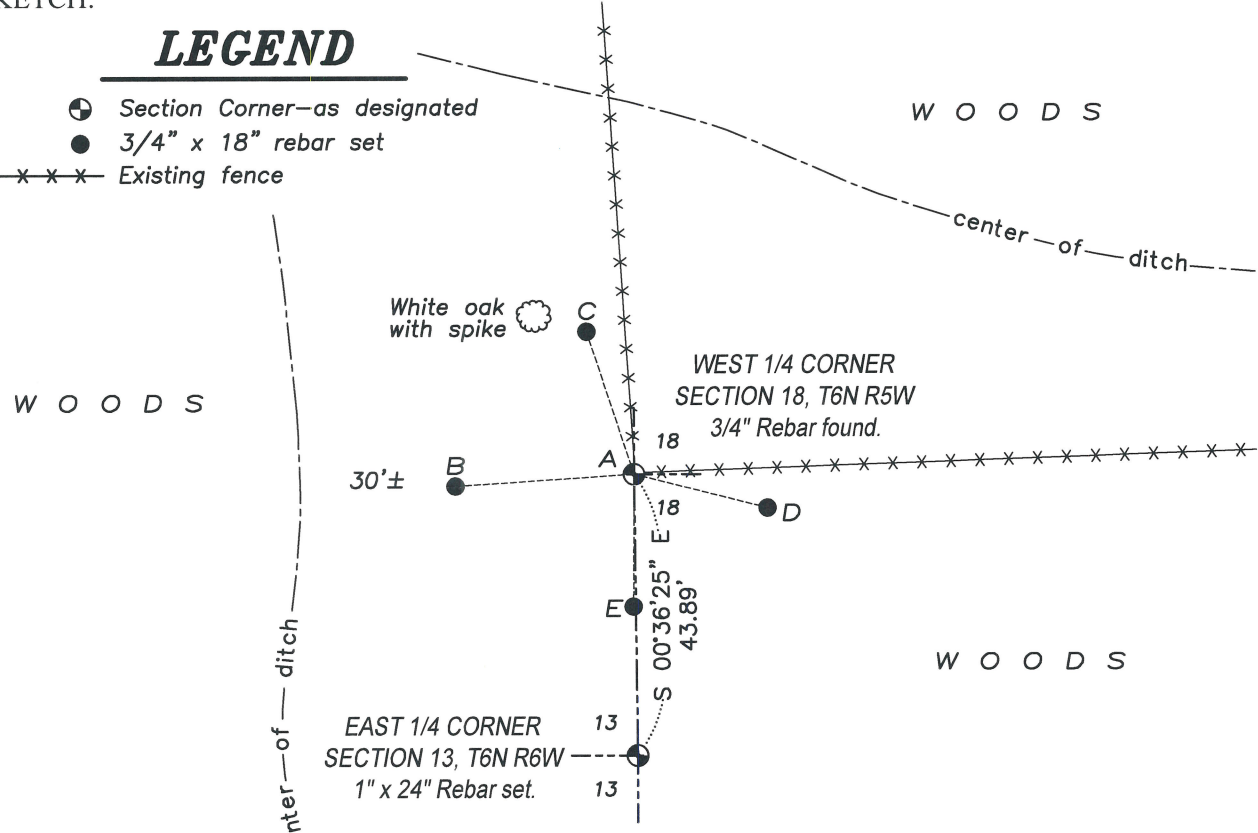
Witnesses to corner location Owen Austin, Tanner Austin.

Drawn by: Owen Austin.

SKETCH:

LEGEND

- ⊕ Section Corner—as designated
- 3/4" x 18" rebar set
- x-x-x- Existing fence



LINE	BEARING	DISTANCE
A-B	S 86°10'22" W	27.94'
A-C	N 18°15'22" W	23.28'
A-D	S 75°52'40" E	21.48'
A-E	S 00°22'13" W	20.60'

0 30 60
SCALE 1" = 30'

Job#24S238
H:\CRD\24S238
H:\TIE\T6NR6W\60

T6NR5W/54