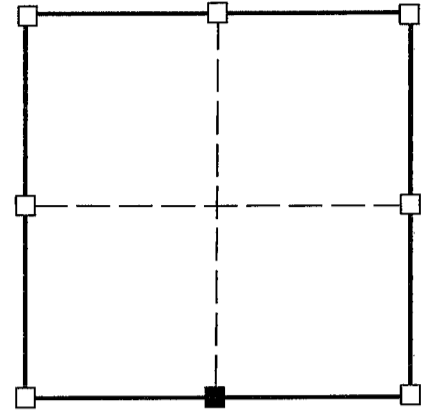
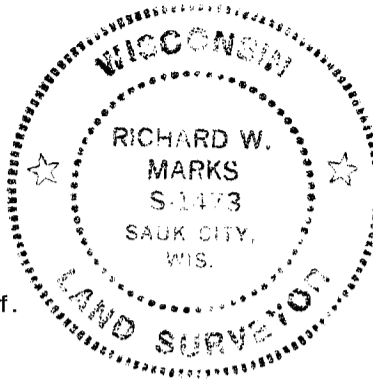


U.S. PUBLIC LAND SURVEY MONUMENT RECORD - GRANT COUNTY, WI

(a) Corner location:

Township 6 North
 Range 5 West
 Town of MILLVILLE

I, Richard Marks certify that the corner location on this record was determined by me and that this U.S. public land survey monument record is correct and complete to the best of my knowledge and belief.



■ = corner location
 Section 8



Dated this 27th day of May, 2000

[Signature]
 Richard Marks R.L.S. # S-1473

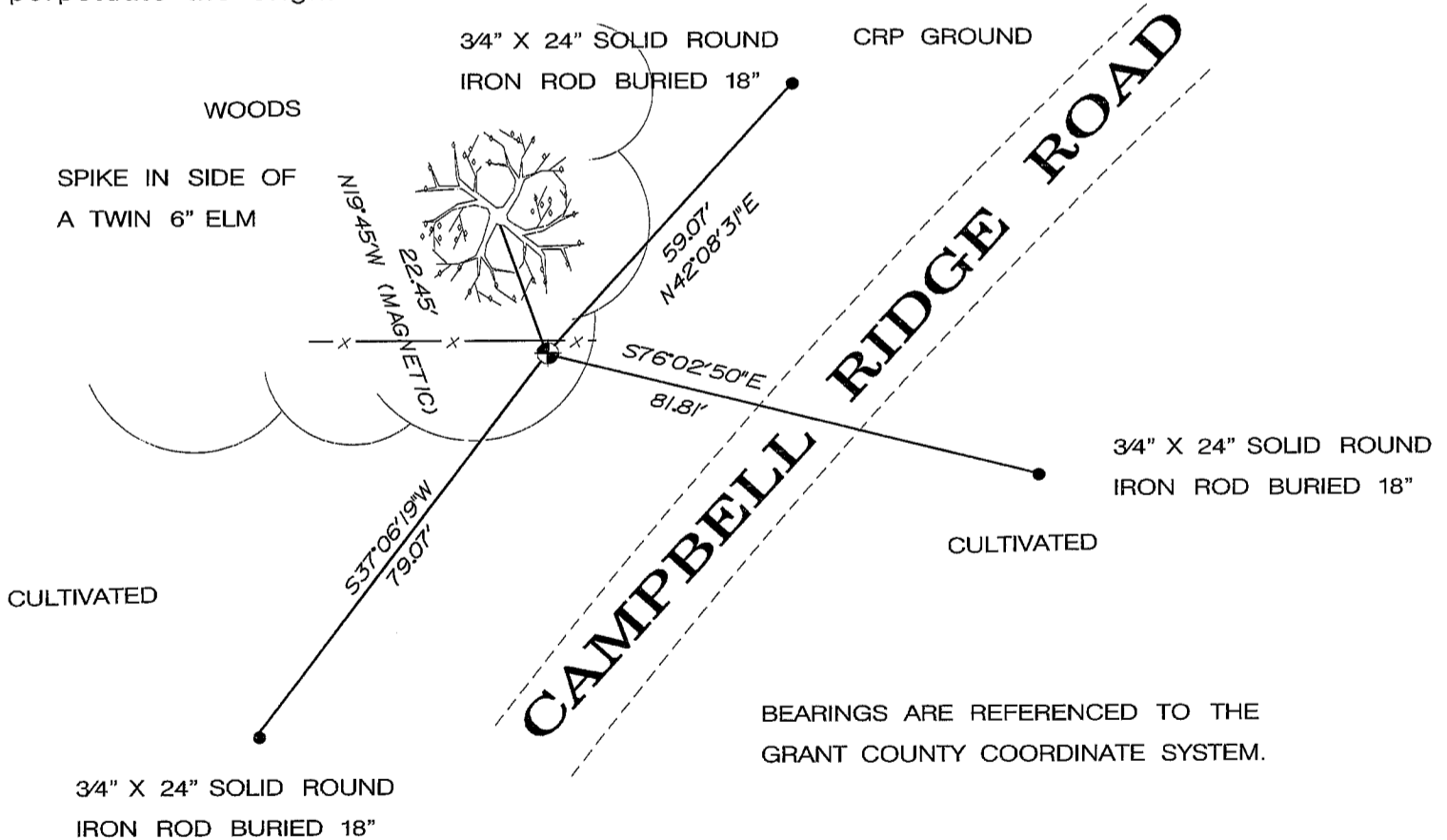
History of corner establishment:

Original survey was done by Robert Clark in 1832. Robert Lampman shows a 3" iron pipe set by him on Grant County certified survey map 210 which he prepared for Robert Douglas on 11/1/1983. I did not find a corner form on record for this corner.

Description of corner evidence found:

I found the 3" iron pipe set by Lampman and set a 1" iron rod with a Grant County aluminum cap.

Description of corner and witness monuments, references and accessories used to perpetuate the original or re-established location of this corner.



Control: COMBINATION OF GPS AND CONVENTIONAL FIELD CONTROL

Datum: WHP NETWORK		County coordinates		State plane coordinates (1983 NAD)	
Lat.		North	N 580424.29755	North	
Long.		East	E 743461.36376	East	