

APR 17 1997

RECEIVED

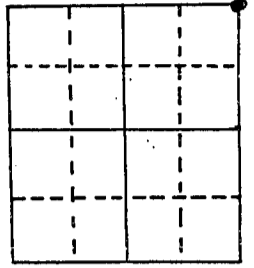
SEP 1 1994

47

U.S. PUBLIC LAND SURVEY MONUMENT RECORD

Note: This form is intended and designed to fulfill all requirements of Wisconsin Administrative Code, Chapter A-E 5.02, U.S. Public Land Survey Monument Record (3) (a) (b) (c) (d) (e) (f) (g) (h) (i). An additional sheet may be added if necessary to conform with said requirements.

(a) Corner location: Township 6 North
Range 5 East/West
Town/City/Village Millville Township
County Grant



Section 16

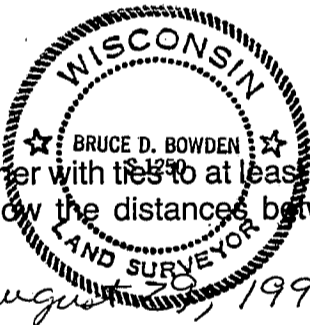
(b) (f) (g) (h) Description of monument found at this corner and if it was accepted, state all evidence (material, testimonial, occupational, plats, records, other monuments) used as a basis for accepting. If not accepted or if nothing was found, state evidence used as basis for establishing location. If reestablished through lost corner proportionate methods, indicate all monuments, distances and directions used to establish.

Found remains of original bearing tree (W. Oak 18" N.49W. 1.49 Chains) 98.34'

I FOUND THE MONUMENT AND ALL FOUR TIES.

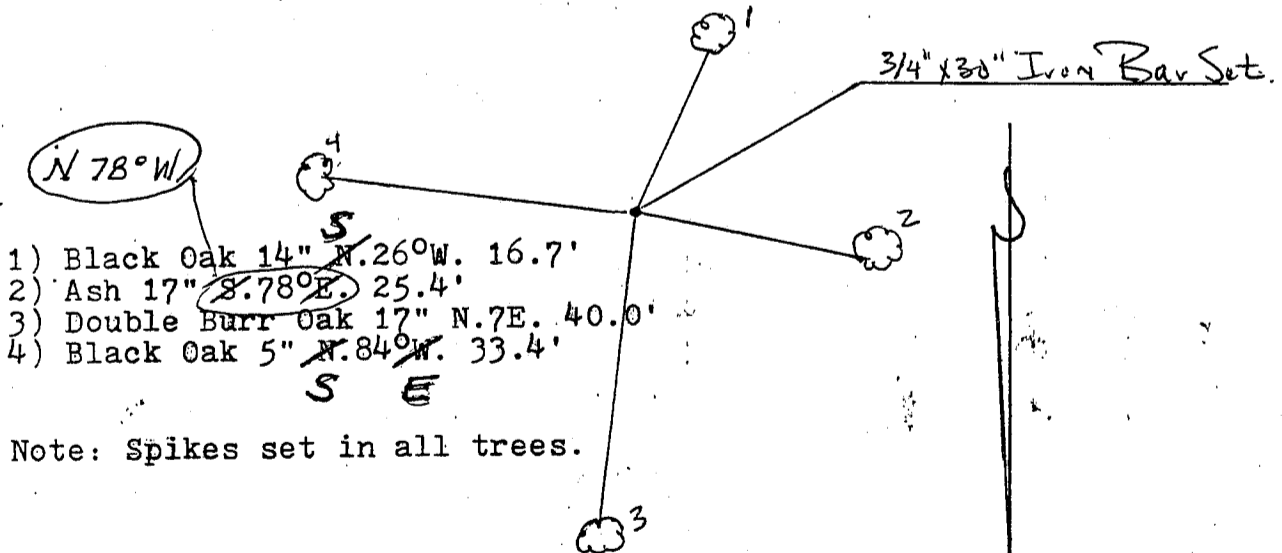
PLEASE NOTE THE VARIATION IN DIRECTION FROM THE MONUMENT TO THE TIES.

Bruce D. Bowden
BRUCE D. BOWDEN
R.L.S. - 1250



(c) (d) (e) Plan view of corner with ties to at least 4 witness monuments. If in disagreement with previously established corner, show the distances between the two corners and also indicate the ties to the disputed corner.

August 28, 1994



Note: Spikes set in all trees.

(i) I, Bruce W. Cecka
(type or print name) certify that the corner location on this record was determined by me or under my direction and control and that this U.S. Public Land Survey Monument Record is correct and complete to the best of my knowledge and belief.

Affix seal here

Bruce W. Cecka
Signature

4-13-87
Date

APR 17 1987

RECEIVED

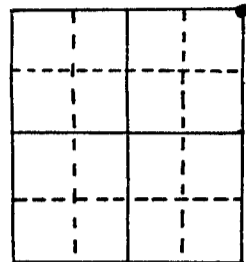
U.S. PUBLIC LAND SURVEY MONUMENT RECORD

Note: This form is intended and designed to fulfill all requirements of Wisconsin Administrative Code, Chapter A-E 5.02, U.S. Public Land Survey Monument Record (3) (a) (b) (c) (d) (e) (f) (g) (h) (i). An additional sheet may be added if necessary to conform with said requirements.

(a) Corner location: Township 6 North
Range 5 East/West

Town/City/Village Millville Township

County Grant

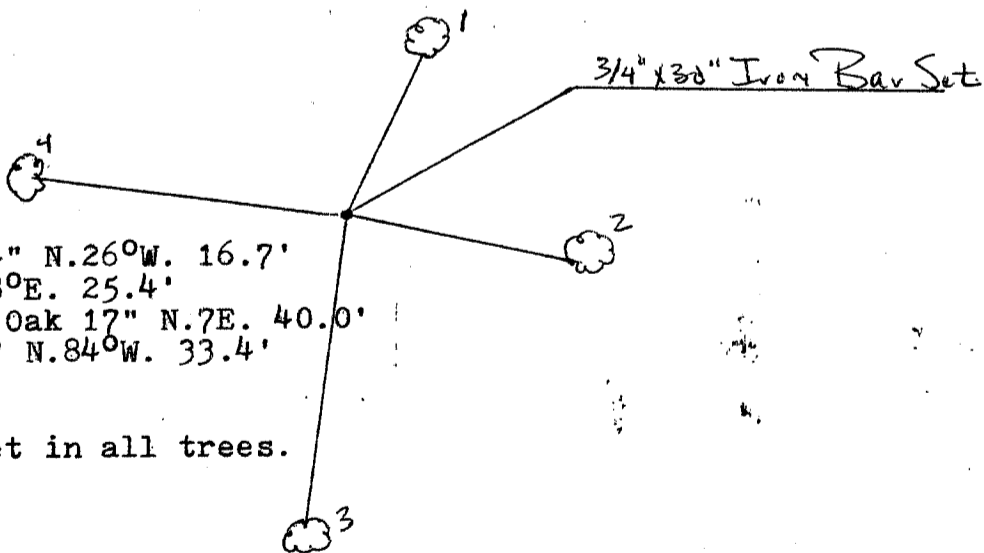


Section 16

(b) (f) (g) (h) Description of monument found at this corner and if it was accepted, state all evidence (material, testimonial, occupational, plats, records, other monuments) used as a basis for accepting. If not accepted or if nothing was found, state evidence used as basis for establishing location. If reestablished through lost corner proportionate methods, indicate all monuments, distances and directions used to establish.

Found remains of original bearing tree (W. Oak 18" N.49W. 1.49 Chains)
98.34'

(c) (d) (e) Plan view of corner with ties to at least 4 witness monuments. If in disagreement with previously established corner, show the distances between the two corners and also indicate the ties to the disputed corner.



(i) I, Bruce W. Cecka
(type or print name) certify that the corner location on this record was determined by me or under my direction and control and that this U.S. Public Land Survey Monument Record is correct and complete to the best of my knowledge and belief.

Affix seal here

Bruce W. Cecka 4-13-87
Signature Date

P. 47