

# U.S PUBLIC LAND SURVEY MONUMENT RECORD - GRANT COUNTY, WISCONSIN

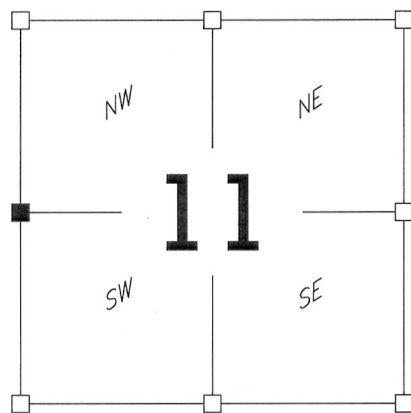
Section 11, Town 6 North, Range 5 West, Town of Millville

## Certificate

I, Stanley J. King, do hereby certify that the corner location on this record was determined by me and/ or under my direct supervision and that this U.S Public land survey monument record is correct and complete to the best of my knowledge and belief.

Dated this 27th day of March, 2012

  
Stanley J. King - Registered Land Surveyor S-2001



■ = Corner Location Set

## Seal:



## HISTORY OF CORNER ESTABLISHMENT:

Corner was originally set in the year 1833 by Harvey Parke  
No other record of the corner was found.  
Division of Section

## CORNER OF CORNER EVIDENCE FOUND:

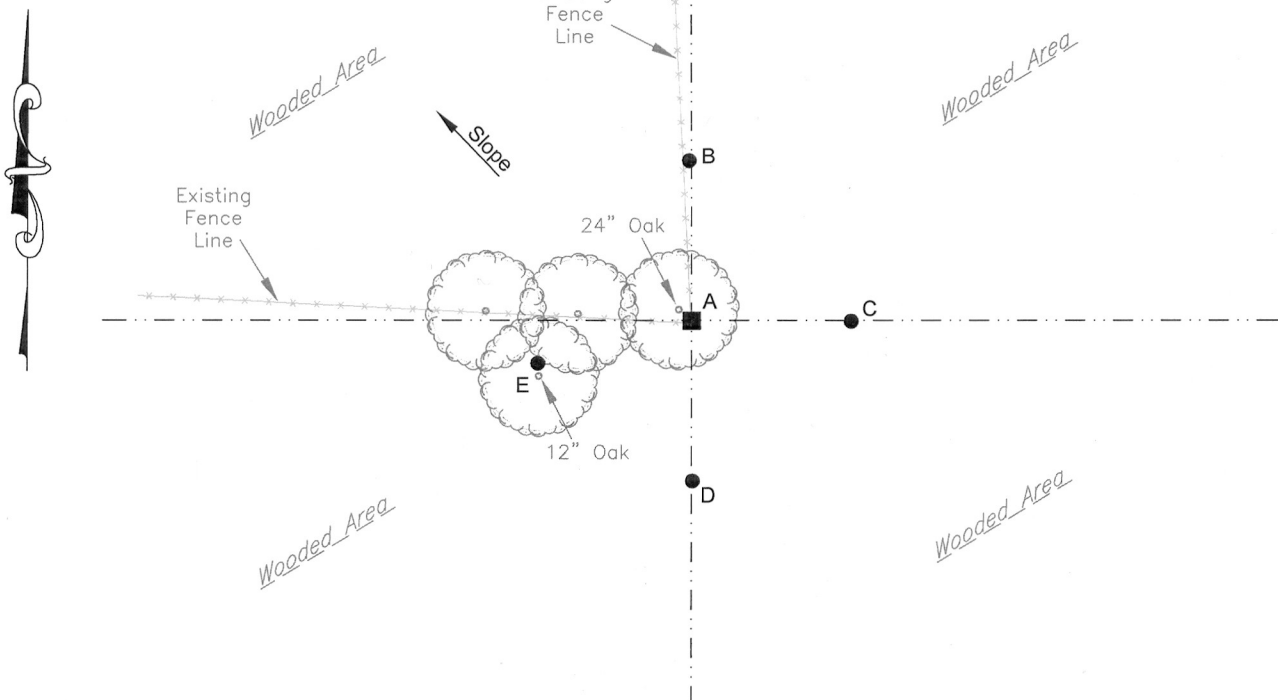
Found no evidence of the corner or its witness - I reset the corner at an existing occupied fence corner. The location fits adjoining corners well. Its loc was established using GPS and EDM Methods.

## DESCRIPTION OF CORNER AND WITNESS MONUMENTS,

references and accessories used to perpetuate the original or re-established location of this corner.  
Witnesses to the corner location Stan King, Craig Jentz, and Brad Digman.

## Location Diagram:

SCALE: 1" = 30'



### Tie Bar Table

Line:	Distance (Notes):
A-B	25.00' (1' East of North Running Fence Line)
A-C	25.00' (East)
A-D	25.00' (South)
A-E	25.00' (7.5' South of West Running Fence Line)

### Legend

- Corner Location Set (10x30" Rebar 5)
- Tie Bar Locations -  
Set No. 6 x 18" rebar - wt = 1.50 #
- Section Line/ 40 Line



**DELTA 3 ENGINEERING**  
INC

Professional Civil-Municipal & Structural Engineering  
Grant Writing Land Development Planning & CADD Services  
875 South Chestnut Street Phone: (608) 348-5355  
Platteville, Wisconsin 53818 Fax: (608) 348-5455

DATE:  
DRAWN BY: C.Coyier  
APPROVED: S.King  
SURVEY CREW: CLJ,BMD,SJK  
Data: G:\Projects\2011\D11-063\CAD\Project\_Milville.dwg  
Drawing: G:\Projects\2011\D11-063\Plat\Survey Tie Sheet.dwg

Grant County Corner Number 38

20605102000